

CATALOGUE

US version 2011 -2012



SIMPLIFYING YOUR WORKING LIFE

Backed by over 50 years of experience in dental medicine, Bien-Air offers a range of solutions and products renowned throughout the world for their excellence. 100% Swiss Made, Bien-Air products are designed and manufactured in the heart of the famous "Watch Valley", the birthplace of a unique expertise in the field of microtechnology. Famous for its implantology systems and its handpieces, Bien-Air is also the world's largest producer of superior quality micromotors for dental medicine.

Our products have been developed as a direct response to the day-to-day work of professionals practising in the dental and surgical fields. The constant innovations emerging from this close collaboration greatly improve the quality, fluidity and safety of dental treatments and surgical procedures. Our customers testify daily to the high quality, reliability and precision of our products. They are made to simplify your working life... Over the long-term.





EFFICIENT AND PROFITABLE SOLUTIONS

With Bien-Air, it has never been so easy to design and machine superior quality prostheses in your laboratory. Thanks to an obsession with simplicity and reliability, the specialists at Bien-Air Laboratory have developed a CAD-CAM system able to meet the very highest requirements. The Bien-Air CAD-CAM system pushes the limits of precision, ease of use and profitability even further.

CAD-CAM



Quality prosthetics also mean quality materials. This is why Bien-Air Laboratory provides you with thirteen renowned prosthetic materials, covering all the needs of a modern dental laboratory.





CAD-CAM SOLUTIONS TO MEET YOUR EVERY NEED

The Bien-Air Cad-Cam system is composed of a scanner (Scan200/D710), a prosthetic design software package, Dental Designer CAD, machining programme software (CAM) and a CNC milling machine (Mill200 or Mill300). The whole system is controlled by a computer. This open system makes it possible to use standard STL files. You can thus receive and exchange files on incomplete or finished prostheses with your partners. Exceptional quality materials, faster machining, unrivalled ease of use, uniquely versatile, future proof software, results which meet the most stringent requirements: all these reasons have earned Bien-Air its worldwide reputation. You can't go wrong.



Advantages of the Bien-Air CAD-CAM system:

- Easy to use
- Top quality results
- Versatile
- Quick machining
- Wide selection of prosthetic materials
- Compact design perfect for laboratories
- Upgradable software
- Open system (STL)



Materials	Mill200	Mill300
DC-Zirkon		•
DC-Zirkon col.		•
DC-Shrink	•	•
DC-Shrink +	•	•
DC-Leolux		•
DC-Procura		•
DC-Cristall		•
DC-Cream		•
DC-Titan	•	•
DC-Croco	•	•
DC-Tell	•	•
DC-Cast	•	•
DC-Temp	•	•
DC-Comp	•	•

SCAN200/D710



To obtain a quality prosthesis, you have to start with a good quality scan of the impression. The Scan200/D710 offers you the best in industrial technology right from the start of the process, and is very easy to use. It is able to scan up to 16 elements at a time, with the same guaranteed precision, whether using a negative impression or a cast.

The 3D images this produces are incredibly detailed and sharp, with no gaps or dead zones. The scanning programme itself is a user-friendly model of versatility. It offers the widest range of preset indications for the most diverse scanning applications. Its multi-die function allows you to achieve an unrivalled level of efficiency.

Scan200/D710 specifications:

- Scanning duration:
 - single impression: 25-30 s
 - 3-unit bridge: 100-125 s
 - complete cast: 60-75 s
- Accuracy: above 20 microns, excellent accuracy for 16-unit bridges
- Colour of the scanned material: any
- External dimensions in cm: L 34 x H 29 x D 33
- Scanning multi-dies: scanning in batches for the treatment of one or several cases
- Two cameras and plate with three axes

**Bien-Air Scan200/D710 CAD**

Set comprising CAD software, PC, keyboard, mouse

Ref. 1700288-001

Bien-Air Mill200 CAD-CAM system

Set including:

Bien-Air Scan200/D710 including CAD ref. 1700288-001

Bien-Air Mill200 including CAM ref. 1700290-001

Training and installation

Ref. 1700283-001

Bien-Air Mill300 CAD-CAM system

Set including:

Bien-Air Scan200/D710 including CAD ref. 1700288-001

Bien-Air Mill300 including CAM ref. 1700324-001

Training and installation

Ref. 1700323-001

MILL200 TECHNOLOGY AND INGENUITY COMBINED



An exemplary combination of technology and ingenuity, this machining centre is entirely designed and manufactured in Switzerland, the home of the highest quality machine tools.

With ball screw spindles connected to the axis motors, the machine offers extraordinary precision in repeated positioning. The ultra-stable cast iron structure of the Mill200 absorbs all vibrations. The vertically positioned vice for holding materials allows rapid downward evacuation of chips and dust. The linear movements are ensured by high precision recirculating ball slide rails, which guarantee a longer service life. Quality is never left to chance!

Mill200 specifications:

- Effective machine volume: blanks Ø 90 mm x d 20 mm
- Spindles: 2 x Ø 38 mm
- Clamp: ER16, Ø 10 mm max.
- Motor speed: 300-25,000 rpm, 0.45 kW
- Liquid cooled
- Automatic measurement of tool length
- Travel X: 255 mm, Y: 150 mm, Z: 100 mm
- Rapid feed 10 m/min
- Minimum resolution of 1 micron
- Pneumatic turning of material over 180°
- Integrated computerised numerical control
- Electronic knob controlling movement of the linear axes, resolution 1 micron
- ISO language programming
- SD card reader for loading and storing programmes
- Electrical connection: 230 V/50 Hz
- Pneumatic connection: 5 bars
- Dimensions (LHD)/weight: 800 x 700 x 800 mm/170 kg

**Bien-Air Mill200 including CAM software**

Set comprising 2 additional chucks, CAM software, plus blocks of the following materials: 1 DC-Shrink®, 5 DC-Tell®, 1 DC-Titan®, 1 DC-Cast®, 1 set DC-Liner, 1 DC-Cor red, 1 DC-Cor white, 1 set of burs, 1x coolant liquid plus training and installation

Ref. 1700290-001

Bien-Air Mill200 without CAM software

Additional machining centre on the same site:
2 additional chucks, 1 set of burs, 1x coolant liquid plus installation

Ref. 1600627-001

Bien-Air Mill200 CAD-CAM system

Set including:

Bien-Air Scan200/D710 including CAD

ref. 1700288-001

Bien-Air Mill200 including CAM

ref. 1700290-001

Training and installation

Ref. 1700283-001

MILL300 THE NEW BENCHMARK



It is now possible to machine zirconium oxide HIP (1200 HV) in complete autonomy. Mill300 is a revolutionary dental machining centre. It is able to machine the most comprehensive range of materials, from polymer resin to chrome cobalt to Zirkon HIP. No less than 13 materials are available for you to use. The Mill300 produces extremely accurate results, largely thanks to its high frequency spindle controlled by a motor which runs at up to 60,000 rpm. The Mill300 has an automatic bur changer which has 8 positions that can be allocated at will to meet your needs. The machine will automatically change burs depending on the material used, the machining step (blank, finishing, front/back) and the bur wear (automatic replacement). This makes it possible to programme non-stop sequences of work. The Mill300 offers you not only an incomparable machining quality, but also a level of flexibility and productivity never before seen in the world of dental CAM.

Mill300 specifications:

- Machining volume in mm: 100 (X) x 100 (Y) x 20 (Z)
- Detection of the material by RFID
- Axes:
 - 3 simultaneous axes with automatic bur changer for 8 burs
 - axis B flipper for positioning the material
 - high precision linear axes X=255 mm, Y=150 mm, Z=100 mm,
- Feed: rapid 10 m/min, minimum resolution of 0.001mm
- Bur: Automatic measurement of bur length
- Spindle:
 - 1 high frequency spindle, 300-60,000 rpm
 - separate coolant liquid and lubricant
 - power 1.6 kW
 - type of chuck HSK 25. Max diameter of the bur=5 mm
- Control device:
 - built-in numeric control system
 - ISO language programming
 - SD card for loading and storing programmes
 - PC communication: RS232
- Pump: coolant liquid 21 l/min. Power 0.25 kW
- Coolant liquid reservoir: 25 litres, built-in
- Electric power supply: 230 V/50 Hz
- Pneumatic supply: 5 bar. 120 l/min
- Dimensions:
 - width: 1050 mm, height: 1400 mm, depth: 730 mm
 - weight: 450 kg
 - CE conformity
- Body: cast iron structure offering optimal absorption of vibrations

**Bien-Air Mill300 including CAM software**

Set comprising 2 additional chucks, CAM software, plus blocks of the following materials: 1 DC-Shrink®, 5 DC-Tell®, 1 DC-Titan®, 1 DC-Cast®, 1 set DC-Liner, 1 DC-Cor red, 1 DC-Cor white. Plus 1 set of tools, 1x coolant liquid plus training and installation

Ref. 1700324-001

Bien-Air Mill300 without CAM software

Additional machining centre on the same site:
2 additional chucks, 1 set of burs, 1x coolant liquid plus installation

Ref. 1600655-001

Bien-Air Mill300 CAD-CAM system

Set including:

Bien-Air Scan200/D710 including CAD

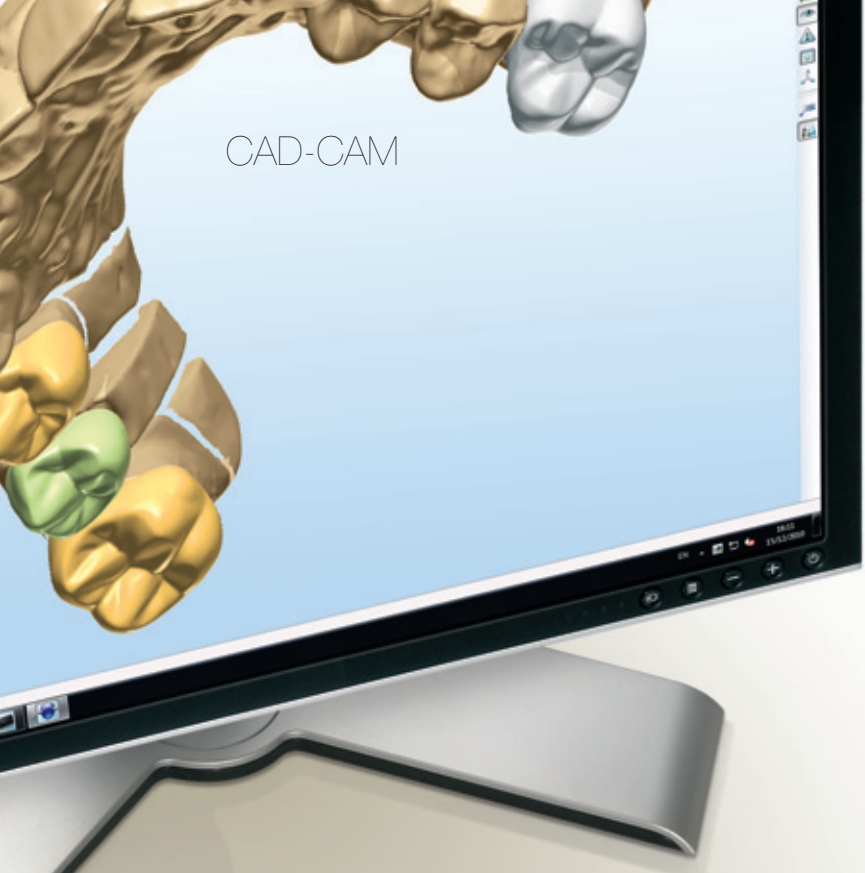
ref. 1700288-001

Bien-Air Mill300 including CAM

ref. 1700324-001

Training and installation

Ref. 1700323-001



CAD-CAM

DENTAL DESIGNER CAD

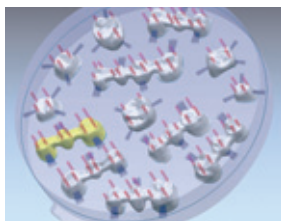
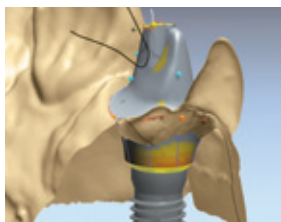
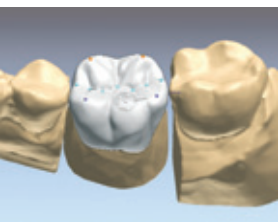
Designing anatomical models has never been so simple. Dental Designer is a new generation of prosthetic design software, so powerful it will astound you. It offers a wide range of functions, such as an articulation simulator (Smile Composer), design of complete anatomical models, but also models for inlays, onlays and veneers. It also allows abutments and partial removable models to be designed. It is very easy to start using, largely thanks to its comprehensive, intuitive interface which perfectly meets the requirements of the most demanding professional prosthesisists.

CAM

The fruit of 25 years of experience, the CAM software suite allows the CNC machine's programming and machining operations to be configured and controlled. This software is so simple to use that there is no need for any prior experience. The best machining strategies for each material are automatically suggested. Combining CAM with Mill200 and Mill300 machines provides truly exceptional results. The surface finish is of such a high quality that hand finishing work is not necessary.

Dental Designer CAD specifications:

- Creation of complete anatomical models
- Simultaneous creation of upper and lower jaw models
- Dynamic virtual articulation
- Inlays, onlays and veneers
- Pressed ceramic for complete digital restoration
- AbutmentDesigner (option)
- Implant bar attachments and sophisticated bridges
- Removable partial model (option)
- Scanning of the impression material (option)

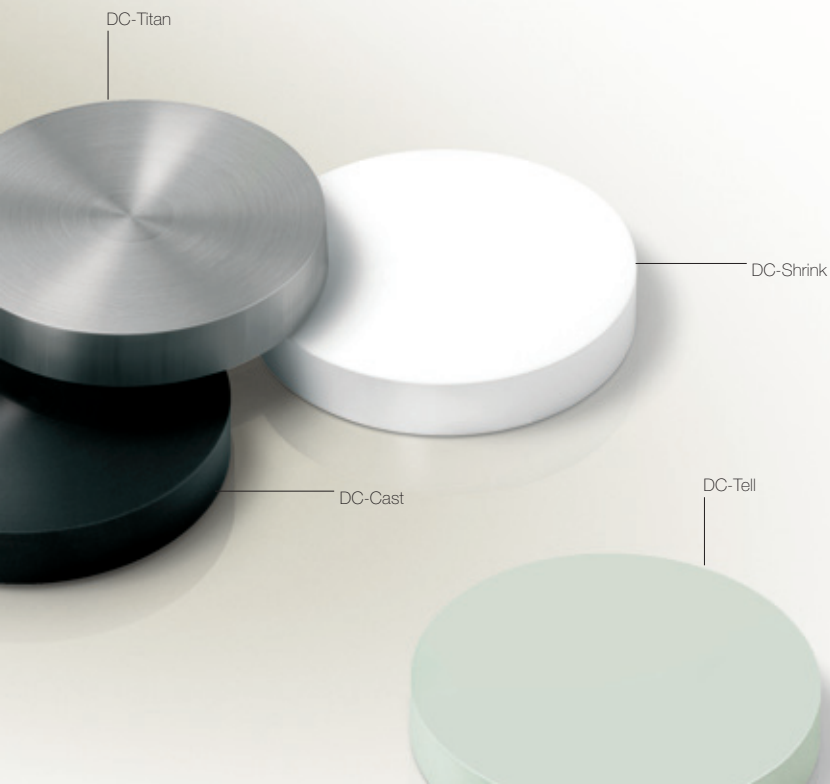
**CAM specifications:**

- Simple to use, graphic user interface
- Preset machine programs
- No CNC experience necessary
- Optimised use of material (nesting)
- No limit to number of elements
- Compensation for the shrinkage coefficient can be configured (thermal treatment)

PROSTHETIC MATERIALS A SOLUTION FOR YOUR EVERY NEED

Bien-Air Laboratory offers you a range of certified prosthetic materials recognised* for their top-level performance. Suitable for all requirements, the Bien-Air range offers you a broad range of solutions, from highly-affordable temporary materials to DC-Zirkon®, renowned for its aesthetic qualities and great strength.

To perfect this range, Bien-Air has collaborated with various universities and well-known international institutes. This has resulted in materials with a fine homogeneous structure. Their unique characteristics allow faster machining and provide exceptional quality.



The material **DC-Croco**[®] is a cobalt alloy of proven quality, industrially produced and used to make the frames of crowns and bridges.



As well as **DC-Zirkon**[®] and **DC-Zirkon**[®] col., absolute classics that were launched on the market in 1993 and are suitable for numerous indications (fully sintered zirconium), you have the choice of **DC-Shrink**[®] (densely sintered zirconium) and **DC-Leolux**[®] (fully sintered zirconium). Our range of "all ceramic" aluminium products, which includes **DC-Procura**[®], provides a practical response to all user requirements. This range also includes the vitro-ceramics **DC-Cristall**[®] and **DC-Cream**[®].



The **DC-Titan**[®] (single metal) is covered by the layer of bio-oxides. For non-precious alloys, we refer back to **DC-Croco**[®].

A "low cost" segment that is currently enjoying success: long-lasting temporary prostheses made from **DC-Tell**[®] reinforced with fibreglass and **DC-Cast**[®] designed for the "lost-wax" casting technique.



DC-Zirkon[®], due to its incomparable aesthetic properties and great strength, has become a real best-seller. These highly remarkable qualities are due to the enormous level of hot isostatic pressing (HIP) to which it is subjected. The technical perfection phase took place in collaboration with various universities and made it possible to reduce the implementation time and also to optimise the material. Its long machining time becomes relative since the heating phase (sintering) is not necessary. **DC-Zirkon**[®] offers essential advantages to demanding professionals.

* Prosthetic material blocks are class IIa medical devices according to European directive 93/42/CEE.

BLOCKS OF MATERIAL

Description Size in mm



DC-Zirkon® blocks

Zirconium oxide HIP (hot isostatic pressing)

Ref. 1501143-001	Ø 90 x 8
Ref. 1501144-001	Ø 90 x 10
Ref. 1501145-001	Ø 90 x 12
Ref. 1501146-001	Ø 90 x 13.5
Ref. 1501147-001	Ø 90 x 15
Ref. 1501279-001	Ø 90 x 20
Ref. 0410.00500	80 x 50 x 8
Ref. 0410.00501	80 x 50 x 10
Ref. 0410.00502	80 x 50 x 12
Ref. 0410.00503	80 x 50 x 13.5
Ref. 0410.00504	80 x 50 x 15



DC-Zirkon® col. blocks

Zirconium oxide HIP (coloured hot isostatic pressing)

Ref. 1501148-001	Ø 90 x 8
Ref. 1501149-001	Ø 90 x 10
Ref. 1501150-001	Ø 90 x 12
Ref. 1501151-001	Ø 90 x 13.5
Ref. 1501152-001	Ø 90 x 15
Ref. 1501280-001	Ø 90 x 20
Ref. 0410.00510	80 x 50 x 8
Ref. 0410.00511	80 x 50 x 10
Ref. 0410.00512	80 x 50 x 12
Ref. 0410.00513	80 x 50 x 13.5
Ref. 0410.00514	80 x 50 x 15



DC-Shrink® blocks

Recommended sintering furnaces: *Vita Zyrcomat, *Mihm-Vogt HT

Ref. 1501168-001	Ø 90 x 15
Ref. 1501169-001	Ø 90 x 20
Ref. 0410.00754	80 x 50 x 15

DC-Shrink®+ block

Pre-sintered zirconium oxide (isostatic pressing) allows large bridges to be created without distortion during sintering

Ref. 1501508-001	Ø 90 x 20
------------------	-----------

Blocks of different dimensions available on request.

In the absence of specific indications, the material is intended for crowns and bridges.

*Vita Zyrcomat and Mihm-Vogt HT are registered trade marks of the companies of the same name.

Description	Size in mm
-------------	------------

**DC-Leolux® blocks**

Ref. 1501161-001	Ø 90 x 12
Ref. 1501162-001	Ø 90 x 15
Ref. 0410.00562	80 x 50 x 12
Ref. 0410.00564	80 x 50 x 15

**DC-Procura® blocks**

For one-piece crowns only

Ref. 1501163-001	Ø 90 x 8
Ref. 1501164-001	Ø 90 x 10
Ref. 1501165-001	Ø 90 x 12
Ref. 1501166-001	Ø 90 x 13.5
Ref. 1501167-001	Ø 90 x 15
Ref. 0410.00520	80 x 50 x 8
Ref. 0410.00521	80 x 50 x 10
Ref. 0410.00522	80 x 50 x 12
Ref. 0410.00523	80 x 50 x 13.5
Ref. 0410.00524	80 x 50 x 15

**DC-Cristall® blocks**

For one-piece crowns only

Ref. 1501153-001	Ø 90 x 12
Ref. 0410.00552	80 x 50 x 12

**DC-Cream® blocks**

For one-piece crowns only

Ref. 1501158-001	Ø 90 x 12
Ref. 0410.00702	80 x 50 x 12

Description Size in mm



DC-Titan® blocks
Ref. 1501172-001 Ø 90 x 8
Ref. 1501173-001 Ø 90 x 10
Ref. 1501174-001 Ø 90 x 12
Ref. 1501175-001 Ø 90 x 13.5
Ref. 1501176-001 Ø 90 x 15
Ref. 1501178-001 Ø 90 x 20
Ref. 0410.00012 80 x 50 x 8
Ref. 0410.00004 80 x 50 x 10
Ref. 0410.00005 80 x 50 x 12
Ref. 0410.00006 80 x 50 x 13.5
Ref. 0410.00007 80 x 50 x 15



DC-Croco® blocks
Ref. 1501159-001 Ø 90 x 12
Ref. 1501160-001 Ø 90 x 15
Ref. 0410.00024 80 x 50 x 12
Ref. 0410.00026 80 x 50 x 15



DC-Tell® blocks
Ref. 1501170-001 Ø 90 x 15
Ref. 1501171-001 Ø 90 x 20
Ref. 0410.01500 80 x 50 x 15



DC-Cast® blocks
For casting, lost-wax technique
Ref. 1501156-001 Ø 90 x 15
Ref. 1501157-001 Ø 90 x 20
Ref. 0410.00994 80 x 50 x 15



DC-Temp blocks
Polymethyl Methacrylate (PMMA)
Ref. 1501421-001 Ø 90 x 15 (B1)
Ref. 1501422-001 Ø 90 x 15 (A2)
Ref. 1501423-001 Ø 90 x 15 (A3)



DC-Comp block
Synthetic resin for dental restoration
Ref. 1501509-001 Ø 90 x 15 (B1)

Blocks of different dimensions available on request.
In the absence of specific indications, the material is intended for crowns and bridges.



CONSUMABLES FOR QUALITY WITHOUT COMPROMISE



Retouching products, coolant liquid, anti-foam, burs: Bien-Air has created a range of consumables allowing you to optimise your results. They have been specially designed for Bien-Air machines and materials. For quality without compromise.

DC-LINER

Bonded to zirconium oxide, DC-Liner gives it a natural and fluorescent appearance. The white translucent surface of the zirconium oxide thus has a beneficial effect on the aesthetics of the final restoration. DC-Liner is manufactured using high-quality dental ceramics based on selected raw materials. The use of DC-Liner is always advantageous when zirconium oxide frameworks are to be veneered.

23

CAD-CAM

DC-Liner Z1 - Z6

10 g pots

- 0440.90010 Z1 - light
- 0440.90011 Z2 - reddish
- 0440.90012 Z3 - yellowish
- 0440.90013 Z4 - brownish
- 0440.90014 Z5 - bright/intense
- 0440.90015 Z6 - grey



Set DC-Liner

Contains:

DC-Liner Z1, Z3, Z5, Z6, 2x fluid

Ref. 0440.90000

DC-Liner, transparent liquid

1 x 15 ml bottle

Ref. 0440.90021



DC-Liner, coloured liquid

1 x 15 ml bottle

Ref. 0440.90020



DC-COR

DC-Cor is a thermoplastic material that is used to correct small margin step defects in zirconium oxide frameworks.



DC-Cor
White, 2 tablets
Ref. 0410.00540



DC-Cor
Red, 2 tablets
Ref. 0410.00541



Zirconium oxide test tablet
10 pieces
Ref. 0410.00530

LIQUIDS FOR MACHINES

Antifoaming liquid and coolant fluid
for the machine centre.

25



Coolant liquid
5 litres
Ref. 0440.00150



Anti-foam
1 litre
Ref. 0450.10022

Filter for machine
100 μm
Ref. 0440.10002

BURS FOR BIEN-AIR MILL200.

The very best burs manufactured from extra-strength tungsten carbide, with a cutting edge specially adapted to suit the parameters of the Mill200. Precision and longevity combine to meet your most stringent demands.



Tungsten carbide bur

For DC-Shrink®, DC-Tell® and DC-Cast®

Box of 2

Ref. 1304134-002 Ø 1 mm

Ref. 1304136-002 Ø 3 mm



Tungsten carbide bur

For DC-Titan®

Box of 2

Ref. 1304135-002 Ø 1,5 mm

Ref. 1304667-002 Ø 3 mm

BURS FOR BIEN-AIR MILL300



Diamond bur

Box of 5, per type

Ref. 0420.01010 Ø 1 mm

Ref. 0420.01001 Ø 1,5 mm

Ref. 0420.01002 Ø 2 mm

Ref. 0420.01004 Ø 3 mm

Ref. 0420.01006 Ø 5 mm

BURS FOR DCS PRECIDENT SYSTEM

27

High quality tools to meet your most stringent requirements. Made of tungsten carbide or diamond, or specially dimensioned for DC-Croco[®], they are incredibly precise and hard-wearing in order to guarantee a long service life.



Tungsten carbide bur

Box of 5, per type

- Ref. 0420.00000 Ø 1 mm
- Ref. 0420.00001 Ø 1,5 mm
- Ref. 0420.00002 Ø 2 mm
- Ref. 0420.00003 Ø 3 mm



Tungsten carbide bur for DC-Croco[®]

Box of 5, per type

- Ref. 0420.02001 Ø 1 mm
- Ref. 0420.02002 Ø 1,5 mm
- Ref. 0420.02003 Ø 2 mm
- Ref. 0420.02004 Ø 3 mm



Diamond bur

Box of 5, per type

- Ref. 0420.01010 Ø 1 mm
- Ref. 0420.01001 Ø 1,5 mm
- Ref. 0420.01002 Ø 2 mm
- Ref. 0420.01004 Ø 3 mm
- Ref. 0420.01006 Ø 5 mm

PRECISION, VERSATILITY AND ROBUSTNESS

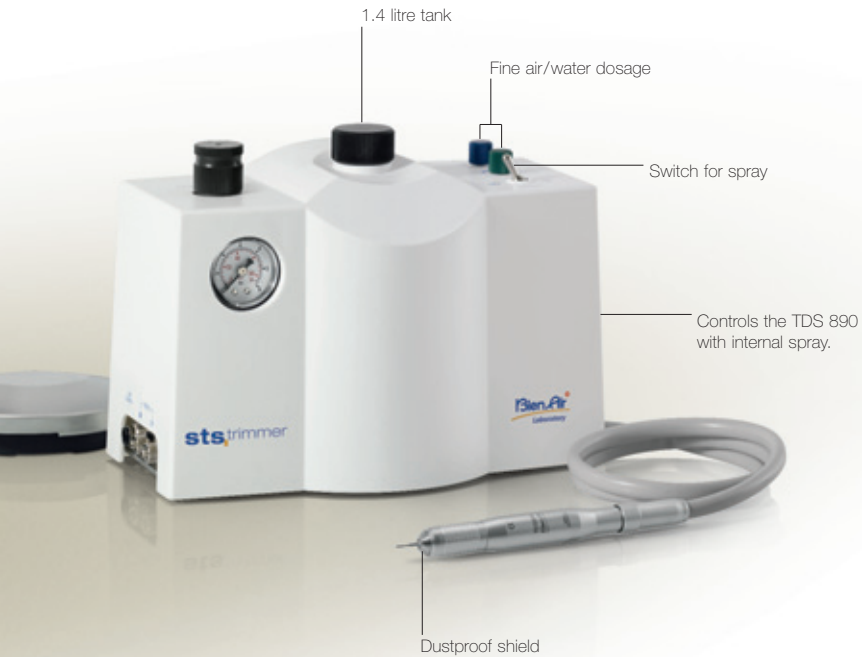
Particularly simple and robust, Bien-Air laboratory systems and instruments enjoy a reputation for performance and reliability that is already firmly established. Backed by more than 50 years of experience in the field of rotary instruments, at first using air micromotors then electric micromotors, Bien-Air has been able to meet the increasing demands involved in the retouching of prostheses and ceramics in the laboratory.

You will find an indispensable assistant in the range of laboratory systems or instruments from Bien-Air.

LABORATORY CONTROLS



PNEUMATIC CONTROLS



Particularly robust and simple to use, Bien-Air pneumatic units and their TD and TDS turbines provide the optimal response to the demands of ceramics and prosthetics specialists. Ideal for delicate, precise work, robust and simple to use, these units are unrivalled.

The superior qualities of the STS-Trimmer unit really set it apart. Fitted with a 1.4 litre tank, it can operate autonomously for significant periods. Controlled by separate switches, the flow rate and the air/water spray mixture can be finely adjusted for optimal cooling. In combination with turbines fitted with a dustproof shield and Friction Grip chuck, Bien-Air pneumatic assemblies offer you the best... Over the long-term.

STS-TRIMMER PNEUMATIC CONTROL WITH SPRAY

Simple and efficient table control with a large tank, fitted with the TDS 890 straight turbine.

Specifications:

- Controls the TDS 890 turbine with spray
- Turbine speed up to 300,000 rpm
- Turbine ideal for delicate, precise work
- Large 1.4 litre tank
- Air/water mixture plus adjustable spray flow rate
- Manual spray switch
- Pedal to adjust turbine speed and activate spray
- Straight hose in grey silicone, 4-way coupling
- Reliability under all conditions
- Allows machining of ceramic and zirconium



STS-Trimmer unit with spray

1 STS-Trimmer unit with spray	ref. 1600643-001
1 TDS 890 turbine with internal spray	ref. 1600163-001
1 pedal	ref. 1600312-001
1 straight hose with 4-way coupling	ref. 1600390-001
Ref. 1700296-001	

PNEUMATIC CONTROLS FOR TD 783 TURBINES

Simple and efficient controls, fitted with the TD 783 straight turbine. A choice of two versions, the S001 table model, stable yet compact, or the SF 811 wall or table-leg mounted unit, for extra working space.

Specifications:

- Turbine speed up to 300,000 rpm
- Turbine ideal for delicate, precise work
- Pedal to adjust turbine speed
- Straight hose in grey silicone, internal Ø 1/8"
- Reliability under all conditions



S001 set

- 1 S001 table model
- 1 TD 783 turbine
- 1 pedal
- 1 coiled grey hose, internal Ø 1/8"

Ref. 1700126-001

- ref. 1600318-001
- ref. 1600161-001
- ref. 1600312-001
- ref. 1200022-001



SF 811 set

- 1 SF 811 wall-mounted unit
- 1 TD 783 turbine
- 1 pedal
- 1 coiled grey hose, internal Ø 1/8"

Ref. 1700083-001

- ref. 1600167-001
- ref. 1600161-001
- ref. 1600312-001
- ref. 1200022-001

STRAIGHT TURBINES

With a speed of 300,000 rpm, these straight laboratory turbines prove ideal for delicate, precise work. A dust protection shield, unique to Bien-Air, helps give them an extraordinarily long service life.

33



TD 783 turbine

For connection to hose, internal Ø 1/8" (3.17mm), friction grip (FG), burr shank Ø 1.6 mm

Ref. 1600161-001



TD 783 turbine

For 2-way coupling hose, friction grip (FG), burr shank Ø 1.6 mm

Ref. 1600162-001



TDS 890 turbine with spray

For station with STS-Trimmer spray, friction grip (FG), 4-way coupling, burr shank Ø 1.6 mm

Ref. 1600163-001



ELECTRICAL CONTROL



PROLAB Basic has become an essential tool. This unit and its motor place Bien-Air quality within the reach of all handpieces with type E couplings. This is a robust, high-performance micromotor. Designed without brushes or sensors, it is fitted with a self-ventilation system. Specially designed for laboratory controls, it displays vibration-free rotation and smooth acceleration at all speeds. The ideal extension for the Prolab motor, the PML 1:1 direct ratio straight handpiece is fitted with a reinforced locking mechanism and a highly efficient anti-rotation system on the motor. Prolab Basic, you can no longer do without it.

Prolab Basic laboratory table control with progressive control pedal. For 100, 115 and 230 Vac.



Prolab Basic set with progressive pedal

- 1 Prolab Basic table unit
- 1 motor 1000-40,000 rpm
- 1 motor cable
- 1 progressive pedal
- 1 holder

- ref. 1600442-001
- ref. 1600443-001
- ref. 1600431-001
- ref. 1600440-001
- ref. 1301575-001

Ref. 1700252-001

PROLAB BASIC TABLE CONTROL

Prolab Basic laboratory table control with ON/OFF control pedal.
For 100, 115 and 230 Vac.



Prolab Basic set with ON/OFF pedal

1 Prolab Basic table unit
1 motor 1000-40,000 rpm
1 motor cable
1 ON/OFF pedal
1 holder

Ref. 1700041-001

ref. 1600442-001
ref. 1600443-001
ref. 1600431-001
ref. 1600447-001
ref. 1301575-001

STRAIGHT HANDPIECES



PML 1:1

Laboratory handpiece, direct ratio, locking ring, with retractable anti-rotation catch, bur shank Ø 2.35 mm

Ref. 1600156-001



PM 1:1

Without light, direct ratio, Interchangeable sleeves with or without irrigation tube, locking ring, bur shank Ø 2.35 mm

Ref. 1600052-001



1:1 sleeve

Without external irrigation tube.

For straight handpiece PM 1:1 ref. 1600052-001

Ref. 1500003-001



BIEN-AIR QUALITY

In order to guarantee long-term optimum performance as well as constantly renewed pleasure in one's work, Bien-Air has designed a range of top-quality accessories and control instruments. These all benefit from the same attention to detail as the other products in the range. Bien-Air quality, right down the line.

MAINTENANCE AND ACCESSORIES



MAINTENANCE PRODUCTS



Spraynet

Cleaning spray 500 ml.

Box of 6.

For instruments and equipment

Ref. 1600036-006



Lubrimed

Medical grease for ball-bearing turbines,
except Eolia.

Box of 6 cartridges

Ref. 1600037-006



Lubrimed greaser

For ball-bearing turbines, except Eolia

Ref. 1000003-001



Cleaning wire

For unblocking the spray ducts
of turbines, contra-angles and handpieces.

Box of 10

Ref. 1000001-010



Progressive foot pedal
Prolab Basic
Ref. 1600440-001



ON/OFF foot pedal
Prolab Basic
Ref. 1600447-001



Mounting bracket
Prolab Basic
Ref. 1301220-001



Holder
For instruments and micromotors
Ref. 1301575-001

PROLAB BASIC ACCESSORIES



Prolab Basic micromotor
Self-ventilating, type E coupling
as per ISO 3964, rotation speed
1000-40,000 rpm
Ref. 1600443-001



Prolab Basic black cable
For micromotor, length 3 m
Ref. 1600431-001

ACCESSORIES FOR TD 783 AND TDS 890 TURBINES



Chuck pusher with friction grip (FG)
For TD 783 and TDS 890 turbines
Ref. 1000005-001



2/3-way coupling
Allows use of the TD 783 turbine
with 2-way coupling
on S001 and SF 811 stations
Ref. 1500010-001

MEASURING INSTRUMENTS

The air pressure gauges measure the pressure of the air entering turbines and air motors.



3-way pressure gauge
For 2- or 3-way coupling
Ref. 1600242-001



4-way pressure gauge
For 4-way coupling
with or without light
Ref. 1600243-001



References	Descriptions	Pages
0410.00004	DC-TITAN® 80X50X10	20
0410.00005	DC-TITAN® 80X50X12	20
0410.00006	DC-TITAN® 80X50X13.5	20
0410.00007	DC-TITAN® 80X50X15	20
0410.00012	DC-TITAN® 80X50X8	20
0410.00024	DC-CROCO® 80X50X12	20
0410.00026	DC-CROCO® 80X50X15	20
0410.00500	DC-ZIRKON® 80X50X8	18
0410.00501	DC-ZIRKON® 80X50X10	18
0410.00502	DC-ZIRKON® 80X50X12	18
0410.00503	DC-ZIRKON® 80X50X13.5	18
0410.00504	DC-ZIRKON® 80X50X15	18
0410.00510	DC-ZIRKON® COL. 80X50X8	18
0410.00511	DC-ZIRKON® COL. 80X50X10	18
0410.00512	DC-ZIRKON® COL. 80X50X12	18
0410.00513	DC-ZIRKON® COL. 80X50X13.5	18
0410.00514	DC-ZIRKON® COL. 80X50X15	18
0410.00520	DC-PROCURA® 80X50X8	19
0410.00521	DC-PROCURA® 80X50X10	19
0410.00522	DC-PROCURA® 80X50X12	19
0410.00523	DC-PROCURA® 80X50X13.5	19
0410.00524	DC-PROCURA® 80X50X15	19
0410.00530	ZIRKONOXID TESTTABLETS (10PCES)	24
0410.00540	DC-COR WHITE (2 TABLETS)	24
0410.00541	DC-COR RED (2 TABLETS)	24
0410.00552	DC-CRISTALL® 80X50X12	19
0410.00562	DC-LEOLUX® 80X50X12	19
0410.00564	DC-LEOLUX® 80X50X15	19
0410.00702	DC-CREAM® 80X50X12	19
0410.00754	DC-SHRINK® 80X50X15	18
0410.00994	DC-CAST® 80X50X15	20
0410.01500	DC-TELL® 80X50X15	20
0420.00000	CARBIDE END MILL Ø1 (5 PCES)	27
0420.00001	CARBIDE END MILL Ø1.5 (5 PCES)	27
0420.00002	CARBIDE END MILL Ø2 (5 PCES)	27
0420.00003	CARBIDE END MILL Ø3 (5 PCES)	27
0420.01001	DIAMOND BURR Ø1.5 (5 PCES)	26/27
0420.01002	DIAMOND BURR Ø2 (5 PCES)	26/27
0420.01004	DIAMOND BURR Ø3 (5 PCES)	26/27
0420.01006	DIAMOND BURR Ø5 (5 PCES)	26/27
0420.01010	DIAMOND BURR Ø1 (5 PCES)	26/27
0420.02001	DC-CROCO® END MILL Ø1 (5 PCES)	27
0420.02002	DC-CROCO® END MILL Ø1.5 (5 PC)	27
0420.02003	DC-CROCO® END MILL Ø2 (5 PCES)	27
0420.02004	DC-CROCO® END MILL Ø3 (5 PCES)	27
0440.00150	COOLANT LIQUID 5L	25
0440.10002	FILTER BAG 100UM (M3, M4)	25
0440.90000	DC-LINER SET	23
0440.90010	DC-LINER Z1-LIGHT	23
0440.90011	DC-LINER Z2-REDDISH	23
0440.90012	DC-LINER Z3-YELLOWISH	23
0440.90013	DC-LINER Z4-BROWNISH	23
0440.90014	DC-LINER Z5-BRIGHT/INTENSIVE	23
0440.90015	DC-LINER Z6-GREY	23
0440.90020	DC-LINER FLUID COLOURED	23
0440.90021	DC-LINER FLUID CLEAR	23
0450.10022	ANTI-FOAM 1L	25
1000001-010	TOOL CLEANING D 0.1X23MM	40
1000003-001	MAINT GREASER	40
1000005-001	TOOL BUR CHANGER TD/TDS	40
1200022-001	HOSE CONSOLE S001/SF811 GREY	32
1301220-001	HOLDER PROLAB	41
1301575-001	HOLDER PM	35/36/41
1304134-002	MILL 200 CARBIDE BURR 1MM	26
1304135-002	MILL 200 CARBIDE BURR 1.5MM	26
1304136-002	MILL 200 CARBIDE BURR 3MM	26
1304667-002	MILL 200 CARBIDE BURR 3MM	26
1500003-001	SLEEVE CONE PM 1:1 EXT SPRAY	37
1500010-001	BORDEN COUPLING (BRAIDED)	42
1501143-001	DC-ZIRKON® Ø90X8	18
1501144-001	DC-ZIRKON® Ø90X10	18

References	Descriptions	Pages
1501145-001	DC-ZIRKON® Ø90X12	18
1501146-001	DC-ZIRKON® Ø90X13.5	18
1501147-001	DC-ZIRKON® Ø90X15	18
1501148-001	DC-ZIRKON® COL. Ø 90X8	18
1501149-001	DC-ZIRKON® COL. Ø 90X10	18
1501150-001	DC-ZIRKON® COL. Ø 90X12	18
1501151-001	DC-ZIRKON® COL. Ø 90X13.5	18
1501152-001	DC-ZIRKON® COL. Ø 90X15	18
1501153-001	DC-CRISTALL® Ø90X12	19
1501156-001	DC-CAST® Ø 90X15	20
1501157-001	DC-CAST® Ø 90X20	20
1501158-001	DC-CREAM® Ø 90X12	19
1501159-001	DC-CROCO® Ø 90X12	20
1501160-001	DC-CROCO® Ø 90X15	20
1501161-001	DC-LEOLUX® Ø 90X12	19
1501162-001	DC-LEOLUX® Ø 90X15	19
1501163-001	DC-PROCURA® Ø 90X8	19
1501164-001	DC-PROCURA® Ø 90X10	19
1501165-001	DC-PROCURA® Ø 90X12	19
1501166-001	DC-PROCURA® Ø 90X13.5	19
1501167-001	DC-PROCURA® Ø 90X15	19
1501168-001	DC-SHRINK® Ø 90X15	18
1501169-001	DC-SHRINK® Ø 90X20	18
1501170-001	DC-TELL® Ø 90X15	20
1501171-001	DC-TELL® Ø90X20	20
1501172-001	DC-TITAN® Ø 90X8	20
1501173-001	DC-TITAN® Ø 90X10	20
1501174-001	DC-TITAN® Ø 90X12	20
1501175-001	DC-TITAN® Ø 90X13.5	20
1501176-001	DC-TITAN® Ø 90X15	20
1501178-001	DC-TITAN® Ø 90X20	20
1501279-001	DC-ZIRKON® Ø 90X20	18
1501280-001	DC-ZIRKON® COL. Ø 90X20	18
1501421-001	DC- TEMP Ø 90X15 (B1)	20
1501422-001	DC-TEMP Ø 90X15 (A2)	20
1501423-001	DC-TEMP Ø 90X15 (A3)	20
1501508-001	DC-SHRINK® + Ø 90X20	18
1501509-001	DC-COMP Ø 90X15 (B1)	20
1600036-006	MAINT SPRAYNET	40
1600037-006	MAINT LUBRIMED CARTRIDGE	40
1600052-001	PM 1:1 EXT SPRAY	37
1600156-001	PM PROLAB BASIC	37
1600161-001	TUR TD783	32/33
1600162-001	TUR TD783 2H	33
1600163-001	TUR TDS890 4H	31/33
1600167-001	CONSOLE SF811	32
1600242-001	PRESSURE GAUGE 3H	43
1600243-001	PRESSURE GAUGE 4H	43
1600312-001	FOOTCTRL PNEUMATIC	31/32
1600318-001	CONSOLE S001	32
1600390-001	HOSE STS-TRIMMER 4H	31
1600431-001	CABLE MOT PROLAB	35/36/42
1600440-001	FOOTCTRL PROLAB	35/41
1600442-001	CONSOLE PROLAB BASIC	35/36
1600443-001	MOT PROLAB BASIC	35/36/42
1600447-001	FOOTCTRL PROLAB BASIC	36/41
1600624-001	COMPUTER LAB SECTION	9/11/13
1600627-001	MACHINE MILL 200	11
1600643-001	CONSOLE STS-TRIMMER	31
1600655-001	MACHINE MILL 300	13
1700041-001	SET PROLAB BASIC	36
1700083-001	SET SF811+TD783	32
1700126-001	SET S001+TD783	32
1700252-001	SET PROLAB BASIC FTCTRL	35
1700283-001	CAD/CAM SYSTEM (SCAN+MILL 200)	9/11
1700288-001	SCANNER SCAN 200 + CAD	9/11/13
1700290-001	MACHINE MILL 200 + CAM	9/11
1700296-001	SET STS-TRIMMER	31
1700323-001	CAD/CAM SYSTEM MILL 300	9/13
1700324-001	MACHINE MILL 300 + CAM	9/13

ADRESSES BIEN-AIR

Bien-Air Dental SA
Länggasse 60
Case postale
2500 Bienne 6, Switzerland
Tel. +41 (0)32 344 64 64
Fax +41 (0)32 344 64 91
dental@bienair.com

Bien-Air
Deutschland GmbH
Jechtinger Straße 11
79111 Freiburg, Deutschland
Tel. +49 (0)761 45 57 40
Fax +49 (0)761 47 47 28
ba-d@bienair.com

Bien-Air España SA
Entença, 169 Bajos
08029 Barcelona, España
Tel. (+34) 934 25 30 40
Fax (+34) 934 23 98 60
ba-e@bienair.com

Bien-Air USA, Inc.
Medical Technologies
5 Corporate Park
Suite 160
Irvine, CA 92606, USA
Phone 1-800-433-BIEN
Phone 949-477-6050
Fax 949-477-6051
ba-usa@bienair.com

Bien-Air France Sàrl
55-57, avenue Jean Lolive
93508 Pantin Cedex, France
Tel. +33 (0)1 41 83 60 70
Fax +33 (0)1 48 96 07 40
ba-f@bienair.com

Bien-Air Italia s.r.l.
Via Vaina 3
20122 Milano, Italia
Tel. +39 (02) 58 32 12 51/52/54
Fax +39 (02) 58 32 12 53
ba-i@bienair.com

Bien-Air UK Limited
Arundel House
Unit 1 - Ground Floor
Amberley Court, Whitworth Road
Crawley, West Sussex, RH11 7XL
England
Tel. +44 (0)1293 550 200
Fax +44 (0)1293 520 481
ba-uk@bienair.com

Bien-Air Asia Ltd.
Nishi-Ikebukuro
Daiichi-Seimei Bldg. 10F
2-40-12 Ikebukuro, Toshimaku
Tokyo, 171-0014, Japan
ビエン・エア・アジア株式会社
〒171-0014
東京都豊島区池袋2-40-12
西池袋第一生命ビルディング10F
Tel. +81 (3) 5954-7661
Fax +81 (3) 5954-7660
ba-asia@bienair.com

Beijing Bien-Air
Medical Instrument
Technology Service Co. Ltd.
Room 907, The Exchange Beijing,
No 118 Jian Guo Lu Yi,
Chao Yang District,
Beijing 100022, China
北京彼岸医疗器械
技术服务有限公司
北京市朝阳区建国路
乙118号招商局中心
京汇大厦907室
电话: +86 10 6567 0651
传真: +86 10 6567 8047
ba-beijing@bienair.com

www.bienair.com