



# Master Catalogue

# 2012

V EDITION

Micerium S.p.A.  
Via G. Marconi, 83  
16036 Avegno (GE) • Italy  
Tel. +39 0185 7887 880  
Fax +39 0185 7887 970  
e-mail: [hfo@micerium.it](mailto:hfo@micerium.it)  
orders: [sales@micerium.it](mailto:sales@micerium.it)  
<http://www.micerium.com>

V.A.T. CEE IT01199870104  
Cap. Soc. int. Vers. 1.000.000 euro  
Cod. Fiscale e nr. iscrizione Reg. Imprese  
Ge n° 01199870104 - R.E.A.265808

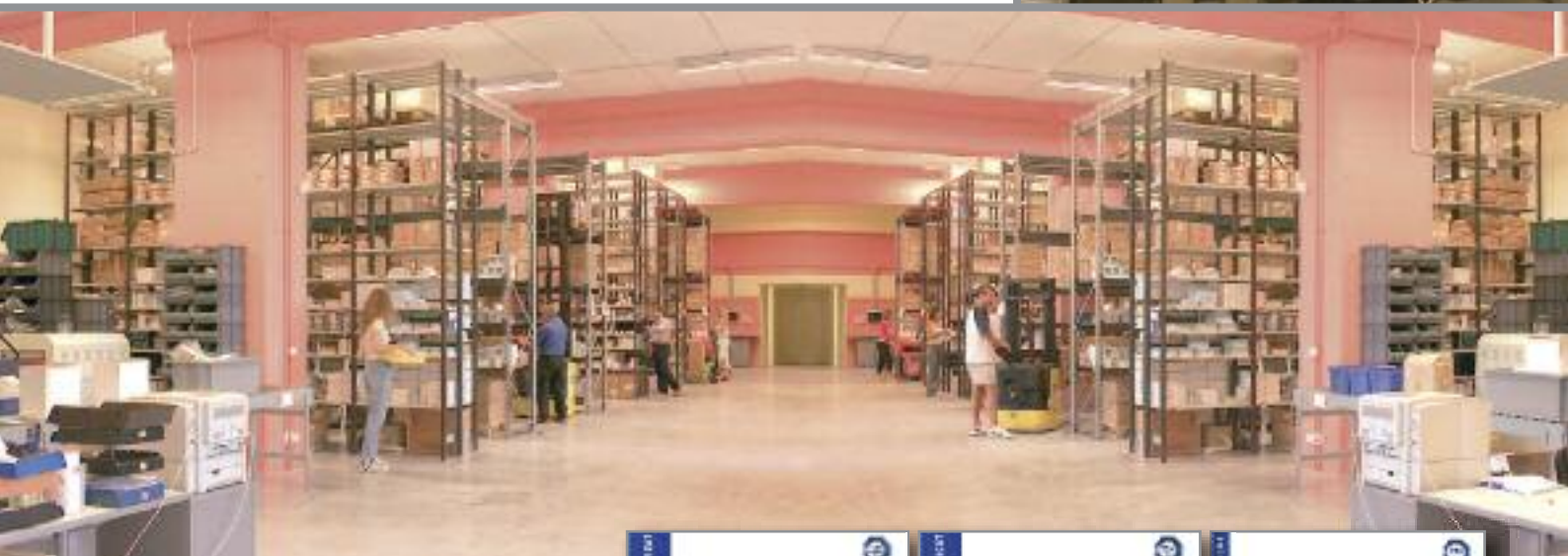




Dear customer,

Micerium S.p.A. is a company operating in the dental field for more than two decades, whose business is in the design and manufacture of medical devices for the dental industry, marketing of medical devices and products for the dental field under other or its own brand name of products for the dental industry.

MICERIUM S.p.A. refers to the quality as a fundamental principle for its activities. We believe that the term "quality" means to ensure our customers innovative products and services that meet or even exceed their expectations.



This level of excellence should not only be demonstrated by the existence of a quality system throughout the organization that meets the requirements of the UNI EN ISO 9001:2000, UNI EN ISO 13485:2004 and DIR 93/42 EEC - Annex II.3, Annex IV, Annex V and Annex VII (DL 24 February 1997 No. 46 integrated with upgrades) and other mandatory requirements, such as the American Good Manufacturing Practice (21 CFR 820.1 to 21 CFR 820,250) and the Canadian CMDR, but measured by the degree of satisfaction of their customers.



# QUALITY



**AESTHETICS**

Enamel plus HRi-HFO Composite	8	Adhesive and Etching	26
Flowable Composite,		Tender Fiber	29
Stain, Instruments and Brushes	14	Ena White Bleaching	30
Composite Finishing & Polishing	16	Temporary Resin	32
Ena Post Glass Fiber Post	22	Ena Soft	33
Ena Cem Cement	24		



**LABORATORY**

Router & Electric saw	36	Alloy and Investment	40
Die treatment & pattern resin	37	Vacumix - Light Curing Units	41
Wax	38	Enamel plus Tender	
Instruments	39	composite	42
		Resin	46

# Index



## Board Direction



**Maria Picarelli**  
President  
Chief Administrative  
Officer and Human  
Resources



**Gisella Allemand Miceli**  
C.E.O.  
R&D Coordinator  
Aesthetics Department  
Director Export Dep.



**Eugenio Miceli**  
C.E.O.  
Managing Director  
Dental Department



**Ottaviano Miceli**  
C.E.O.  
Managing Director  
Orthodontic & Implant  
Department



**Michèle Allemand  
de Frouchtman**  
C.E.O.  
Spain Area Manager

## Export Department



**Nathalie Ramponi**  
Head of customer service  
International Sales  
Seminar Specialist



**Jana Dostalova**  
Sales Manager  
Middle and East Europe



**Mario Schilman**  
Sales Manager  
Hispanic Area

## Customer Service



**Francesca Tanghetti**  
Customer Service



**Isabella Ruggia**  
Customer Service

## Quality & Safety



**Carla Tazzer**  
Quality Control



**Paola Barberis**  
Safety Engineer

## Packaging & Invoicing Department



**Jolanda Picarelli**  
Packaging Manager



**Daniela Castelli**  
Packaging



**Paola Manesso**  
Packaging



**Concetta Incorvaia**  
Packaging



**Rita Correale**  
Invoicing

## Direction assistants



**Giuliana Bozzo**  
Correspondence and  
filing



**Claudia Masi**  
Correspondence and  
purchasing

## Accounting



**Riccardo Mumenthaler**  
Customer Accounting



**Laura Medici**  
Customer Accounting



**Fiorenza Martinotti**  
Customer Accounting

## Graphic & Internet



**Gianluca Zeri**  
Computer Specialist



**Giorgia Rea**  
Responsible Graphic  
Design



**Viviane Tsubaki**  
Graphic Designer

## Shipping



**Alessandro Farinelli**  
Shipping



**Diego Marzocchi**  
Shipping

**Micerium S.p.A.** pursues a policy of continuous quality improvement, which is implemented with the involvement of each operating within the resource itself.

The management commit in deeply involved in developing and managing the necessary resources to meet those expectations, involving all internal and external corporate, including representatives and suppliers, with the aim to continuously improve the level of its professional staff, aimed at achieving customer satisfaction with product offerings and services more efficient and a consequent reduction in complaints and non-compliance.

All staff are committed to work best, to achieve the highest standards within the company and, to this aim, one of the objectives of Micerium is to maintain a high level of the working environment during time.

The aim of Micerium S.p.A. is also to propose to the dental industry high quality products that are used with modern and advanced techniques, and at the same time simple and reproducible. To this aim, another goal of Micerium is to point to both its group sales, and its customers training, helping to organize or support courses that allow an improvement of the level of professional dentists and dental technicians.

Micerium S.p.A.

**Maria Picarelli**

President

# Aesthetics

VENEZIA





## Aesthetics

- 8 Enamel plus HFi - HFO Composite
- Flowable Composite,
- 14 Stain, Instruments & Brushes
- 16 Composite Finishing and Polishing
- 22 Ena Post Glass Fiber Post
- 24 Ena Cem Cement
- 26 Adhesive and Etching
- 29 Tender Fiber
- 30 Ena White Bleaching System
- 32 Temporary Resin
- 33 Ena Soft

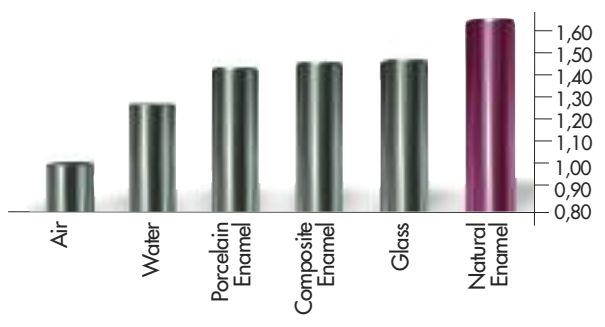
# THE PROBLEM

## THE REFRACTION OF COMPOSITE & CERAMIC MATERIALS...



"Glass Effect" lowers the value of the restoration with a gray halo on the margin (dark line)

### RELATIVE REFRACTIVE INDEX OF LIGHT (n)



The relative refractive indexes of common materials measured at a temperature of 20°C and with a 589 nm wavelength light indicates the deviation and speed reduction of the light that crosses a translucent area (Vanini Mangani Klimovskaia "Conservative Restoration of Anterior Teeth" Acme 2005)

### HRi: THE TRUE ENAMEL



HRi Enamel veneers showing natural effects

Different thicknesses of Enamel plus HRi change in shade in the same manner as Natural Enamel would in the same thickness.

Thickness of 0,6 mm allows ideal translucency



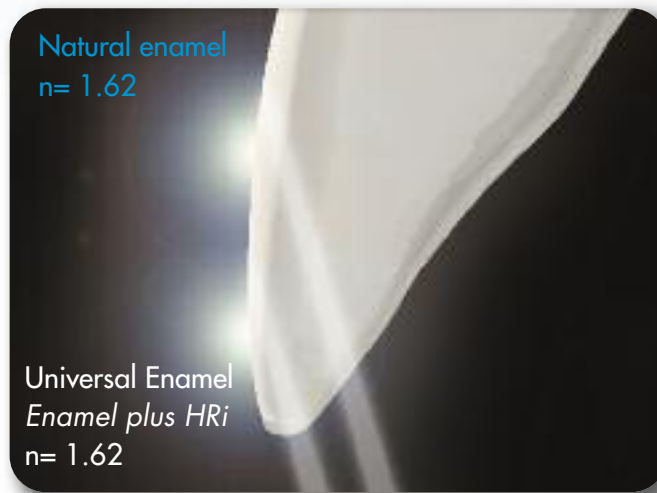
Application of dentine and opalescent OBN



- UE1** low value (amber)
- UE2** medium value
- UE3** high value (for children or bleached teeth)

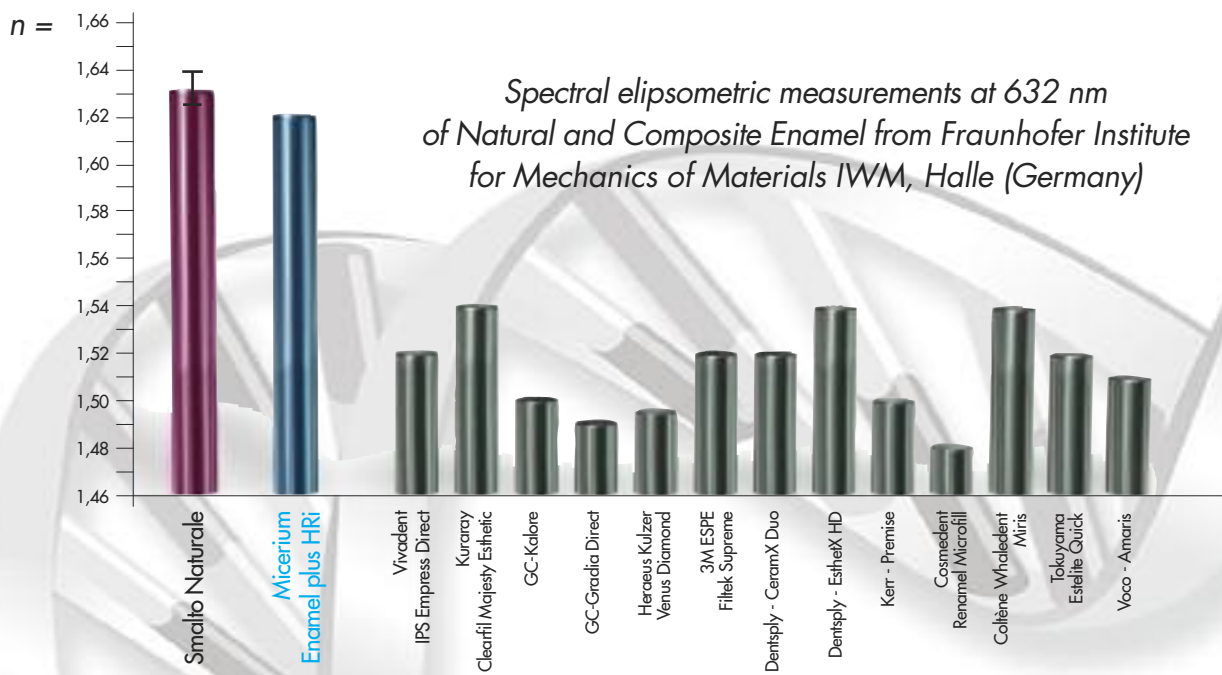


... THE SAME REFRACTIVE INDEX AS NATURAL ENAMEL

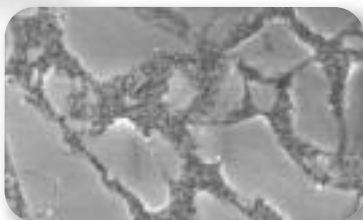


Invisible margins, in **HRi** restoration, using the same thickness of the natural enamel

## RELATIVE REFRACTIVE INDEX



## NANOTECHNOLOGY REM



### • Composition FILLING (80% WEIGHT - 63% VOLUME)

- Surface treated nano zirconium oxide with high refractive index (12% in weight)
- New type of filling glass with high refractive index (68% in weight)

### • Ideal physical data

for every type of direct or indirect restoration

- Vickers Hardness 700 MPa
- Modulus of elasticity 14.500 MPa
- Flexural Strength 170 MPa
- Compressive strength 450 MPa
- High radiopacity 600% Al



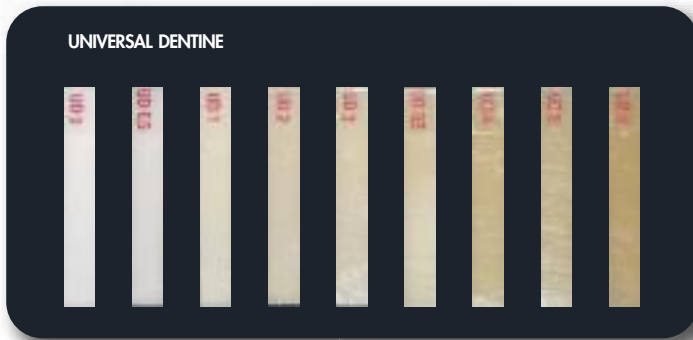
The HRi project has been devised from Dr. L.Vanini and developed in collaboration with Dr. T. Niem (Patent Pending)

This project (HA-Project-Nr. 130/07-01) has received special funding from the State of Hessen, co-financed by funds of the European Union (European Social Fund - ESF) for scientific innovation and advancement.

# ENAMEL PLUS HRi

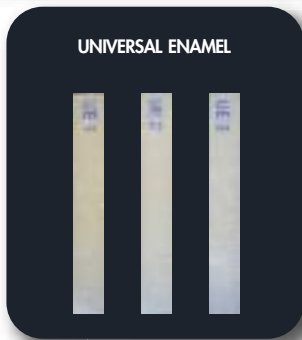
## Characteristics and clinical cases

### TECHNOLOGICAL ADVANTAGES



- **New dentine** with fluorescence and increased translucency calibrated to natural dentine
- **Ultra-light Dentine:** UD0 and UD 0,5 for bleached teeth

DENTINE



- **Invisible margin** thanks to high refraction index no "glass effect" lowering the value of the restoration
- **Opalescent effect blue and amber** created from HRi Enamel (Transparency 30% until 0,8 mm)

ENAMEL



- **Characterization and intensive effect** created by intensive enamel (IM, IWS, IW) and opalescent amber (OA)
- **Opalescent blue effect** enhanced by Opalescent OBN

ADDITIONAL SHADE

### OPERATING ADVANTAGES: SIMPLE TECHNIQUE

**"JUST ENAMEL" TECHNIQUE**  
using Enamel plus HRi universal enamel

**"BASIC" TECHNIQUE**  
using Enamel plus HRi, dentine and enamel

**"MASTER" TECHNIQUE**  
additional shades for opalescence, intensive and characterization



# Enamel plus HRi KIT



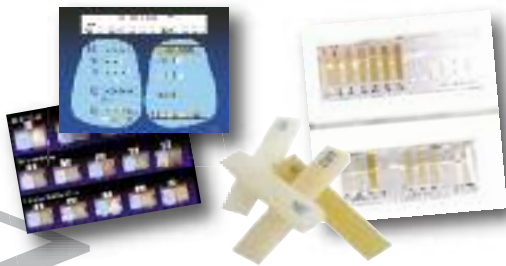
CHR15



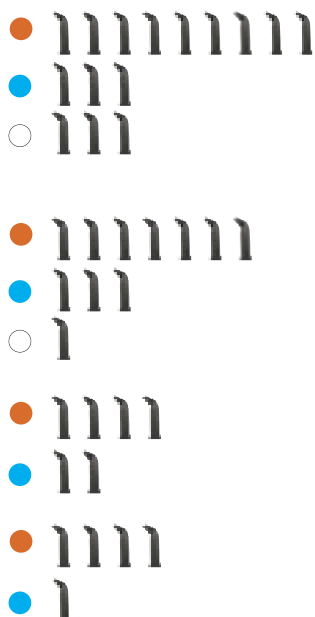
CHR6

Ref	Description	Q.ty
<b>CHR15</b>	<b>ENAMEL PLUS HRi Complete Kit</b> including 15 syringes 5 g with holder 9 dentine: UDO, UDO,5, UD1 (A1), UD2 (A2), UD3 (A3), UD3,5 (A3,5), UD4 (A4), UD5, UD6 3 universal enamel: UE1, UE2, UE3 3 intensive enamel: White (IW), White Spot (IWS), Milky (IM)	15x5g
<b>CHR11</b>	<b>ENAMEL PLUS HRi Complete Kit</b> including 11 syringes 5 g with holder 7 dentine: UDO, UD1 (A1), UD2 (A2), UD3 (A3), UD4 (A4), UD5, UD6 3 universal enamel: UE1, UE2, UE3 1 intensive enamel: White Spot (IWS)	11x5g
<b>CHR6*</b>	<b>TRIAL KIT ENAMEL PLUS HRi</b> including 6 syringes 2,5 g with holder 4 dentine: UD1 (A1), UD2 (A2), UD3 (A3), UD4 (A4) 2 universal enamel: UE2, UE3	6x2,5g
<b>CHR5B</b>	<b>"Bleach" KIT ENAMEL PLUS HRi</b> including 5 syringes 2,5 g with holder 4 dentine: UDO, UDO,5, UD1 (A1), UD2 (A2) 1 universal enamel: UE3	5x2,5g

*\*It is possible to replace UE1 with UE3 (Ref. Kit CHR6B)*

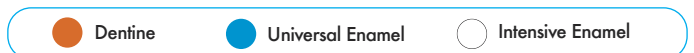


Ref	Description	Q.ty
<b>CSG15</b>	Enamel plus HRi complete shade guide	15 shades
<b>HFOMAP2</b>	Colour chart for color registration	50 sheets
<b>PLEXI26D</b>	Plexiglass syringe holder 26 holes	1 pc
<b>PLEXI9D</b>	Plexiglass syringe holder 9 holes	1 pc



Ref	Description	Q.ty
<b>CHR15T</b>	<b>ENAMEL PLUS HRi Complete Kit Tips</b> including 90 tips (6 tips x 15 shades) 9 dentine: UDO, UDO,5, UD1 (A1), UD2 (A2), UD3 (A3), UD3,5 (A3,5), UD4 (A4), UD5, UD6 3 universal enamel: UE1, UE2, UE3 3 intensive enamel: White (IW), White Spot (IWS), Milky (IM)	15x6 pcs
<b>CHR11T</b>	<b>ENAMEL PLUS HRi Complete Kit Tips</b> including 66 tips (6 tips x 11 shades) 7 dentine: UD1 (A1), UD2 (A2), UD3 (A3), UD3,5 (A3,5), UD4 (A4), UD5, UD6 3 universal enamel: UE1, UE2, UE3 1 intensive enamel: White Spot (IWS)	11x6 pcs
<b>CHR6T*</b>	<b>ENAMEL PLUS HRi TRIAL KIT Tips</b> including 36 tips (6 tips x 6 shades) 4 dentine: UD1(A1), UD2(A2), UD3(A3), UD4(A4) 2 universal enamel: UE2, UE3	6x6 pcs
<b>CHR5BT</b>	<b>ENAMEL PLUS HRi "Bleach" KIT Tips</b> including 30 tips (6 tips x 5 shades) 4 dentine: UDO, UDO,5, UD1 (A1), UD2 (A2) 1 universal enamel: UE3	5x6 pcs

*\*It is possible to replace UE1 with UE3 (Ref. Kit CHR6BT)*



## ENAMEL PLUS HRi REFILLS



Ref	Description	Syringes
CHRUE1	Enamel plus HRi universal enamel UE1	5 g
CHRUE2	Enamel plus HRi universal enamel UE2	5 g
CHRUE3	Enamel plus HRi universal enamel UE3	5 g
CHRIW	Enamel plus HRi intensive enamel White	5 g
CHRIM	Enamel plus HRi intensive enamel Milky	5 g
CHRIWS	Enamel plus HRi int.enamel White Spot	5 g
CHRUD0	Enamel plus HRi dentine UD0	5 g
CHRUD0,5	Enamel plus HRi dentine UD0,5	5 g
CHRUD1	Enamel plus HRi dentine UD1 (A1)	5 g
CHRUD2	Enamel plus HRi dentine UD2 (A2)	5 g
CHRUD3	Enamel plus HRi dentine UD3 (A3)	5 g
CHRUD3,5	Enamel plus HRi dentine UD3,5 (A3,5)	5 g
CHRUD4	Enamel plus HRi dentine UD4 (A4)	5 g
CHRUD5	Enamel plus HRi dentine UD5	5 g
CHRUD6	Enamel plus HRi dentine UD6	5 g
CHFOA	Enamel Plus opalescent enamel Amber	5 g
CHFOBN	Enamel Plus opal.enamel Blue Natural	5 g

Universal Enamel
  Intensive
  Dentine
  Opalescent

Ref	Description	Tips
CHRTUE1	Enamel plus HRi universal enamel UE1	12x0,3g
CHRTUE2	Enamel plus HRi universal enamel UE2	12x0,3g
CHRTUE3	Enamel plus HRi universal enamel UE3	12x0,3g
CHRTIW	Enamel plus HRi intens. enamel White	12x0,3g
CHRTIM	Enamel plus HRi intensive enamel Milky	12x0,3g
CHRTIWS	Enamel plus HRi int. enamel White Spot	12x0,3g
CHRTUD0	Enamel plus HRi tips UD0	12x0,3g
CHRTUD0,5	Enamel plus HRi tips UD 0,5	12x0,3g
CHRTUD1	Enamel plus HRi tips UD1 (A1)	12x0,3g
CHRTUD2	Enamel plus HRi tips UD2 (A2)	12x0,3g
CHRTUD3	Enamel plus HRi tips UD3 (A3)	12x0,3g
CHRTUD3,5	Enamel plus HRi tips UD3,5 (A3,5)	12x0,3g
CHRTUD4	Enamel plus HRi tips UD4 (A4)	12x0,3g
CHRTUD5	Enamel plus HRi tips UD5	12x0,3g
CHRTUD6	Enamel plus HRi tips UD6	12x0,3g
CHFTOA	Enamel Plus opalescent enamel Amber	12x0,3g
CHFTOBN	Enamel Plus opal.enamel Blue Natural	12x0,3g

## SYRINGE FOR TIPS

## Autoclavable precision syringe for tips

Facilitates the measurement of the needed amount of composite.



Ref	Description	Q.ty
COSSIR	Autoclavable precision syringe for tips	1 pc

## Microhybrid, radiopaque light curing composite

"HFO" the classical composite for direct and indirect aesthetic reconstructions.

- Fluorescent dentine calibrated to the natural tooth
- Generic Enamels: three value to reproduce elderly teeth (GE1), adult (GE2) and young (GE3)
- Opalescent and Intensive enamels for reproducing opalescent and characterization of the natural enamel

Ref	Description	Syringes
CHFGE1	Enamel Plus HFO generic enamel GE1	5 g
CHFGE2	Enamel Plus HFO generic enamel GE2	5 g
CHFGE3	Enamel Plus HFO generic enamel GE3	5 g
CHFOW	Enamel Plus HFO opalescent enamel White	5 g
CHFOG	Enamel Plus HFO opalescent enamel Gray	5 g
CHFOA	Enamel Plus HFO opalescent enamel Amber	5 g
CHFOBN	Enamel Plus HFO opalescente Blue natural	5 g
CHFIM	Enamel Plus HFO intensive Milky	5 g
CHFIW	Enamel Plus HFO intensive White	5 g
CHFUD1	Enamel plus HFO dentine UD1 (A1)	5 g
CHFUD2	Enamel plus HFO dentine UD2 (A2)	5 g
CHFUD3	Enamel plus HFO dentine UD3 (A3)	5 g
CHFUD3,5	Enamel plus HFO dentine UD3,5 (A3,5)	5 g
CHFUD4	Enamel plus HFO dentine UD4 (A4)	5 g
CHFUD5	Enamel plus HFO dentine UD5	5 g
CHFUD6	Enamel plus HFO dentine UD6	5 g
COSHFOB1	Enamel Plus HFO dentine B1	5 g
COSHFOB2	Enamel Plus HFO dentine B2	5 g
COSHFOB3	Enamel Plus HFO dentine B3	5 g
COSHFOB4	Enamel Plus HFO dentine B4	5 g
COSHFOC1	Enamel Plus HFO dentine C1	5 g
COSHFOC2	Enamel Plus HFO dentine C2	5 g
COSHFOC3	Enamel Plus HFO dentine C3	5 g
COSHFOC4	Enamel Plus HFO dentine C4	5 g
COSHFOD3	Enamel Plus HFO dentine D3	5 g



Ref	Description	Q.ty
CHF15	ENAMEL PLUS HFO Complete Kit including: 15 syringes 5 g with holder 7 dentine: UD1 (A1), UD2 (A2), UD3 (A3), UD3,5 (A3,5), UD4 (A4), UD5, UD6 3 generic enamel: GE1, GE2, GE3 3 opalescent enamel: OBN, OA, OW 2 intensive enamel: White (IW), Milky (IM)	15x5g
CHF7	TRIAL KIT ENAMEL PLUS HFO including: 7 syringes 2,5 g with holder 4 dentine: UD2 (A2), UD3 (A3), UD4 (A4), UD5 2 generic enamel: GE2, GE3 1 opalescent enamel: OBN	7x2,5g
CHF5	KID KIT ENAMEL PLUS HFO including 5 syringes 2,5 g 3 dentine: UD2 (A2), UD3 (A3), UD4 (A4) 2 generic enamel: GE2, GE3	5x2,5g

\*Available also in unidose Tips Kit and 12 pcs refill (Ref. CHFTGE1, CHFT...)

## SYRINGE/TIPS HEATER

### ENA HEAT Composite Heating Conditioner

It warms up the composite at the temperature of approx. 39°C, making the material more flowable and reducing the stress in the extrusion from the syringe and stratification phases. In this way, this reduces the risk of separation between the matrix and filler, it improves the bio-mechanical characteristics of the composite and it avoids bubbles. It is possible to regulate the temperature at 55°C to obtain even more flowable material for cementation. With 6 spaces for syringes and 4 spaces for tips. Also for warming up sodium hypochlorite and anesthetic.



Ref	Description	Q.ty
CHC3	COMPOSITE HEATING CONDITIONER ENA HEAT 110-240V, 50-60 Hz, 500mA Allows to use composite at the ideal temperature of 39°C for modellation and 55°C for cementation	1 pc

# ENAMEL PLUS HFO STAIN & INSTRUMENTS

## Fluorescent Composite Stains

Unique fluorescent stains used for characterization in both the dental practice and laboratory. Due to high fluorescence, they naturally integrate with the natural tooth. Stains can be used alone or mixed with the composite without changing its fluorescent characteristics.



COSSTAINKIT

## MICERIUM BRUSHES FOR COMPOSITE MANIPULATION



Ref	Description	Q.ty
<b>COSSTAINKIT</b>	<b>ENAMEL PLUS HFO STAIN KIT</b> Fluorescent stains in syringe: white, yellow, orange, blue, brown, dark brown Brushes (2 type C - 2 type F - 2 type M)	6x2g 6 pcs
<b>COSSTAIN1N</b>	Stain refill white	2 g
<b>COSSTAIN3N</b>	Stain refill blue	2 g
<b>COSSTAIN4N</b>	Stain refill brown	2 g
<b>COSSTAIN5N</b>	Stain refill dark brown	2 g
<b>COSSTAIN7N</b>	Stain refill yellow	2 g
<b>COSSTAIN8N</b>	Stain refill orange	2 g
<b>COSSTAIN T</b>	Stain refill transparent	2 g
<b>COSSTAIN01</b>	Mixing palette with cover for improving composite modulation	1 pc
<b>COSPEN11</b>	Brush C for stains	1 pc
<b>COSPEN12</b>	Brush F for fossa	1 pc
<b>COSPEN13</b>	Brush M for manipulation	1 pc
<b>TPENS</b>	Silicone white soft brush with small tip for composite handling	5 pcs
<b>TPENN</b>	Silicone black hard brush with small tip for composite handling	5 pcs
<b>TPENMC</b>	Silicone brush blue tip with metal handle 45°/45° sterilizable for composite handling	5 pcs
<b>TPENMS</b>	Silicone brush blue tip with metal handle 90°/180° sterilizable for composite handling	5 pcs
<b>TPENMP</b>	Silicone brush blue tips refill	5 pcs
<b>TLV1</b>	Composite application instrument for anterior including 1 fixed spatula 1 extra flexible grey spatula 1 flexible white spatula	1 pc 1 pc 1 pc
<b>TLV2</b>	Composite application instrument for posterior	1 pc
<b>TRAW</b>	Flexible tip white	2 pcs
<b>TRAG</b>	Ultra flexible tip grey	2 pcs

# ENAMEL PLUS HRi FLOW<sup>HF</sup>

Material to be used in posteriors as cavity liner for direct and indirect restorations (before taking the impression) and in anteriors for class V.

- Highly Filled
- Higher Viscosity & Elasticity
- Higher Radiopacity & High Physical Properties
- No bubbles



## PHYSICAL CHARACTERISTICS

	FILLER (Weight %)	VICKERS HARDNESS MPa	YOUNG MODULUS MPa	FLEXURAL STRENGTH MPa	COMPRESSIVE STRENGTH MPa	RADIOCAPACITY
Flow HF	77	770	13485	148	394	210% Al
Standard Flow	55	350	6000	120	350	30% Al

Ref	Description	Q.ty
<b>CHR1F</b>	<b>ENAMEL PLUS HRi FLOW INTRO KIT</b> Dentine syringe: UD1 (A1), UD2 (A2), UD3 (A3), UD3,5 (A3,5), UD4 (A4), UD5, UD6. Black tips ø 1,2 mm Plexiglass holder	7x2 g  25 pcs 1 pc
<b>CHRFUD0</b>	HRi Flow UDO refill + 3 tips	2 g
<b>CHRFUD0,5</b>	HRi Flow UDO,5 refill + 3 tips	2 g
<b>CHRFUD1</b>	HRi Flow UD1 (A1) refill + 3 tips	2 g

Ref	Description	Q.ty
<b>CHRFUD2</b>	HRi Flow UD2 (A2) refill + 3 tips	2 g
<b>CHRFUD3</b>	HRi Flow UD3 (A3) refill + 3 tips	2 g
<b>CHRFUD3,5</b>	HRi Flow UD3,5 (A3,5) refill + 3 tips	2 g
<b>CHRFUD4</b>	HRi Flow UD4 (A4) refill + 3 tips	2 g
<b>CHRFUD5</b>	HRi Flow UD5 refill + 3 tips	2 g
<b>CHRFUD6</b>	HRi Flow UD6 refill + 3 tips	2 g
<b>CHRF25</b>	Tips 1,2 mm	25 pcs
<b>PLEX11</b>	Plexiglass holder x 11 Flow syringe holes	1 pc

Low viscosity flowable composite



# ENAMEL PLUS HFO FLOW

Ref	Description	Q.ty
<b>CHF1F</b>	<b>ENAMEL PLUS HFO FLOW INTRO KIT</b> Dentine syringe: UD1 (A1), UD2 (A2), UD3 (A3), UD3,5 (A3,5), UD4 (A4), UD5, UD6. Black tips ø 1,2 mm Plexiglass holder	7x2 g  25 pcs 1 pc
<b>CHFFUD1</b>	HFO Flow UD1 (A1) refill + 3 tips	2 g
<b>CHFFUD2</b>	HFO Flow UD2 (A2) refill + 3 tips	2 g
<b>CHFFUD3</b>	HFO Flow UD3 (A3) refill + 3 tips	2 g
<b>CHFFUD3,5</b>	HFO Flow UD3,5 (A3,5) refill + 3 tips	2 g
<b>CHFFUD4</b>	HFO Flow UD4 (A4) refill + 3 tips	2 g
<b>CHFFUD5</b>	HFO Flow UD5 refill + 3 tips	2 g
<b>CHFFUD6</b>	HFO Flow UD6 refill + 3 tips	2 g
<b>COSHF3</b>	HFO Flow B3 refill + 3 tips	2 g
<b>COSHF4</b>	HFO Flow B4 refill + 3 tips	2 g
<b>CHFF25</b>	Black tips ø 0,8 mm	25 pcs

Highly flowable body with high elasticity and calibrated light diffusion that reproduces protein layer of natural tooth

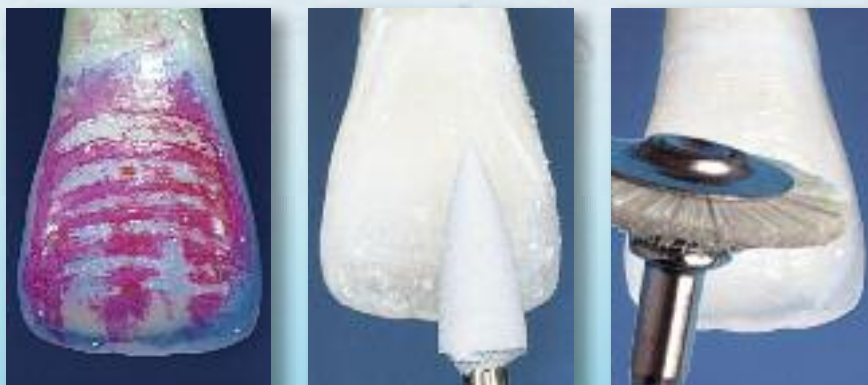
- Increases the internal light diffusion in direct and indirect restorations, reducing the decrease in value typical of the vitreous masses (not need with HRi Universal Enamel)
- Increases the dentine fluorescence of non vital teeth.

## GLASS CONNECTOR



Ref	Description	Q.ty
<b>COSHFOFGC</b>	Enamel plus HFO Glass Connector + 3 tips	1 g

# Shiny



## Correction of surface tooth geography

Finishing and polishing with rubber point Shiny13, diamond paste Shiny A 3 $\mu$  and Shiny B 1 $\mu$  and with brushes

Micerium provides everything needed for finishing and polishing of direct aesthetic restorations, laboratory veneers, inlays and crowns made in composite. Discs, burs, felt wheels, brushes and small accessories are manufactured by Micerium.

### THE SYSTEM INCLUDES

- Diamond paste: SHINY A 3  $\mu$ , SHINY B 1  $\mu$
- Aluminium oxide paste SHINY C
- Air Block SHINY G
- Brushes and felts SHINY S, SHINY F
- Pre-polishing rubber point SHINY13 & SHINY33
- Finishing accessories

### SURFACE TREATMENT

	Vickers Hardness	Deviat.
Enamel plus HRi microhybrid	55	1,2
HRi microhybrid (a.b.+d.p.)	+10%	0,8
Microfill	18-30	4

**Surface treatment:** Vickers hardness and its deviation from standard values (a.b.=Air Block • d.p.= Diamond Paste).





# ENAMEL PLUS SHINY KIT



Aluminium oxide paste Shiny C with felt wheel; restoration finished and polished under direct light (left) and under polarized light (right)



Ref	Description	Q.ty
<b>COSSHINYKIT</b>	<b>SHINY FINISHING KIT</b>	
	Diamond paste SHINY A 3 micron	2 g
	Diamond paste SHINY B 1 micron	2 g
	Shiny paste SHINY C	35 g
	Air Block SHINY G	7 tips
	SHINY Burs	4 pcs
	Goat hair brushes RA Shiny S	3 pcs
	Varnish SHINY	3 ml
	SHINY 4... brush for posterior	3 pcs
	SHINY Strips (diamond 5...)	4 pcs
	SHINY Strips (paper M...)	16 pcs
	SHINY Discs	12 pcs
	Felt disc SHINY FD	5 pcs
	Felt wheel SHINY F	5 pcs
	Rubber point SHINY 14	2 pcs
	Mandrel RA	2 pcs
	Disposable brushes	10 pcs
	Handle for brushes	1 pc



<b>COSSHINY+G</b>	<b>POLISHING PASTE SHINY KIT</b>	
	Diamond paste SHINY A 3 micron	2 g
	Diamond paste SHINY B 1 micron	2 g
	Shiny paste SHINY C	35 g
	Goat hair brushes RA Shiny S	3 pcs
	Felt disc SHINY FD	3 pcs
	Felt wheel SHINY F	3 pcs
	Mandrel RA	1 pc
	Air Block SHINY G	2 tips
	Rubber point SHINY 14	1 pc
	SHINY 4... brush for posterior	2 pcs
	SHINY Strips (diamond 5...)	4 pcs
	SHINY Strips (paper M...)	4 pcs



<b>COSSHINY-Y+G</b>	<b>POLISHING PASTE SHINY MINI KIT</b>	
	Diamond paste SHINY A 3 micron	0,5 g
	Diamond paste SHINY B 1 micron	0,5 g
	Shiny paste SHINY C	4 g
	Goat hair brushes RA Shiny S	2 pcs
	Mandrel RA	1 pc
	Felt wheel SHINY F	2 pcs
	Rubber point SHINY 14	1 pc
	Air Block SHINY G	2 tips
	SHINY 4... brush for posterior	1 pc
	SHINY Strips (diamond 5...)	2 pcs
	SHINY Strips (paper M...)	2 pcs

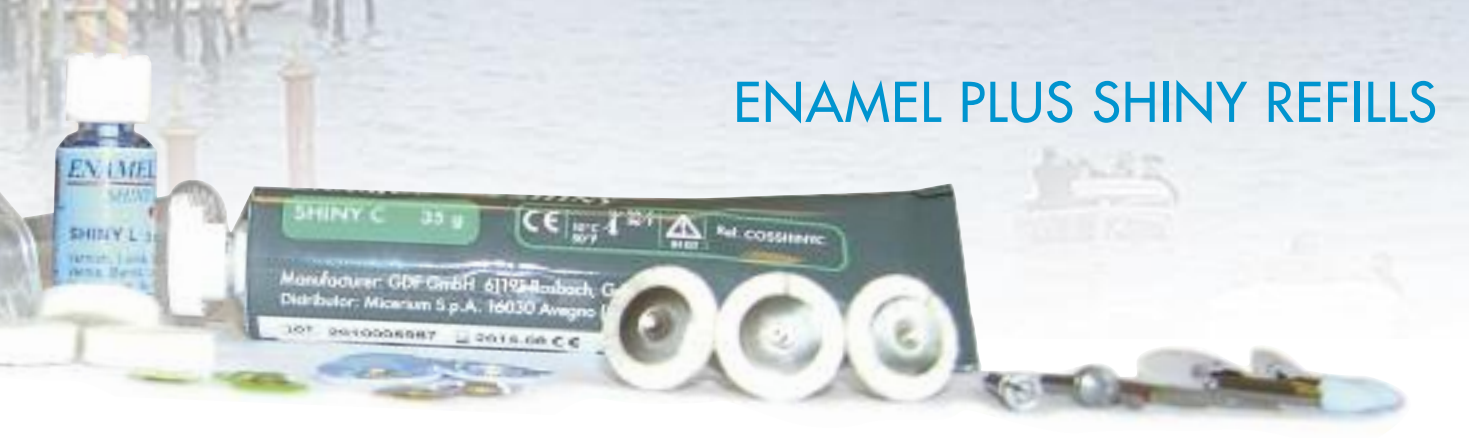
<b>TSY</b>	<b>FINISHING SHINY KIT FOR LABORATORY</b>	
	Paste SHINY A	0,5 g
	Paste SHINY B	0,5 g
	Paste SHINY C	4 g
	Tip Glycerine	1 pc
	Paper cone with mandrel	1 pc
	Goat brush Shiny S-HP	1 pc
	Felt Shiny F-HP	1 pc
	Carbide Bur FG	1 pc
	Green carborundum bur HP	1 pc
	Diamond bur HP (D717-D725-D727)	3 pcs
	Diamond disc 2 sides 0,15mm D751	1 pc

## ENAMEL PLUS SHINY REFILLS

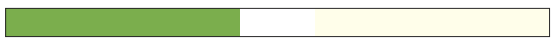
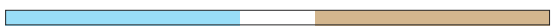
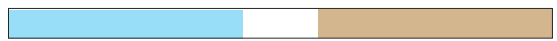
Ref	Description	Q.ty
COSSHINYG7	SHINY G glycerine Air Block in tips 0,3 g	7 pcs
COSSHINYG	SHINY G glycerine Air Block in syringe	2 g
COSSHINYG10	SHINY G glycerine Air Block in syringe	10 g
COSSHINYL2	SHINY L marking varnish for micro-macro geography	3 ml
COSSHINYA	SHINY A 3 micron Diamond paste for pre-polishing to be used with Shiny S	2 g
COSSHINYB	SHINY B 1 micron Diamond paste for polishing to be used with Shiny S	2 g
COSSHINYC	SHINY C aluminium oxide paste for shiny to be used with Shiny F	35 g
COSSHINYS	SHINY S goat brush wheel RA	12 pcs
COSSHINYSHP	SHINY S goat brush wheel HP	12 pcs
COSSHINYF	SHINY F felt wheel 2 mm to be used with COSSHINY6	30 pcs
COSSHINYFD	SHINY FD interproximal felt disc 0,5 mm	100 pcs
COSSHINYFHP	SHINY FHP felt wheel	12 pcs
COSSHINY13	SHINY rubber points for pre-polishing	12 pcs
COSSHINY33	SHINY brown rubber points	12 pcs
CS014	SHINY14 Diamond Rubber for pre-polishing composite	6 pcs
CS015	SHINY15 Diamond Rubber for polishing composite	3 pcs
CS041	SHINY41 Impregnated Brush for posterior "Point"	6 pcs
CS042	SHINY42 Impregnated Brush for posterior "Mini Cup"	6 pcs
CS043	SHINY43 Impregnated Brush for posterior "Cup"	6 pcs



# ENAMEL PLUS SHINY REFILLS

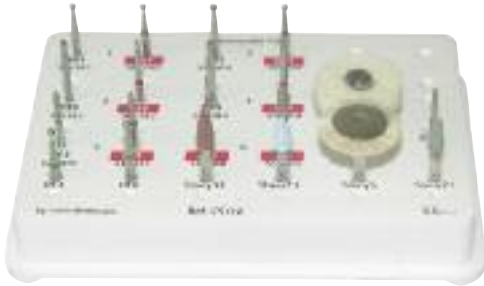


Ref	Description	Q.ty
COSSHINYCON	Paper cones HP	25 pcs
COSSHINYCONM	Mandrel for paper cones Shiny	1 pc
COSSHINY6	SHINY Mandrel for felt wheels	6 pcs
COSSHINYFM	SHINY Mandrel for discs	1 pc
COSSHINYDF	SHINY DISCS extra fine brown grain	100 pcs
COSSHINYDX	SHINY DISCS fine blue grain	100 pcs
COSSHINYDM	SHINY DISCS medium green grain	100 pcs
COSSHINYDC	SHINY DISCS coarse ivory grain	100 pcs
COSSHINYSF	SHINY STRIPS fine (blue) extrafine (brown) grain	100 pcs
COSSHINYSF5	SHINY STRIPS fine-extra fine narrow grain	100 pcs
COSSHINYSM	SHINY STRIPS medium (green) coarse (ivory) grain	100 pcs
COSSHINYSMS	SHINY STRIPS medium-coarse narrow grain	100 pcs
COSSHINY1	Handle for brushes	1 pc
COSSHINY50	Refill brushes	50 pcs
COSSHINY25	Tips ø 0,9 mm for Glycerine & Flow	25 pcs
CS050-2R	Diamond strips 12mm x 2mm fine red	5 pcs
CS050-2Y	Diamond strips 12mm x 2mm fine yellow	5 pcs
CS050-4R	Diamond strips 12mm x 4mm fine red	5 pcs
CS050-4Y	Diamond strips 12mm x 4mm fine yellow	5 pcs



# ENA SHINY BUR KITS by DR. LORENZO VANINI

## BUR KIT ANTERIOR DIRECT COMPOSITE



Ref	Description	Q.ty
<b>CS1LV</b>	<b>Preparation Finishing &amp; Polishing Kit anterior direct composite</b>	
	Diamond Burs Shiny FG	12 pcs
	Round Carbide Bur Shiny RA	2 pcs
	30 blades Carbide Bur FG	1 pc
	Carborundum mounted point RA (CS21)	1 pc
	Brown & blue rubber points Shiny RA	2 pcs
	Goat hair brush RA	1 pc
	Felt wheel RA	1 pc
	Polishing pastes Shiny A, B, C, G	

## BUR KIT POSTERIOR DIRECT & INDIRECT COMPOSITE



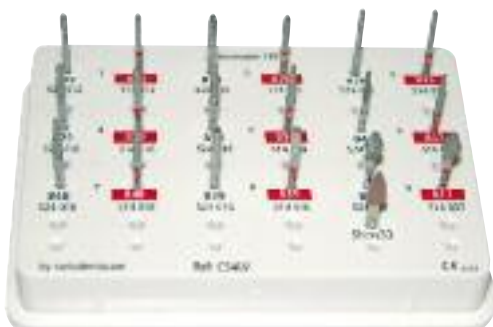
Ref	Description	Q.ty
<b>CS2LV</b>	<b>Preparation Finishing &amp; Polishing Kit posterior direct &amp; indirect composite</b>	
	Diamond Burs Shiny FG	16 pcs
	Round Carbide Bur Shiny RA	2 pcs
	Brown & blue rubber points Shiny RA	2 pcs
	Goat hair brush RA	1 pc
	Felt wheel RA	1 pc
	Polishing pastes Shiny A, B, C, G	

## BUR KIT COMPOSITE & CERAMIC METAL FREE



Ref	Description	Q.ty
<b>CS3LV</b>	<b>Preparation &amp; Finishing Kit veneer and metal free crown in composite and ceramic</b>	
	Diamond Burs Shiny FG	12 pcs
	Brown rubber point Shiny RA	1 pc

## BUR KIT 50°-90° METAL CROWN



Ref	Description	Q.ty
<b>CS4LV</b>	<b>Preparation &amp; Finishing Kit 50° &amp; 90° metal crown</b>	
	Diamond Burs Shiny FG	18 pcs
	Brown rubber point RA	1 pc

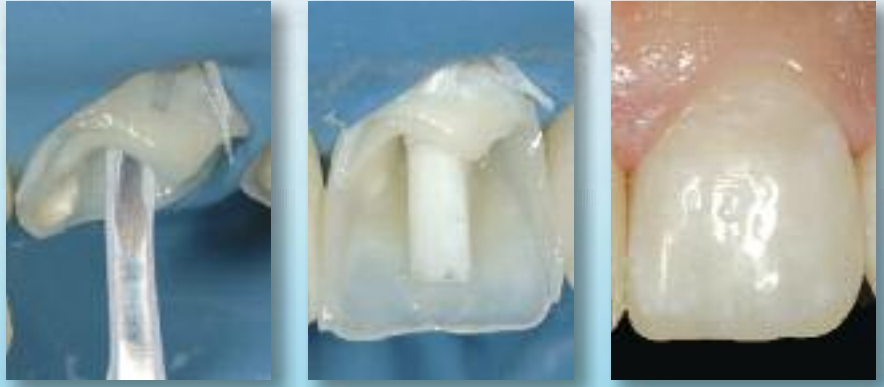
# ENA SHINY REFILLS

## CONTENTS KIT

Diamond Fine Grain ●	Diamond Medium Grain ○	Shape	Q.ty	CS1LV	CS2LV	CS3LV	CS4LV
CS368514025	CS368524025		3 pcs	●	● ○	● ○	
CS390514014			3 pcs		●		
CS801514012	CS801524012		3 pcs	● ○		● ○	
CS801514014	CS801524014		3 pcs	● ○			
CS801514016	CS801524016		3 pcs			● ○	
CS811514037	CS811524037		3 pcs		● ○		● ○
CS839514012	CS839524012		3 pcs	● ○			
CS839514014	CS839524014		3 pcs	● ○			
CS839514016	CS839524016		3 pcs				● ○
CS845R514012	CS845R524012		3 pcs		● ○		
CS846R514014	CS846R524014		3 pcs		● ○		
CS847514016	CS847524016		3 pcs				● ○
CS847R514014	CS847R524014		3 pcs		● ○		
CS847R514016	CS847R524016		3 pcs			● ○	
CS847R514021	CS847R524021		3 pcs		● ○		
CS848514012	CS848524012		3 pcs			● ○	
CS848514018	CS848524018		3 pcs				● ○
CS850514016	CS850524016		3 pcs			● ○	
CS850514018	CS850524018		3 pcs				● ○
CS853514008			3 pcs	●	●		
CS859514012	CS859524012		3 pcs		● ○		
CS861514012	CS861524012		3 pcs	● ○			
CS878514012	CS878524012		3 pcs				● ○
CS878514016	CS878524016		3 pcs				● ○
CS879514012	CS879524012		3 pcs				● ○
CS879514016	CS879524016		3 pcs				● ○
Carbide Bur	CS1S014		3 pcs	●	●		
Carbide Bur	CS1S018		3 pcs	●	●		
Carbide Bur	CS9904		3 pcs	●			
Rubber point, brushes, felt and carborundum stone							

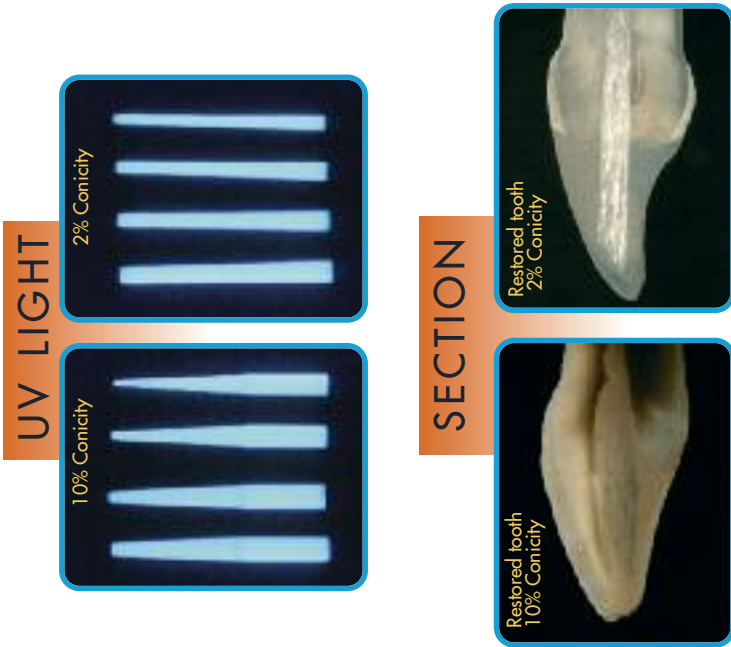
Fine Grain 40 μ ○ Medium Grain 80-100 μ ● Carbide bur ● Carborundum ● Shiny13 ● Shiny33 ○ ShinyS ○ ShinyF

# EnaPost



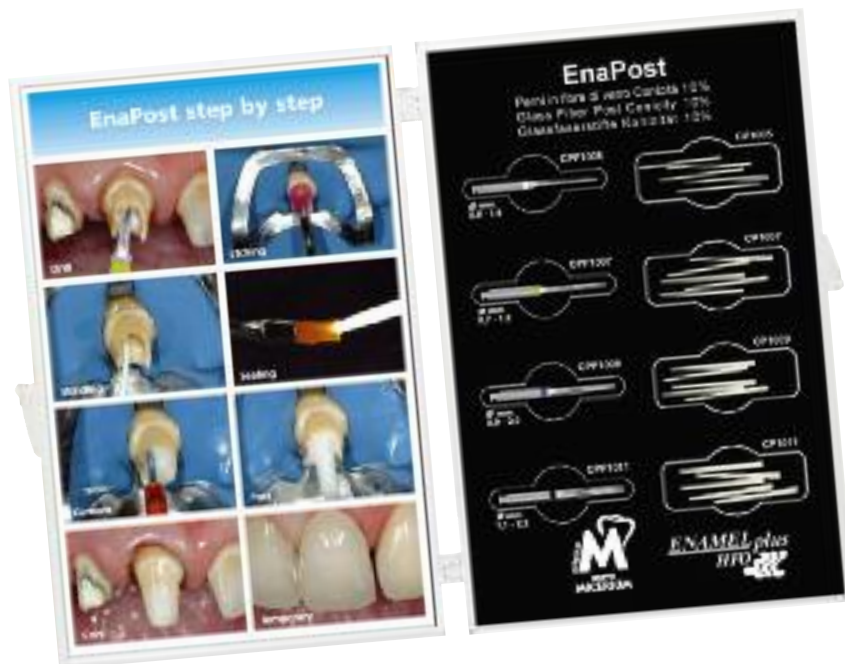
Perfect integration, functional and aesthetics with glass fiber post and composite

Restoration made by Dr. Lorenzo Vanini



## TECHNOLOGICAL & OPERATING ADVANTAGES

- Aesthetic: fluorescent and dentine colour
- Functional: same elasticity of dentine
- Perfectly integrated with the tooth, cement and restorative material
- The only post with silanized fibers inserted in the same resin of restorative material (Enamel plus HRi)
- Perfect silanization
- Visible on X-ray only





Ref	Description	Q.ty
<b>CP0200</b>	<b>AESTHETIC POST KIT ENAPOST 2% CONICITY:</b> Ena Post Fiber Post ø 0,8 - 1,25 mm Ena Post Fiber Post ø 1,0 - 1,45 mm Ena Post Fiber Post ø 1,2 - 1,65 mm Ena Post Fiber Post ø 1,4 - 1,88 mm Ena Post drill 1 x each size	5 pcs 5 pcs 5 pcs 5 pcs 4 pcs
<b>CP0208</b>	Ena Post Fiber Post ø 0,8 - 1,25 mm	10 pcs
<b>CP0210</b>	Ena Post Fiber Post ø 1,0 - 1,45 mm	10 pcs
<b>CP0212</b>	Ena Post Fiber Post ø 1,2 - 1,65 mm	10 pcs
<b>CP0214</b>	Ena Post Fiber Post ø 1,4 - 1,88 mm	10 pcs
<b>CP0208-30</b>	Ena Post Fiber Post ø 0,8 - 1,25 mm	30 pcs
<b>CP0210-30</b>	Ena Post Fiber Post ø 1,0 - 1,45 mm	30 pcs
<b>CP0212-30</b>	Ena Post Fiber Post ø 1,2 - 1,65 mm	30 pcs
<b>CP0214-30</b>	Ena Post Fiber Post ø 1,4 - 1,88 mm	30 pcs
<b>CPF0208</b>	Ena Post white ring drill ø 0,8 - 1,25 mm	1 pc
<b>CPF0210</b>	Ena Post yellow ring drill ø 1,0 - 1,45 mm	1 pc
<b>CPF0212</b>	Ena Post blue ring drill ø 1,2 - 1,65 mm	1 pc
<b>CPF0214</b>	Ena Post black ring drill ø 1,4 - 1,88 mm	1 pc

Ref	Description	Q.ty
<b>CP1000</b>	<b>AESTHETIC POST KIT ENAPOST 10% CONICITY:</b> Ena Post Fiber Post ø 0,5 - 1,6 mm Ena Post Fiber Post ø 0,7 - 1,8 mm Ena Post Fiber Post ø 0,9 - 2,0 mm Ena Post Fiber Post ø 1,1 - 2,2 mm Ena Post drill 1 x each size	5 pcs 5 pcs 5 pcs 5 pcs 4 pcs
<b>CP1005</b>	Ena Post Fiber Post ø 0,5 - 1,6 mm	10 pcs
<b>CP1007</b>	Ena Post Fiber Post ø 0,7 - 1,8 mm	10 pcs
<b>CP1009</b>	Ena Post Fiber Post ø 0,9 - 2,0 mm	10 pcs
<b>CP1011</b>	Ena Post Fiber Post ø 1,1 - 2,2 mm	10 pcs
<b>CP1005-30</b>	Ena Post Fiber Post ø 0,5 - 1,6 mm	30 pcs
<b>CP1007-30</b>	Ena Post Fiber Post ø 0,7 - 1,8 mm	30 pcs
<b>CP1009-30</b>	Ena Post Fiber Post ø 0,9 - 2,0 mm	30 pcs
<b>CP1011-30</b>	Ena Post Fiber Post ø 1,1 - 2,2 mm	30 pcs
<b>CPF1005</b>	Ena Post drill (1 mark) ø 0,5 - 1,6 mm	1 pc
<b>CPF1007</b>	Ena Post drill (2 marks) ø 0,7 - 1,8 mm	1 pc
<b>CPF1009</b>	Ena Post drill (3 marks) ø 0,9 - 2,0 mm	1 pc
<b>CPF1011</b>	Ena Post drill (4 marks) ø 1,1 - 2,2 mm	1 pc

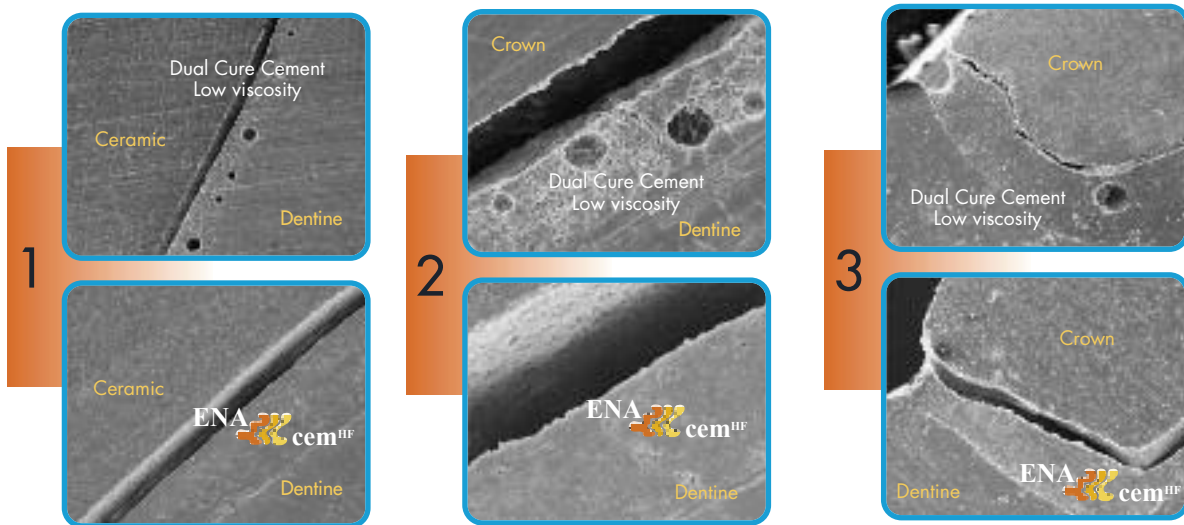
# Ena Cem<sup>HF</sup>



Perfect biocompatibility ...compared with cementation with traditional technique and Ena Cem HF...

## ANALYSIS UNDER MAGNIFICATION

Images under magnification show homogeneity of Ena Cem HF unlike other Low Viscosity Dual Cure Cement that contains air bubbles



### OPERATING ADVANTAGES

- Highly filled (77% in weight)
- Same physical characteristics as Enamel Plus HRi
- No air bubbles
- Minimum thickness <50µm
- Fluorescent and radiopaque (210%Al)

### TECHNOLOGICAL ADVANTAGES

- Crown & bridge luting
- Post luting & core build-up
- Composite and ceramic veneers, inlay and onlay luting





Perfect canal sealing (Ena Post 10%)  
with Ena Cem<sup>HF</sup>

PHYSICAL CHARACTERISTICS

PRODUCT	THICKNESS μj (FORCE 35N)	VICKERS HARDNESS MPa	YOUNG MODULUS MPa	FLEXURAL STRENGTH MPa	COMPRESSIVE STRENGTH MPa	RADIOPACITY
Ena Cem HF	45	670	12850	116	342	210% Al
Cement-Flow dual/light curing.	28/55	270	5471	88	216	30% Al
High viscosity composite	> 500	600/700	8000/11000	140	400	



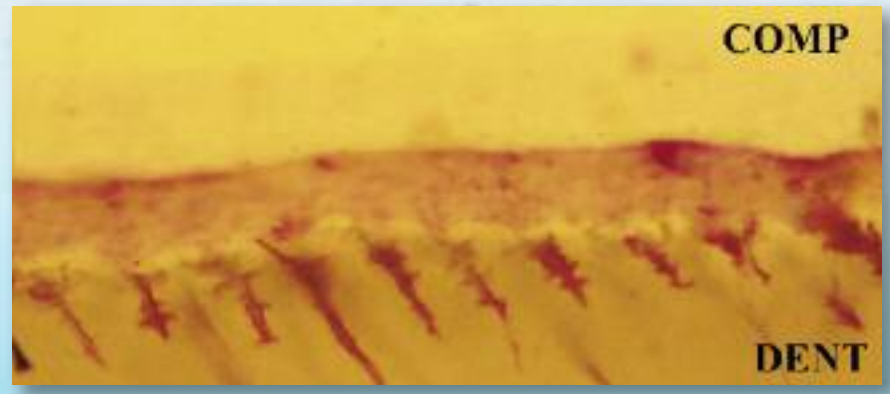
Ref	Description	Q.ty
<b>CPCK</b>	<b>ENA CEM HF HIGHLY FILLED</b> Dual cement Intro Kit: Ena Cem HF shades UD1-UD2-UD3-UD4 Ena-bond Bonding Ena-bond Bonding catalyst Ena-Etch Etching Gel 37% Automix Tips + Intraoral tips Orange applicators with plug	4x3 g 2 ml 2 ml 2 ml
<b>CPCUD1</b>	Ena Cem HF UD1 automix syringe	8 g
<b>CPCUD2</b>	Ena Cem HF UD2 automix syringe	8 g
<b>CPCUD3</b>	Ena Cem HF UD3 automix syringe	8 g
<b>CPCUD4</b>	Ena Cem HF UD4 automix syringe	8 g
<b>CPCTIPN</b>	Automix tips Ena Cem	50 pcs
<b>CPCTIPL</b>	Intraoral white tips Ena Cem	25 pcs
<b>COSM3A</b>	Orange applicators with plug	50 pcs

Ref	Description	Q.ty
<b>CPCTK</b>	<b>ENA CEM TRY-IN KIT</b> Ena Cem TRY-IN shade UD1 Ena Cem TRY-IN shade UD2 Ena Cem TRY-IN shade UD3 Ena Cem TRY-IN shade UD4 Applicator tips CHFF25	2 g 2 g 2 g 2 g 25 pcs
<b>CPCTUD1</b>	Ena Cem TRY-IN shade UD1	2 g
<b>CPCTUD2</b>	Ena Cem TRY-IN shade UD2	2 g
<b>CPCTUD3</b>	Ena Cem TRY-IN shade UD3	2 g
<b>CPCTUD4</b>	Ena Cem TRY-IN shade UD4	2 g

Ref	Description	Q.ty
<b>CPC</b>	<b>ENA CEM LOW VISCOSITY</b> Dual low viscosity cement	8 g

# ENA BOND SINGLE COMPONENT BONDING

# Ena Bond

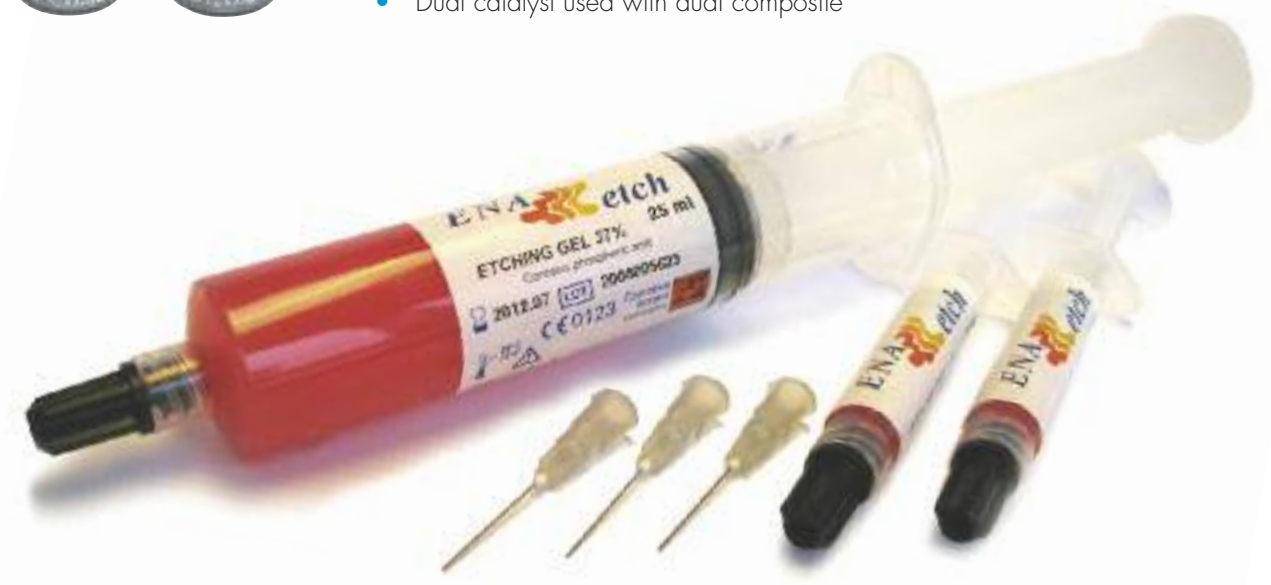


HFO/Dentine restoration using Ena Bond with LaserScan microscope Zeiss 500x.  
 Histological pigmentation put in evidence hybrid layer and "resin-tags" that guarantee a perfect seal and adhesion (Dr. Francesco Mangani).



### CHARACTERISTICS

- Aesthetics & Retention
- Fluorescent as natural tooth
- Bond strenght values over the average industry: 30 Mpa
- Eithanol based special composition
- Dual catalyst used with dual composite



Ref	Description	Q.ty
<b>COSM300</b>	ENA BOND SINGLE COMPONENT BONDING Ena Bond light curing bonding Phosphoric acid 37% Accessories	5 ml 2 ml
<b>COSM300A</b>	Ena Bond light curing bonding	5 ml
<b>COSM300D</b>	Ena Bond Catalyst makes bonding dual	5 ml
<b>COSM3B</b>	Mixing base	20 pcs

Ref	Description	Q.ty
<b>COSM101B</b>	ENA ETCH Phosphoric acid 37% without silicon bulk syringe usable with 2ml rechargeable syringes	1x25ml 2x2 ml
<b>COSM101</b>	Phosphoric acid 37% without silicon	2x2ml
<b>COSM3S</b>	Ena Bond applicators: small ivory	50 pcs
<b>COSM3M</b>	Ena Bond applicators: medium blue	50 pcs



## Rock Bond: IV Generation Dual component Adhesive System

Enamel-dentine adhesive system of high performances with Primer made by 2 components and Adhesive Resin. After the 2 components have been mixed and the surface has been treated with the Primer, a good enamel-dentine bonding will be granted, also if the surface is not completely dry (unlike one component primer).



# Rock Bond

Ref	Description	Q.ty
<b>COSM100</b>	<b>MICERUM ROCK BOND ADHESIVE SYSTEM</b>	
	Primer A	10 ml
	Primer B	10 ml
	Adhesive resin	10 ml
	Phosphoric acid gel 37%	2 ml
<b>COSM102</b>	Rock Bond adhesive resin	10 ml
<b>COSM103</b>	Rock Bond primer A	10 ml
<b>COSM104</b>	Rock Bond primer B	10 ml

## ENA SEAL

### Low viscosity light curing sealant

- Composite surface sealant
- Composite restoration margin sealant
- Conditioner for composite surfaces and for composite application brushes (do not use with new HRi Universal Enamel)
- Acrylic temporary sealant

Ref	Description	Q.ty
<b>COSZ100</b>	<b>ENA SEAL SEALANT</b>	
	Ena Seal light curing sealant	5 ml
	Phosphoric acid 37%	2 ml
	Accessories	
<b>COSZ10</b>	Ena Seal light curing sealant	5 ml



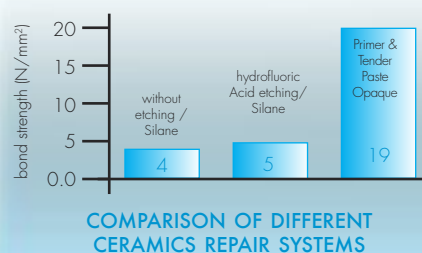
## TENDER REPAIR

### Ceramic repair without acid

- Higher Biocompatibility
- No risks for tissue
- Higher adhesion



Ref	Description	Q.ty
<b>COSRIP1</b>	<b>TENDER REPAIR KIT ceramic &amp; metal</b> Tender Bond metal ceramic primer Tender paste Opaque Light for metal Tender paste Opaque Clear for ceramic Enamel Plus M brush	2,5 ml 3 g 3 g 1 pc
<b>COSRIP2</b>	<b>TENDER REPAIR KIT ceramic</b> Tender Bond metal ceramic primer Tender paste Opaque Clear for ceramic Enamel Plus M brush	2,5 ml 3 g 1 pc
<b>ETBOND</b>	Tender metal primer ceramic	5 ml
<b>ETOL</b>	Tender paste Opaque Light for metal	3 g
<b>ETOCLEAR</b>	Tender paste Opaque Clear for ceramic	3 g



## ENA ETCH REPAIR

### Ceramic repair

with hydrofluoric acid and silane



Ref	Description	Q.ty
<b>COSM661</b>	<b>MICERIUM CERAMIC REPAIR KIT</b> Protective varnish Hydrofluoric acid 9,6% for ceramic Silane	3 ml 3 ml 3 ml
<b>COSZ15</b>	Hydrofluoric acid 9,6% for ceramic	3 ml
<b>COSZ25</b>	Silane Porcelain Primer	3 ml
<b>COSSHINYL2</b>	Protective varnish	3 ml
<b>COSM3T</b>	Tips for acid syringe	25 pcs

## Preimpregnated Glass Fiber

Impregnated in light cured fluorescent resin, the same used for Enamel plus HRi and Ena Post

### TECHNOLOGICAL ADVANTAGES

Fibres are impregnated and also silanized; filler 0,012 µm:

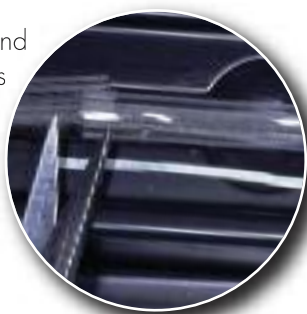
- Unidirectional single roads of glass fiber 14 µm
- Very strong resistance to acid and alkaline media
- Higher resistance of finished product
- Stronger chemical connection between fibers
- Increased physical properties

### OPERATING ADVANTAGES

- Oral application without metal
- Ultraconservative, easy to repair
- Usable with most acrylics and composites
- No additional investment required
- Ready to use, fast application, reduced costs of treatment, no risk of fraying, during application in the time
- Better chemical reaction with luting and restorative materials and excellent aesthetics

### Special packaging:

- Fiber holder in silicone to be used for an easy application: measure, cut, apply, cure and check



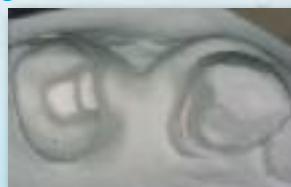
## Polyethylene Fibers

Made with high molecular weight polyethylene and surface treated to achieve bonding capability that increases resin adhesion.

Improve physical properties of acrylic removable, orthodontic temporary and prosthodontic appliances. Suitable also for repair.

Ref	Description	Q.ty
TF21	TENDER FIBER DUE Glass fiber for periodontal splinting Length 12 cm - ø 1,3 mm (3.200 fibers)	1 pc
TF41	TENDER FIBER QUATTRO Glass fiber for acrylic & composite prosthetic reinforcement. Length 12 cm - ø 1,7 mm (6.400 fibers)	1 pc
TFZ	Tender Fiber Special Scissors	1 pc

## QUATTRO



Tender Fiber QUATTRO prosthetic reinforcement for adhesive (Maryland) bridges or inlay (Clinical images courtesy Mr. Daniele Rondoni)



Tender Fiber QUATTRO prosthetic reinforcement for composite and implant resin (Clinical images courtesy Dr. Tiziano Testori)

## DUE



Periodontal splinting with Tender Fiber DUE (Clinical images courtesy Dr. Luca Pinoli)

## ZERO



Polyethylene Fiber Tender Fiber ZERO for removable prosthesis reinforcement (Clinical images courtesy Mr. Daniele Rondoni)



Ref	Description	Q.ty
TF01	TENDER FIBER ZERO Polyethylene fiber economic, not impregnated for reinforcement of orthodontic, temporary & removable acrylic prosthesis	17 mt

# Ena White



## Ena White Bleaching System

Vital tooth bleached with Ena White Power 35% hydrogen peroxide

### ENA WHITE POWER

- 35% Hydrogen peroxide for in office bleaching
- Results in one visit
- Bicomponent syringe activates only the needed quantity for the application
- Neutral Ph 7.3, no enamel damage
- Use with rubber dam or light curing gingival protection Ena White Dam



### ENA WHITE REGULAR

- 12% Hydrogen peroxide in office bleaching
- Bleaching of non-vital teeth with the walking bleaching technique
- Safe and effective bleaching for sensitive teeth



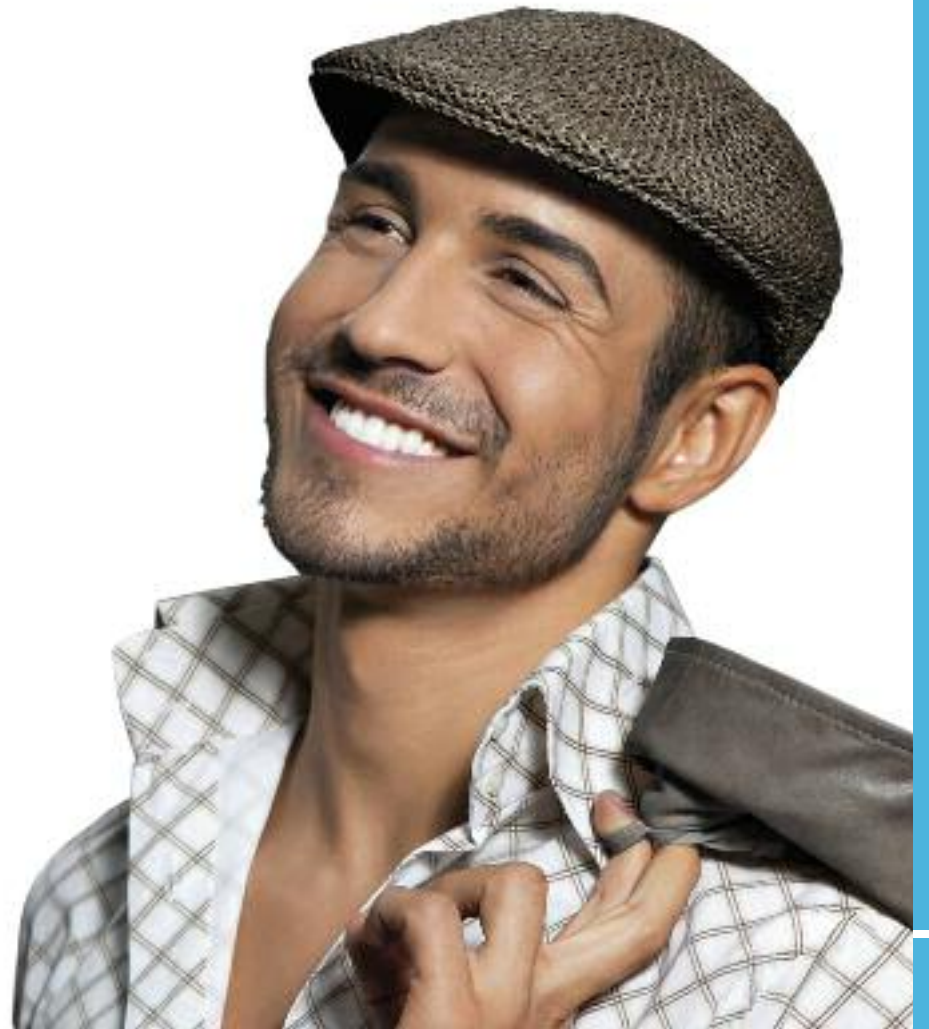
### ENA WHITE LIGHT

- 6% Hydrogen peroxide for home bleaching
- Home treatment, simple and safe maintenance
- Package with personalized label
- Pleasant freshness: mint flavour!





Ref	Description	Q.ty
<b>COSM035K</b>	<b>ENAWHITE COMPLETE BLEACHING KIT</b> Ena White Power 35% Ena White Regular 12% Ena White Home Light 6% Ena Dam gingival protection Ena White Block-out Ena White Desensitizer Bleaching tray sheets Pocket tray cases Cheek expander with tongue retractor	5 g 2ml 3ml 1,5 g 3 ml 1,2 ml 2 pcs 2 pcs 1 pc
<b>COSM035E</b>	<b>ENA WHITE POWER KIT</b> 35% Hydrogen peroxide bleaching gel Ena Dam paste	5g 1,5g
<b>COSM035</b>	<b>ENA WHITE POWER REFILLS</b> 35% Hydrogen peroxide bleaching gel	2 x 5 g
<b>COSM035T</b>	Ena White automixing tips	50 pcs
<b>COSM012</b>	<b>ENA WHITE REGULAR ENDO REFILLS</b> 12% Hydrogen peroxide bleaching gel	2 x 2 ml
<b>COSM015</b>	<b>ENA WHITE LIGHT HOME</b> 6% Hydrogen peroxide bleaching gel	4 x 3 ml
<b>COSM015B</b>	<b>ENA WHITE LIGHT HOME</b> 6% Hydrogen peroxide bleaching gel Bleaching Tray box	2 x 3 ml 1 pc
<b>COSM03B</b>	ENA DAM gingival protection	4 g
<b>COSM05S</b>	ENA WHITE Desensitizer	2x1,2 ml
<b>COSM05B</b>	ENA WHITE block-out	3 ml
<b>COSMT10</b>	Bleaching tray sheets	10 pcs



## Temp



Temporary resin for aesthetic temporary crown and bridge

Material very interesting for opacity and fluorescence of dentine bodies and for translucency of enamel bodies that allow to put in evidence the typical contrast between these two elements in the natural tooth. Enamel bodies also allow to obtain a natural polishing in temporary crowns, similar to the definitive ceramic elements. It can be used both in laboratory with the help of silicone stent or of vacuum forming matrix with the direct technique using a silicone impression or a preformed crown.

DIRECT  
TECHNIQUE

Teeth before the preparation



Dentine placed into the impression



Cemented and finished temporary

LABORATORY  
TECHNIQUE

Stent and dentine pouring



Characterizations with stains and clear



Enamel pouring and final polishing



## Temp Colour System

characterization system developed by Mr. Oliviero Turillazzi



New fluorescent colours

for packages see section Laboratory page 46-47





ENA SOFT is an elastic material for temporary restorations. It has advantages of easy removal in one piece without damage to preparation.

ENA SOFT is suitable also for long term temporaries because it perfectly maintains the shape of tooth.

### TECHNOLOGICAL & OPERATIVE ADVANTAGES

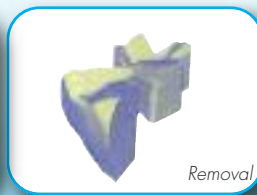
- simple to apply: not sticky
- easy to remove in one piece
- suitable for inlay & onlay
- strong and long lasting fillings
- easy to remove from implant screws

Ref	Description	Q.ty
EHTS2	Ena Soft Dentine Colour	5 g

### ENA SOFT



Application



Removal



Fillings for implant screw

Temporary fillings for inlay & onlay

## KIT MOCK UP

For temporary veneers



### TEMPORARY IN 5 MINUTES:

- impression with silicone and clear tray 45 sec
- impression setting 1 min. 30 sec.
- veneer preparation
- Flow HRi application in stent 30 sec.
- light curing 60 sec.
- final light curing with enaseal 60 sec.

Ref	Description	Q.ty
TEMPSMU	KIT MOCK UP	
	Temp Silic Transparent Silicone for dentist	2x50 ml
	Auto Mixing Tips	8 pcs
	Anterior Transparent Tray	2 pcs
	Full Arch Upper Transparent Tray	2 pcs
	Full Arch Lower Transparent Tray	2 pcs
	Flow HRi	3x2 g
	Ena Seal	2 ml

Ref	Description	Q.ty
TS1	Transparent Silicone for dentist	50 ml
TS1-5	Transparent Silicone for dentist	5x50 ml
TSPA	Anterior Transparent Tray	25 pcs
TSPL	Full Arch Lower Transparent Tray	25 pcs
TSPS	Full Arch Upper Transparent Tray	25 pcs

# Laboratory

IN  
ZEN  
E  
L  
L  
E  
L  
L  
E





# Laboratory

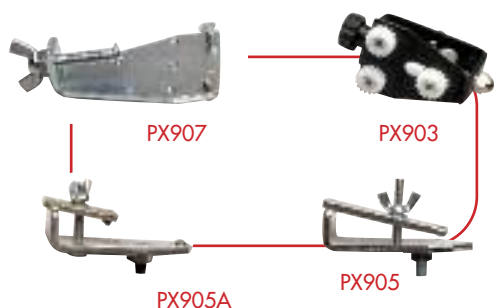
- 36 Router & Electric Saw
- 37 Die Treatment & pattern resin
- 38 Wax
- 39 Instruments
- 40 Alloy and Investment
- 41 Vacumix - Light Curing Units
- 42 Enamel plus Tender composite
- 46 Resin

# PRECISION CUTTING: PX901

Easier, faster and safer

### TECHNICAL FEATURES

Voltage	220-230V, 50 Hz,
Absorption	100W (PX901B 200W)
Base	210x400 mm
Height	260 mm
Weight	11 Kg. PX901B (8,5 Kg. PX901)
Blade	80x16x0,2 mm
Thickness	0,2 mm



Ref	Description	Q.ty
<b>PX901</b>	<b>ELECTRIC SAW FOR REMOVABLE DIES</b> with modelholder and adjustable base	1 pc
<b>ASX1000</b>	external exauster for saw and router	1 pc
<b>PX903</b>	Modelholder for Accutrac	1 pc
<b>PX904</b>	Blade	1 pc
<b>PX905</b>	Modelholder for Tricodent	1 pc
<b>PX905A</b>	Modelholder for Model Tray	1 pc
<b>PX906</b>	Adjustable metal base for support	1 pc
<b>PX907</b>	Modelholder for Dowel Pins, Pindex, etc.	1 pc
<b>PX908</b>	Protective refill shield	1 pc

# ROUTER FOR MODELS RUTEX PX801-CE

For excellent models finishing

### TECHNICAL FEATURES

Voltage	220-230V, 50 Hz, 370W
Base	300x210 mm
Height	300 mm
Weight	10Kg
Motor Power	1/2CV
Tool connector	ø 6 mm

Ref	Description	Q.ty
<b>PX801-CE</b>	<b>ROUTER FOR MODELS RUTEX WITH CYLINDRICAL BUR</b> and higher base for split-cast	1 pc
<b>PX805CE</b>	Rutex cylindrical bur 10x20 mm	1 pc
<b>PX807CE</b>	Rutex tapered bur	1 pc
<b>PX808CE</b>	Rutex ball bur	1 pc
<b>PX809CE</b>	Rutex inverted cone bur	1 pc
<b>PX812</b>	Rutex bags	4 pcs



## Colour Spacer Tender Rock

- Dentine colour die spacer ideal for composite and ceramic metal free restorations, allowing to check the colour
- Die hardner and sealer
- Contact localizer
- Die protector



Ref	Description	Q.ty
<b>TRUK</b>	<b>TENDER ROCK SPACER KIT</b>	
	Tender Rock spacer colour UD1	20 ml
	Tender Rock spacer colour UD2	20 ml
	Tender Rock spacer colour UD3	20 ml
	Tender Rock spacer colour UD4	20 ml
	Tender Rock spacer colour White	20 ml
	Tender Rock thinner	20 ml
<b>TRK</b>	<b>TENDER ROCK COMPLETE KIT</b>	
	Tender Rock spacer colour UD1	20 ml
	Tender Rock spacer colour UD2	20 ml
	Tender Rock spacer colour UD3	20 ml
	Tender Rock spacer colour UD4	20 ml
	Tender Rock spacer colour WHITE	20 ml
	Tender Rock thinner	20 ml
	Tender Rock Contact	30 ml
	Tender Rock DUR hardener	30 ml
	Tender Rock DUR thinner	30 ml
	Tender Rock Protect	30 ml

Ref	Description	Q.ty
<b>TRUD1</b>	Tender Rock spacer colour UD1	20 ml
<b>TRUD2</b>	Tender Rock spacer colour UD2	20 ml
<b>TRUD3</b>	Tender Rock spacer colour UD3	20 ml
<b>TRUD4</b>	Tender Rock spacer colour UD4	20 ml
<b>TRUW</b>	Tender Rock spacer colour WHITE	20 ml
<b>TRUT</b>	Tender Rock thinner	20 ml
<b>TRC</b>	Tender Rock CONTACT	30 ml
<b>TRCT</b>	Tender Rock contact thinner	20 ml
<b>TRD</b>	Tender Rock DUR hardener	30 ml
<b>TRDT</b>	Tender Rock DUR thinner	30 ml
<b>TRP</b>	Tender Rock PROTECT	30 ml

## BURN-OUT SELF-CURING PATTERN RESIN

### Burn-out self-curing pattern resin without shrinkage for accurate casting

Burn-out self curing pattern resin for fabrication of secondary crowns, fixations for soldering, bridges, anchors, attachments, post and core, etc. It can be used in both dental office and laboratory by mixing powder and liquid or with brush technique.



Post and core

Secondary crowns

Milling (and Maryland bridges)

#### OPERATING ADVANTAGES

- burns out completely
- minimal shrinkage <1%



Ref	Description	Q.ty
<b>TR100</b>	<b>TEMP RED BURN-OUT SELF-CURING PATTERN RESIN</b> powder 100 g + liquid 100 ml	2 pcs
<b>TR100P</b>	Temp Red powder refill	100 g
<b>TR100L</b>	Temp Red liquid	100 ml

# MICERIUM FLEX WAXES FOR FIXED & REMOVABLE PROSTHETIC APPLIANCE

HIGH QUALITY WAXES FOR CASTING AND MODELLATION



Ref	Description	Q.ty
<b>F54G</b>	● FLEX-E-Z GREEN It doesn't require a separator, with memory ideal for inlay, millings and precision castings	4 oz
<b>F55G</b>	● FLEX-E-Z GREEN	1 lb
<b>F54B</b>	● FLEX-E-Z BLUE It doesn't require a separator, with memory ideal for inlay, millings and precision castings	4 oz
<b>F55B</b>	● FLEX-E-Z BLUE	1 lb
<b>F54W</b>	○ FLEX-E-Z WHITE It doesn't require a separator, with memory ideal for inlay, millings and precision castings	4 oz
<b>F55W</b>	○ FLEX-E-Z WHITE	1 lb
<b>F54P</b>	● FLEX PURPLE extra hard no retraction, ideal for margins	4 oz
<b>F55P</b>	● FLEX-E-Z PURPLE	1 lb
<b>F55ZB</b>	● FLEX FOR CROWN & BRIDGE regular blue	1 lb

WAXES FOR REMOVABLE APPLIANCE WITHOUT RETRACTION



Ref	Description	Q.ty
<b>F95H</b>	HARD WAX PINK SHEETS ideale for PERFORM INKOVAC strong but flexible resistant till 55°C without alteration, scientific formula of fine virgin waxes	5 lb
<b>F85H</b>	HARD WAX PINK SHEETS 10 sheets	200 g
<b>F95A</b>	ALL SEASON WAX PINK SHEETS ideal all season	5 lb

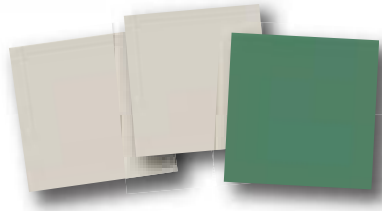
STICK & ROLL SPRUE WAXES



Ref	Description	Q.ty
<b>from F06SB to F12SB &amp; from F14S to F24S</b>	BLUE SPRUE WAX 12 cm wire and casting gauged waxes for partials 0,5mm (F24S), 1mm (F18S), 1,5mm (F14S), 2mm (F12SB) 2,5mm (F10SB), 3,3mm (F08SB), 4mm (F06SB)	60 g
<b>from F04R to F14R</b>	BLUE ROLLS wire and casting gauged waxes for partials: 1,5mm (F14R), 2mm (F12R), 2,5mm (F10R) 3,3mm (F08R), 4mm (F06R), 5mm (F04R)	250 g
<b>from F06S to F12S</b>	RED SPRUE WAX 15 cm available diameters: 2mm (F12S), 2,5mm (F10S), 3,3mm (F08S), 4mm (F06S)	125 g

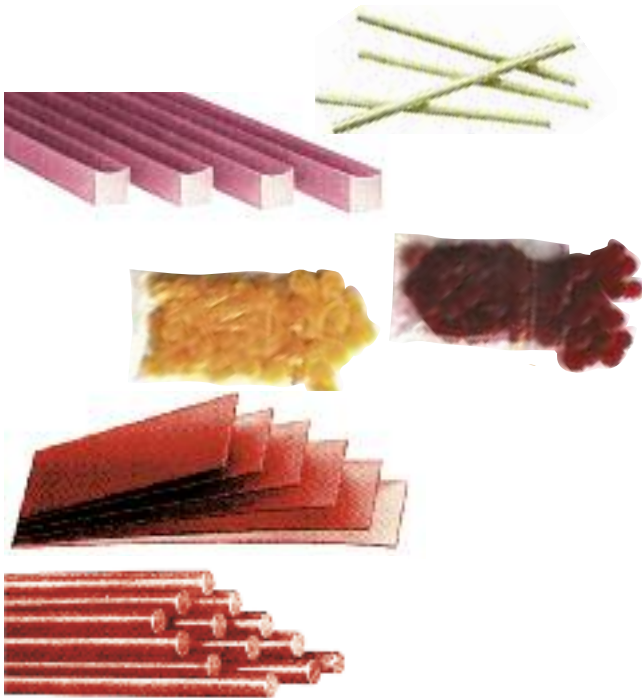
# MICERIUM FLEX CASTING AND UTILITY WAXES

## WAXES CASTING FOR PARTIALS



Ref	Description	Q.ty
from F02A to F08A	ADHESIVE CLEAR CASTING WAX available in these thickness in mm: 0,25 (F02A), 0,3 (F03A), 0,4 (F04A), 0,5 (F05A), 0,6 (F06A), 0,8 (F08A)	32 sheets
from NCASTINGW03 to NCASTINGW08	GREEN CASTING WAX available in the measures: 0,3 - 0,4 - 0,5 - 0,6 - 0,8 mm	32 sheets

## UTILITY WAXES

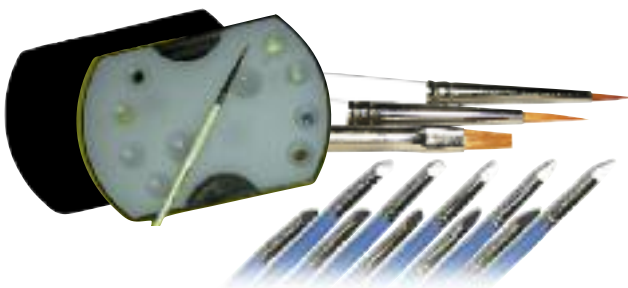


Ref	Description	Q.ty
F67Y	YELLOW STICKY WAX available in sticks of 12 cm. special formula fast hardening, stiff for removal with no residuals	100 g
F66P	PINK BITE STICKS WAX concave for an easier adaptation to the crest, special formula guarantees high precision bite reproduction	1 lb
F65R	DIPPING WAX RED dipping and coating die wax, high memory retention	1 lb
F65Y	DIPPING WAX YELLOW dipping and coating die wax, high memory retention	1 lb
F66R	FLEX RED BOXING WAX STRIPS high thickness (1 mm) for boxing stone or polyurethane impression, high adhesion, no heat needed	1 lb
F67R	FLEX RED BOXING WAX ROPES ideal for model repair and build up; usable also with the boxing wax strips, under the margin impression	1 lb

## INSTRUMENTS

### Micerium brushes

bristle & rubber tip brushes



Ref	Description	Q.ty
COSSTAIN01	Mixing palette with cover	1 pc
COSPEN11	Brush C for stains	1 pc
COSPEN12	Brush F for fossa	1 pc
COSPEN13	Brush M for manipulation	1 pc
TPENS	Silicone white soft brush	5 pc
TPENN	Silicone black hard brush	5 pcs

### Micerium instruments

for laboratory



Ref	Description	Q.ty
TDRK1	INSTRUMENTS KIT FOR COMPOSITE Instruments with inox steel tip Assorted ultra flexible screwable tips	3 pcs 3 pcs
TRAG	Ultra flexible tip shape A grey	2 pcs
TRBG	Ultra flexible tip shape B grey	2 pcs
TRCG	Ultra flexible tip shape C grey	2 pcs
TDRK2	Carving instrument Kit PKT + Lecron	6 pcs

# ALLOY AND INVESTMENT FOR CROWN & BRIDGE

	<b>C</b> Metal40	<b>NS</b> Metal50	<b>M</b> NMICERIUM	<b>A</b> METAL11-KG
<b>COMPOSITION</b>	Nickel	-	76,5%	85%
	Chromium	29%	27%	14%
	Molybdenum	3%	6%	4,5%
	Cobalt	63%	61,6%	-
	Tungsten	-	5%	-
<b>PHYSICAL PROPERTIES</b>	Vickers Hardness	304	350	440
	Elongation %	5,5	10,3	9
	Stress Prof (Mpa)	488	475	784
	Casting temperature	1482°C	1421°C	1385°C
	Expansion coefficient	14,6x10 <sup>-6</sup>	14,1x10 <sup>-6</sup>	14,3x10 <sup>-6</sup>

- C** Nickel free alloy for porcelain allergic
- NS** Nickel free alloy for porcelain allergic
- M** Specially suited for european porcelain
- A** For acrylics and post&core; easy finishing



Ref	Description	Q.ty
<b>METAL40</b>	<b>C</b> chrome cobalt for porcelain Available also box 100 g	1 Kg
<b>METAL50</b>	<b>NS</b> chrome cobalt for porcelain Available also box 100 g	1 Kg
<b>NMICERIUM</b>	<b>M</b> nickel chrome for crown and bridges in porcelain Available also box 100 and 500 g	1 Kg
<b>METAL11-KG</b>	Micerium <b>A</b> nickel chrome for acrylic and composite crown, bridges inlay post and core Available also box 100 and 500 g	1 Kg

Ref	Description	Q.ty
<b>METAL2</b>	Welding rod for nickel chrome	8 g
<b>METAL9BIS</b>	Soldering flux for nickel chrome solid	1 jar
<b>NNIRAVESTFIRE</b>	Microfire fast investment, fine grain for precious and not precious alloys 100 bags 90 g with liquid	9 Kg 1 lt
<b>NNIRAVESTL</b>	Liquid for Microfire Investment	1 lt

## ALLOY NICKEL FREE FOR PARTIAL NIRANIUM

	<b>PL</b> NPL	<b>VA</b> NVA	<b>NH</b> NNH
<b>COMPOSITION</b>	Cobalt	66%	62%
	Cobalt & Vanadium	-	64%
	Chrome	27%	29%
	Molybdenum	5%	5,5%
<b>PHYSICAL PROPERTIES</b>	Vickers Hardness	435	444
	Elongation %	3,5	3
	Stress proof (Mpa)	600	611
	Casting temperature	1482°C	1454°C



Ref	Description	Q.ty
<b>NPL (METAL20)</b>	PLADINIUM <b>PL</b> chrome cobalt alloy without Nickel with platinum and palladium for precise casting. High flexibility and polishing	1 Kg
<b>NVA</b>	Stiff chrome cobalt alloy <b>VA</b> with vanadium without nichel for milling & attachment	1 Kg
<b>NNH (METAL1)</b>	<b>NH</b> Chrome cobalt alloy without Nickel Special Hard high carbonium content for stiffer casting	1 Kg
<b>METAL14</b>	Welding rod for chrome cobalt	25 g
<b>METAL9</b>	Soldering flux for chrome cobalt	1 jar

**PL** Platinum & Palladium give hardness, gloss and prestige

**VA** Vanadium provides special strength for clasplless frameworks

**NH** Balanced formula of hardness and elasticity Ingots



# VACUUM MIXER VACUMIX WD700

## Just a finger with...Vacumix

WD700 mixer combine use simplicity with optimal performances. Suitable for mixing WITHOUT AIR every type of plaster, investment and silicone. Powerful and silent, equipped with vacuum pump that works also for dry-mixing and electronic timer. Available with wall or table support. The unit is equipped with a 500 cc bowl. Available on request 5 type of bowl with different size: 200, 500, 1000, 2000 cc. Available on request the WD700A model with adjustable speed.



### TECHNICAL FEATURES

Voltage	230V - 140W
Motor	12N/M
Speed	400 RPM
Pump	-0,8 bar, 10 lt per min.
Base	220x160 mm (300x280 mm table support)
Height	300 mm (615 mm table support)
Weight	8,5 Kg (10 Kg table support)

Ref	Description	Q.ty
<b>WD700</b>	VACUUM MIXER 400 RPM 0,8 BAR also for partials, 500 cc bowl both wall and table support	1 pc
<b>WD711</b>	Mixing bowl 200 cc with filter	1 pc
<b>WD712</b>	Mixing bowl 500 cc with filter	1 pc
<b>WD713</b>	Mixing bowl 1000 cc with filter	1 pc
<b>WD714</b>	Mixing bowl 2000 cc with filter	1 pc
<b>WD711A</b>	Mixing bowl 200 cc for alginate	1 pc

## Light curing units for resin and composite

Ref	Description	Q.ty
<b>LABORLUXL</b>	LIGHT CURING UNIT 300 Watt with timer and revolving plate for light curing of all materials 310-500 nm	1 pc
<b>LABORLUXL-L</b>	Refill bulb 300 Watt for LABORLUXL	1 pc
<b>LABORLUXLED</b>	LED LIGHT CURING UNIT with timer and external fibre optic for layering curing	1 pc
<b>LAMPADAPLUST</b>	LIGHT CURING UNIT with timer for inlay and composite veneers, 320-500 nm 4 halogen bulbs x 9W and 1 halogen bulb x 50W	1 pc
<b>LAMPADA</b>	UVA LIGHT CURING UNIT for Perform Soft, light curing trays, stains 4 mini-bulbs UVA x 9W, 320-400 nm	1 pc
<b>LAMPADINE</b>	Refill UVA bulb 9W	1 pc
<b>LAMPAPLUS</b>	Refill halogen bulb 9W	1 pc
<b>LAMPA-8</b>	Refill halogen bulb 50W	1 pc

## LIGHT CURING UNIT



# ENAMEL PLUS TENDER

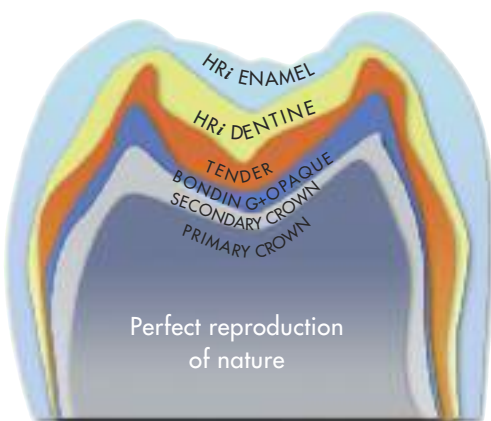
## Appearance of natural tooth, technique and aesthetics of ceramic

Micro-hybrid composite that can be used both directly in the mouth and in laboratory with a high elasticity dentine body, a paste opaque and a bonding that guarantees an unique adhesion.

**TENDER:** high elasticity dentine body  
**HRi:** high resistance enamel body  
**THE WINNING MATCH**

## LIKE CERAMIC BETTER THAT CERAMIC ...

It is possible to make adjustments also in the dental practice with the same material used in the laboratory. Enamel Plus HRi can be used both for luting, making in that way at the same time a relining of the manufactured article, and as liner, before taking the impression (available also "flow"). It allows more possibilities in implant solution and it is ideal for combined cases.



Complex fractures (Dr. Lorenzo Vanini)



Cementation and possible adjustments made always with the same material



Preparation: "HFO Flow" can be used as liner.



Composite inlay cemented with "HFO OW" (Dr. Lorenzo Vanini)



Composite build up on implants: Tender opaque



Pressing technique with flask: Dentine



Pressing technique with flask: Enamel



Completed case by Mr. D. Rondoni

Ref	Description	Q.ty
<b>TENDER1H</b>	<b>INTRODUCTORY KIT ENAMEL PLUS TENDER</b>	
	7 Tender: T2, T3, T4, T5, MW, MO, MY	7x2,5g
	4 dentine HRi: UD2 (A2), UD3 (A3), UD4 (A4), UD5	4x2,5g
	3 universal enamel HRi: UE1, UE2, UE3	3x2,5g
	1 intensive enamel: Intensive White Spot (IWS)	2,5g
	1 opalescent enamel OBN	2,5g
	2 paste opaque: light, clear	2x3g
	1 Tender bond metal primer	2,5ml
	2 Temp Chips retentions: standard, micro	2x10g
	1 Temp Chips adhesive	20 ml
	<b>TENDER7H</b>	<b>ENAMEL PLUS KIT TENDER</b>
1 Tender: T4-MO		2x2,5g
3 dentine HRi: UD2 (A2), UD3 (A3), UD4 (A4),		3x2,5g
1 universal enamel HRi: UE2		2,5g
1 Stain Brown2		3g

# PRESSING TECHNIQUE WITH FLASK

Plexiglass flask for long bridges, combination works, partials, perio-overdenture

## TECHNOLOGICAL & OPERATING ADVANTAGES

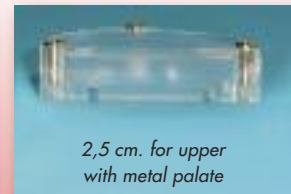
- Easy: wax-up instead of composite modellation
- Fast: save up to 70% working time
- Accurate: better surface
- Measures: 10,5 x 8,6 cm x max 5,5 cm



## TENDER FLASK 2 SPECIAL INSERTS FOR REDUCING SILICONE USE



2 cm. for upper and lower without palate



2,5 cm. for upper with metal palate

## TENDER FLASK 1 UNIVERSAL BASE 2 COVERS WITH DIFFERENT HEIGHTS

Special silicones for stent, ideal also for transparent flask



Ref	Description	Q.ty
<b>TENDERFLASK</b>	<b>TENDER FLASK SPECIAL PLEXIGLASS</b> flask for composite: plexiglass base plexiglass covers plexiglass inserts	1 pc 2 pcs 2 pcs
<b>TEMPSMK</b>	<b>SILICONE KIT FOR TENDER FLASK</b> Silicone for stent/flask 90 shore A+B+retarding Silicone for stent clear 55 shore cartridge Silicone-flask separator	300g 50 ml 200 ml
<b>TEMPSMR3</b>	Silicone for stent and flask 90 shore Paste A white, Pasta B blue + retarding	1,5+1,5 Kg
<b>TEMPSMR10</b>	Silicone for stent and flask 90 shore Paste A white, Pasta B blue +retarding	5+5 Kg
<b>TEMPSM10</b>	Silicone retarding for flasking technique	10 ml
<b>TEMPSMT</b>	Silicone for stent clear 55 shore cartridge working 1'30"-2'30", hardening 15-20 min	50 ml
<b>TEMPSMT5</b>	Silicone for stent clear 55 shore cartridge working 1'30"-2'30", hardening 15-20 min	5x50ml
<b>TEMPSI</b>	Silicone-flask separator	200 ml
<b>TDPUN25</b>	Mixing tips	25 pcs

## ENAMEL PLUS TENDER



## REFILL TENDER

Ref	Description	Q.ty
TENDERT2	Tender T2 (A1, A2)	5 g
TENDERT3	Tender T3 (A3)	5 g
TENDERT3,5	Tender T3,5 (A3,5)	5 g
TENDERT4	Tender T4 (A4)	5 g
TENDERT5	Tender T5	5 g
TENDERMW	Tender MW white modifier (white)	5 g
TENDERMY	Tender MY yellow modifier (yellow)	5 g
TENDERMO	Tender MO orange modifier (orange)	5 g
COSSTAINT	Stain flow transparent	2 g
PLEXI26	Plexiglass syringe holder dark 26 holes	1 pc
PLEXI9	Plexiglass syringe holder transparent 9 holes	1 pc

Note: Tender bodies can also be used for B, C and D colours of Vita® shade guide

for HRI  
enamel and  
dentine refill  
see section  
Aesthetic  
page 12-13

Ref	Description	Q.ty
ETBOND	Tender bonding metal primer	5 ml
ETOCLEAR	Tender paste opaque clear for first layer	3 g
ETOL	Tender paste opaque light (UD1, UD2, UD3)	3 g
ETOD	Tender paste opaque dark (UD3,5, UD4)	3 g
TEMPF	Temp bonding resin-composite, composite-composite	10 ml
TORS10	Temp Chips Micerium Standard retention	10 g
TORM10	Temp Chips Micerium Micro retention	10 g
TORA	Temp Chips Mic. Adhesive for retention	20 ml
TEMPSEAL	Temp Seal Micerium plaster sealing	1 pc
TEMPSEP	Temp Sep wax-composite-ceramic separator	1 pc
TEMPSILV	Silver powder for checking texture	30 g
COSSCALATS	Tender, Pink, Stain shade guide 21 Colours	1 pc



## STAIN ENA TENDER

Light curing acrylic stains ideal for characterization of:

- fixed and combined composite prosthetics
- resin and composite temporary
- removable prosthesis



Ref	Description	Q.ty
ETSK	Light curing stain Complete Kit White, red, blue, brown, dark brown, black khaki, orange, yellow, primer, cleaner, 2 brushes	9x3 g
ETSK7	Light curing stain Introductory Kit White, red, blue, brown, dark brown, khaki, orange, primer, 2 brushes	7x3 g

Ref	Description	Q.ty
ETS1	Light curing stain white	3 g
ETS3	Light curing stain blue	3 g
ETS4	Light curing stain brown	3 g
ETS5	Light curing stain dark brown	3 g
ETS6	Light curing stain black	3 g
ETS7	Light curing stain yellow	3 g
ETS8	Light curing stain orange	3 g
ETS9	Primer (Thinner)	3 g
ETSR	Light curing stain red	3 g
ETSCA	light curing stain khaki	3 g
ETSCL	Cleaner	50 ml

# COMPOSITE & OPAQUE FOR GUM LIGHT-CURING INDIVIDUAL TRAY & RESIN STAINS



## TENDER PINK COMPOSITE

Light curing composite pink for gingival flange  
Pink opaque for partial



Ref	Description	Q.ty
<b>TENDERPKIT</b>	Tender Pink Kit Light curing composite pink Pink Orange, Pink Light, Pink Dark, Pink Transparent Pink paste opaque Ena Tender Stain: Red, Blue, White	4x2,5 g  1 g 3x3 g
<b>TENDERP</b>	Tender Pink Orange	5 g
<b>TENDERPL</b>	Tender Pink Light	5 g
<b>TENDERPD</b>	Tender Pink Dark	5 g
<b>TENDERPT</b>	Tender Pink Transparent	5 g
<b>ETOP</b>	Pink paste opaque light curing for covering partial	3 g
<b>TENDERFP</b>	Tender Pink Orange Flow	2 g

## TENDER ACRYL RESIN

Self-curing resin for removable and combined prosthesis with low monomer residual and natural chromatic characteristics.

- high colour stability
- high mechanical values
- high compactness reduces polishing time
- high fitting precision
- low monomer residual

Ref	Description	Q.ty
<b>TAL1</b>	Tender Acryl liquid	1000 ml
<b>TAL5</b>	Tender Acryl liquid	500 ml
<b>TAP01</b>	Tender Acryl Pink powder opaque	1 Kg
<b>TAP05</b>	Tender Acryl Pink powder opaque	500 g
<b>TAPT1</b>	Tender Acryl Pink powder transparent	1 Kg
<b>TAPT5</b>	Tender Acryl Pink powder transparent	500 g
<b>TAPF</b>	Tender Acryl Pink Fibrillae	5 g



# ENAMEL PLUS TEMP

Material very interesting for opacity and fluorescence of dentin bodies and for translucency of enamel bodies that allow to put in evidence the typical contrast between these two elements in the natural tooth.

Enamel bodies also allow to obtain a natural polishing in temporary crowns, similar to the definitive ceramic elements. It can be used both in laboratory with the help of silicone stent or of vacuum forming matrix with the direct technique using a silicone impression or a preformed crown.



Temporary resin for aesthetic temporary crown and bridge of 2<sup>nd</sup> generation

### TECHNICAL & OPERATING ADVANTAGES

- polymerization in laboratory with 4 liquids (cold or hot curing with stent, hot curing in flask, light curing) or in the mouth with 2 liquids (cold curing regular or fast setting ideal for relining)
- residual monomer less than 0,8%
- it does not exceed 57°C
- high precision of fit
- easy to repair
- cadmium-free, no tertiary amines
- creamy consistency
- VICKERS hardness 140 MPa
- modulus of elasticity: 2300N/mm<sup>2</sup>

TECHNICAL STUDY



Teeth before the preparation

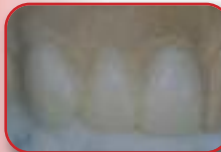


Dentine placed into the impression



Cemented and finished temporary

TECHNICAL LABORATORY



Stent and dentine pouring



Characterizations with stains and clear



Enamel pouring and final polishing



New fluorescent bodies for aesthetic temporary with higher brightness and excellent integration



Ref	Description	Q.ty
<b>TEMP3</b>	<b>TEMPORARY RESIN COMPLETE KIT</b> 6 dentine Enamel plus Temp: UD1 (A1), UD2 (A2), UD3 (A3), UD3,5 (A3,5), UD4 (A4), UD5 4 enamel Enamel plus Temp: WHITE, CLEAR, GREY, BLUE 3 universal enamel Enamel plus Temp: UE1, UE2, UE3 Self curing liquid Enamel plus Temp 100 ml Hot curing liquid Enamel plus Temp for stent 25 ml Hot curing liquid Enamel plus Temp for flask 25 ml Light curing liquid Enamel plus Temp 10 ml	6x50 g 4x50 g 3x50 g
<b>TEMP1N</b>	<b>TEMPORARY RESIN INTRODUCTORY KIT</b> 4 dentine Enamel plus Temp: UD2 (A2), UD3 (A3), UD3,5 (A3,5), UD4 (A4), 2 enamel Enamel plus Temp: UE2, Blue Self curing liquid Enamel plus Temp 100 ml	4x50 g 2x50 g 100 ml
<b>TEMP10N</b>	<b>TEMPORARY RESIN TRIAL KIT</b> 4 dentine Enamel plus Temp: UD2 (A2), UD3 (A3), UD3,5 (A3,5), UD4 (A4), 1 enamel Enamel plus Temp UE2 Self curing liquid Enamel plus Temp 25 ml	4x10 g 1x10 g 25 ml



Ref	Description	Q.ty
TEMPUD0	Enamel plus Temp dentine UD0	100 g
TEMPUD1	Enamel plus Temp dentine UD1 (A1)	100 g
TEMPUD2	Enamel plus Temp dentine UD2 (A2)	100 g
TEMPUD3	Enamel plus Temp dentine UD3 (A3)	100 g
TEMPUD3,5	Enamel plus Temp dentine UD3,5 (A3,5)	100 g
TEMPUD4	Enamel plus Temp dentine UD4 (A4)	100 g
TEMPUD5	Enamel plus Temp dentine UD5	100 g
TEMPB1	Enamel plus Temp dentine B1	100 g
TEMPB2	Enamel plus Temp dentine B2 (62)	100 g
TEMPB3	Enamel plus Temp dentine B3 (65)	100 g
TEMPB4	Enamel plus Temp dentine B4	100 g
TEMPC2	Enamel plus Temp dentine C2	100 g
TEMPD3	Enamel plus Temp dentine D3	100 g
TEMPUE1	Enamel plus Temp universal enamel UE1	100 g
TEMPUE2	Enamel plus Temp universal enamel UE2	100 g
TEMPUE3	Enamel plus Temp universal enamel UE3	100 g
TEMPS3	Enamel plus Temp enamel WHITE	100 g
TEMPOB	Enamel plus Temp enamel BLUE	100 g
TEMPT	Enamel plus Temp enamel CLEAR	100 g
TEMPGR	Enamel plus Temp enamel GREY	100 g
TEMPDOL	Enamel Temp Dentopaq Light	100 g
TEMPDOD	Enamel Temp Dentopaq Dark	100 g
TEMPMO	Enamel Temp Orange Modifier	100 g
TEMPMY	Enamel Temp Yellow Modifier	100 g
TEMPPP	Enamel plus Temp PINK for gum	100 g
TEMPFL	Enamel plus Temp self curing liquid	100 ml
TEMP1-L	Enamel plus Temp self curing liquid	1000 ml

Ref	Description	Q.ty
TEMPH	Enamel plus Temp hot curing liquid	100 ml
TEMPPRESS	Enamel plus Temp hot curing liquid for flask	100 ml
TEMPLC	Enamel plus Temp self curing liquid	10 ml
TOA2	Opaque Temp universal light curing	3 g
TEMPISO	Plaster resin separator Micerium	50 ml
COSSHINYSHOP	Goat brushes HP Micerium	12 pcs
TEMPPOL	Polishing liquid for resin	1 oz
TEMP99	Temp Stick polishing paste Micerium	100 g

"Temp" Discs for CAD/CAM, available in two thicknesses in colour Universal and Light



Other types of blocks for CAD CAM can be produced on request

Ref	Description	Q.ty
TC15UD1	Temp CAD CAM Disc diam.98,5mm x 15mm UD1 (A1) Light	1 pc
TC15UD3	Temp CAD CAM Disc diam.98,5mm x 15mm UD3 (A3) Universal	1 pc
TC20UD1	Temp CAD CAM Disc diam.98,5mm x 20mm UD1 (A1) Light	1 pc
TC20UD3	Temp CAD CAM Disc diam.98,5mm x 20mm UD3 (A3) Universal	1 pc

# ENAMEL PLUS TEMP COLOUR SYSTEM

## Stains

Powder & liquid light curing stains for fast characterization of temporary both in dental practice and in laboratory



### TECHNOLOGICAL & OPERATING ADVANTAGES

- intensive dentine shades A light (UD2-UD3) and AS dark (UD3,5-UD4), B (UD5) for cervical and dentine characterization of temporary
- intensive shades sunrise and sunset for characterization of temporary, sky for enamel, cloud for mamelons
- light-curing liquid for mixing the shades
- light-curing varnish for polishing and sealing, with primer and cleaning liquids



Ref	Description	Q.ty
<b>TEMPS1N</b>	<b>STAINS TEMP COLOUR SYSTEM KIT</b> shades A, AS, B, sunrise, sky, cloud, sunset, light-curing liquid, varnish	3g ea 10 ml ea
<b>TEMPS21</b>	Varnish for polishing UVA	10 ml
<b>TEMPS22</b>	Primer for varnish	10 ml
<b>TEMPS11</b>	Intense dentine shade A - light (UD2-UD3)	3 g
<b>TEMPS12</b>	Intense dentine shade AS - dark (UD3,5-UD4)	3 g
<b>TEMPS13</b>	Intense dentine shade B (UD5)	3 g
<b>TEMPS15</b>	Intensive shade sky	3 g
<b>TEMPS16</b>	Intensive shade sunrise	3 g
<b>TEMPS17</b>	Intensive shade cloud	3 g
<b>TEMPS18</b>	Intensive shade sunset	3 g
<b>TEMPLC</b>	Enamel plus Temp light curing liquid	10 ml



## Temp Colour System

characterization system developed by Mr. Oliviero Turillazzi

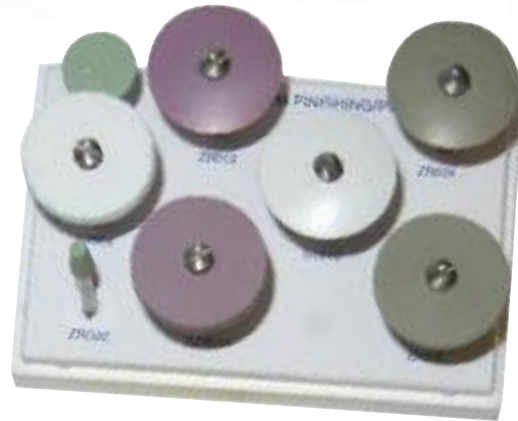




# ZIRCOSHINY

Abrasives and diamond polishers for zirconia - ceramic & composite

## FINISHING & POLISHING KIT FOR ZIRCONIA & CERAMIC



Ref	Description	Q.ty
<b>ZR1000</b>	Finishing and polishing Kit for Ceramic and Zirconia, containing:	
	Green grinder taper end <b>ZRG02</b>	1 pc
	Green grinder wheel <b>ZRG01</b>	1 pc
	White silicone wheel <b>D7504</b>	1 pc
	White silicone knife edge <b>D7510</b>	1 pc
	Pink diamond silicone wheel <b>ZR014</b>	1 pc
	Pink diamond silicone knife edge <b>ZR013</b>	1 pc
	Grey diamond silicone wheel <b>ZR025</b>	1 pc
	Grey diamond silicone knife edge <b>ZR024</b>	1 pc

## POLISHERS FOR ZIRCONIA & CERAMIC

Ref	Shape	Ref	Shape
<b>D7503</b>		<b>D7509</b>	
<b>ZR014</b>		<b>ZR013</b>	
<b>ZR025</b>		<b>ZR024</b>	

### Color



**D7503**



**ZR014**



**ZR025**

- White silicone: Coarse for finishing 12 pcs
- Pink diamond silicone: Medium for polishing 1 pc
- Grey diamond silicone: Extra-Fine for high-shine 1 pc

## DIAMOND ABRASIVES FOR ZIRCONIA & CERAMIC

Ref	Grinder Wheel HP	Ref	Grinder Taper End HP
<b>ZRG01</b>		<b>ZRG02</b>	

Green: Finishing of zirconia 1 pc

## DIAMOND DISC

Ref	Disc	1 pc
<b>ZR915CF</b>	Diamond disc for zirconia d/s ø 19 mm x 0,16 mm	
<b>D751</b>	Diamond disc superflexible d/s ø 22 mm x 0,15 mm	
<b>D752</b>	Diamond disc superflexible s/s ø 22 mm x 0,10 mm	

## DIAMOND BURS HP

Ref	Description	Shape	1 pc	Ref	Description	Shape	1 pc
<b>D713</b>	23/4030			<b>D725</b>	501/016		
<b>D714</b>	42/4030			<b>D726</b>	537/016		
<b>D716</b>	48/4030			<b>D727</b>	558/016		
<b>D717</b>	71/4030			<b>D728</b>	559/023		
<b>D718</b>	212/4020			<b>D729</b>	563/014		
<b>D719</b>	212/4030			<b>D730</b>	563/018		

## DIAMOND PASTE FOR CERAMIC & COMPOSITE FOR LABORATORY

Ref	Description	Q.ty
<b>ESA20</b>	Ena Shiny A 3µm paste for composite	20 g
<b>ESB20</b>	Ena Shiny B 1µm paste for composite	20 g
<b>ZRZ20</b>	Zirco Shiny Z paste for ceramic/zirconia	20 g
<b>ZRSHP</b>	Black brush for Zirco Shiny Z paste	12 pcs

