



Orthodontic Catalogue



Micerium

The future is already present in Micerium



Dear customer,

Our company has been operating in the dental field for more than twenty years, and having always believed in the importance of quality and service, we are glad to inform you that Micerium S.p.A. has been certified in compliance to UNI EN ISO 9001:2000 and UNI CEI EN ISO 13485:2004, and our products comply to MDD 93/42 EEC

Micerium S.p.A. is now in an excellent position on the international market, thanks to its significant development of the last years. The deep care lavished by the different levels of our organization, has made possible to strengthen commercial agreements with the best international brand names and the birth of new important partnerships, achieving at the same time the present of our products in the most of the world Countries. The constant comprehension and collaboration of our Customers stimulate us to continuously improve and encourage us in researching the highest aims.

We, that are part of the solid group Micerium S.p.A., are proud of what we have obtained, but, to continue to go over our results, we know that we have to daily improve our knowledge, to recognize and analyze the difficulties in order to be able to win them, to constantly exercise a constructive self-critique, and to keep alive the desire of always wishing the best.

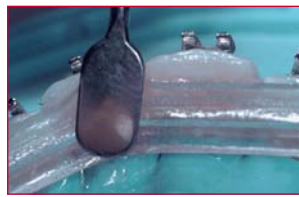
This catalogue, one of the most comprehensive and advanced in the European market, has been prepared with deep care to reach a precise aim: to be an easy and pleasant work instrument, to serve our Customer with the efficacy and the quality He deserves.

Cordially

Micerium S.p.A.
Ottaviano Micelli
Orthodontics Sale Responsible

Silanized Glass Fibers, impregnated with light curing resin

- Time saving / cost reduction
- Easy application
- One office visit without impression
- Similar elasticity to natural dentine
- Excellent adhesion to the tooth
- No fraying
- Excellent aesthetic, as invisible
- Ideal for long terms retentions and for patients allergic to metal
- Smooth, no irritating, easy cleaning
- No plaque infiltration
- Fiber holder in silicone to be used for an easy application: measure, cut, apply, cure and check



Silicone Holder for an easier application



Glass fiber retainer in superiors: aesthetic and comfortable.

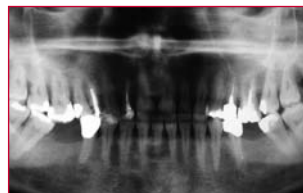


Glass fiber retainer in inferiors

NEW APPLICATION: AESTHETIC DENTAL ANCHORAGE



Anchorage in fiber on incisive anterior



Orthopantomogram before molar uprighting



Orthopantomogram to finish molar uprighting

Characteristics

- Tender Fiber Technology: oral applications without metal
- Bundle of unidirectional single rods of glass fiber 14 μ m
- Fibers impregnated with light curing resin
- Fibers not only impregnated but also silanized
- Filler 0,012 μ m
- Same fluorescent resin used for Enamel Plus HFO and Enapost
- Special slight sticky property
- No MMA solvent nor PMMA polymer are used
- Available in 3 diameters: Ortho (0,8mm.), Due (1,3mm) Quattro (1,7mm.)

Benefits

- No preparation of tooth surface.
- Less office visits needed
- No additional investment required
- Very strong resistance to acid and alkaline substances
- Higher resistance of finished product perpendicularly to fiber direction
- Ready to be used, fast application, reduced cost of treatment; no risk of fraying, during application or over time
- Stronger chemical connection between fibers
- Increase of physical properties
- Better chemical reaction with luting and restoration materials and excellent aesthetics
- Better connection of fibers with composite and easier oral application due to better adhesion to tooth walls
- No drying out of resin: No decrease of physical properties due to rewetting
- Multifunctional: orthodontic and periodontal splinting, prosthesis reinforcement



- Contents: 1.600 glass fibers
- Diameter: 0,8 mm.
- Length: 12 cm.

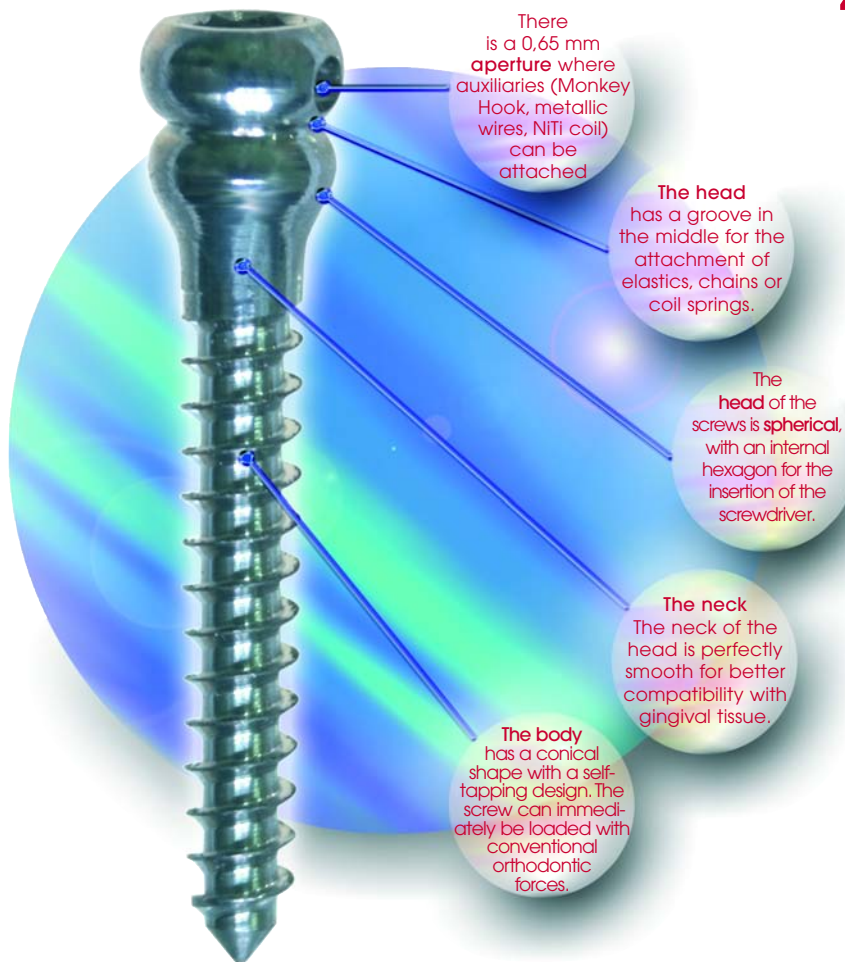
Ref.	Description	Q.ty
ATF11	Tender Fiber Ortho	1 pc.

M.A.S.

ORTHODONTIC MINISCREWS FOR TEMPORARY ANCHORAGE

The **Miniscrew Anchorage System** or **M.A.S.** is a result of the combined efforts of researchers from the Engineering, Orthodontic and Oral Surgery fields. Product design, research and manufacturing phases have all been subject to a rigid criteria of quality and safety, adhering to the most modern healthcare best practices.

MINISCREWS



4 MEASURES



AM1509

Max length: 9 mm.
Head length: 2,6 mm.
Ø neck: 1,5 mm.
Ø apex 1,3 mm.



AM1511

Max length: 11 mm.
Head length: 2,6 mm.
Ø neck: 1,5 mm.
Ø apex 1,3 mm.



AM1311

Max length: 11 mm.
Head length: 2,6 mm.
Ø neck: 1,3 mm.
Ø apex 1,1 mm.



AM1514L

Max length: 13,5 mm.
Head/neck length: 5,1 mm.
Ø neck: 1,5 mm.
Ø apex 1,3 mm.

Indications

- Closure of extraction spaces using different mechanical methods
- Extrusion of impacted cuspids
- Dental intrusion
- Dental derotation
- Anchorage for molar distalization (Implant Distal Jet)
- Intermaxillary elastics (Cl. II and III)
- Molar uprighting
- Correction of the scissors bite
- Occlusive line vertical control



ORTHODONTIC MINISCREWS FOR TEMPORARY ANCHORAGE

Advantages & clinical cases

- Independent from the position and number of teeth
- Excellent management of the forces
- Excellent comfort
- Reduction of the treatment time
- Simple surgical procedure of miniscrew insertion
- Possible application in mixed dentition as in permanent dentition
- Large possibility of insertion in numerous anatomic sites in the mouth
- Simple removal
- Immediate loading
- Low costs
- Biocompatible = titanium

The **AMKITI** Introduction Kit includes four miniscrews (2 types) along with the minimal surgical and orthodontic equipment necessary to use the system in a variety of applications assuring an always safe and effective procedure. The **AMKITK** Complete Kit includes eight miniscrews (all types) complete with all surgical and orthodontic accessories necessary to fully maximize all of the systems applications.



MINISCREWS

COMPONENTS	DESCRIPTION	REF.	REFILL	AMKITI	AMKITK
	Miniscrew \varnothing 1,3 height 11 mm.	AM1311	2	2	2
	Miniscrew \varnothing 1,5 height 9 mm.	AM1509	2	2	2
	Miniscrew \varnothing 1,5 height 11 mm.	AM1511	2	-	2
	Miniscrew \varnothing 1,5 height 14 mm.	AM1514L	2	-	2
	Surgical guide	AM250	10	2	4
	Rotary micromotor scalpel	AMBIS	1	-	-
	Ball bur \varnothing 1,0 mm	AMPAL	1	1	1
	Drill \varnothing 1,1 mm	AMFRESA1	1	1	1
	Drill \varnothing 0,9 mm	AMFRESA2	1	1	1
	Silicon stop ring for drills	AMRING1	10	4	4
	Screwdriver mechanical head 1,25 mm	AM125S	1	-	1
	Screwdriver manual head 1,25 mm	AM125L	1	1	1
	Screwdriver manual long head 1,25 mm	AM125XL	1	-	-
	Security spring for screwdriver manual	AM120M	10	2	2
	Pin-Hook	A201-131	20	2	4
	Monkey Hook	A851-640S	10	2	4
	Gingival protection instrument	AM400	1	-	1
	Surgical Tray 6 dishes	AMCAS	1	1	1

TENDER ORTHO BOND

LIGHT CURING ADHESIVE COMPOSITE

Tender Ortho Bond

Last generation new medium viscosity composite, light curable both with halogen and LED Light, to be used as adhesive for brackets.

It make the bracket positioning easier, in a stable manner and without dripping.

High keeping thanks to:

- Low abrasion
- High resistance to flexure
- High flexibility, high resistance to fracture
- Usable with two adhesive types: Ena Bond & Ena Bond SE

Tender Ortho Bond used with Ena Bond

EnaBond is an ethanol based one-component light curing adhesive (Sealant) to be used after etching the enamel surfaces: it allows an high grade of adhesion of the composite to the tooth (more than 40).



Ref.	Description
CFOT1	Complete Kit tips: 9 gr Composite tips 0.3 g 5 ml EnaBond one-component adhesive 2 ml Etching gel Accessories N.B. without syringe

Ref.	Refill	Q.ty
CFOT30	Composite tips (30)	9 gr.
COSM300A	Ena Bond Adhesive (Sealant)	5ml.
COSM101	Ena Etch Etching gel	2x 2 gr.
COSSIR	Precision syringe for tips	



Tender Ortho Bond used with Ena Bond SE

(available from 2008)

Ena Bond SE is a self-etching adhesive, consisting of a primer and a light curing adhesive that avoids the losing of dental substance coming out from the enamel etching. It allows to obtain however a very good adhesion (30 MPa) of the composite for the cementation of the bracket to the tooth. To obtain a good adhesion it is important to apply the primer, make it completely dry, blowing away the eventual exceeding liquid and well cure the Self Etching Adhesive before the composite application.

Ref.	Description
CFOT2	Complete Kit tips 9 gr Composite tips 0.3 g 5 ml. Primer 5 ml Self Etching Adhesive Accessories N.B. without syringe

Ref.	Refill	Q.ty
CFOT30	Composite tips (30)	9 gr.
CFOTP	Primer	5 ml.
CFOTS	Self Etching Adhesive	5 ml.

PACON MACHINE LINGUAL TECHNIQUE

Pacon Machine

Compensation system, created by Mr. Armando Benecchi and Dr. Antonio Veneziani, by means of it possible to obtain a really Straight Wire technique, even from the lingual side.

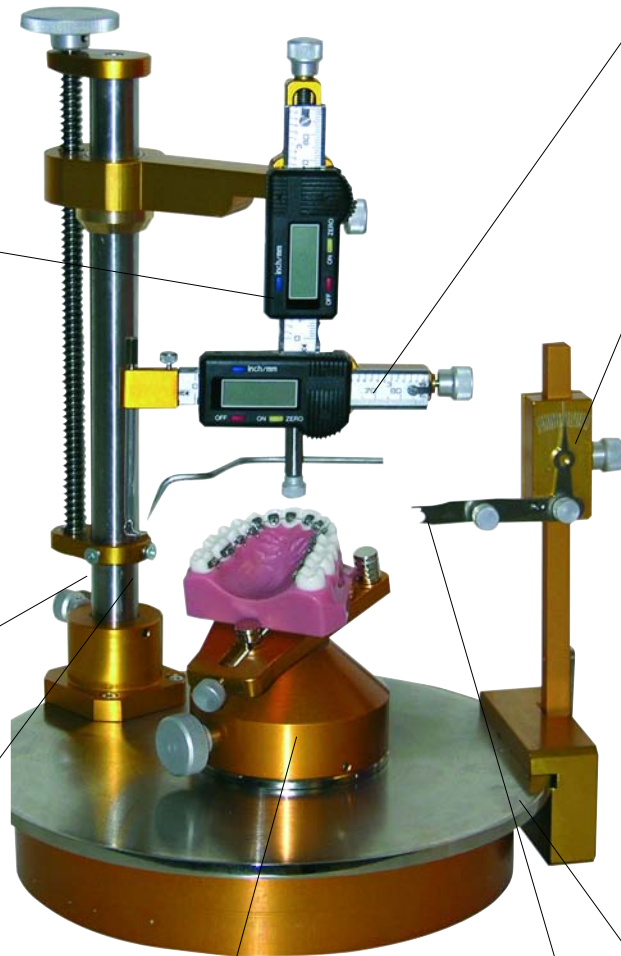


The mobile measurement and positioning system
it has a method for the control of the height and the width of the bracket slot, and it can block the braces on itself.



The braces supports
they are some supports for braces and tubes.

The vertical column
it has an up and down arm's system movement that allows to maintain the cast model near the measurement system



The cast model support
it's quite heavy to obtain a great stability. You can operate on it without obstruct the cast operations

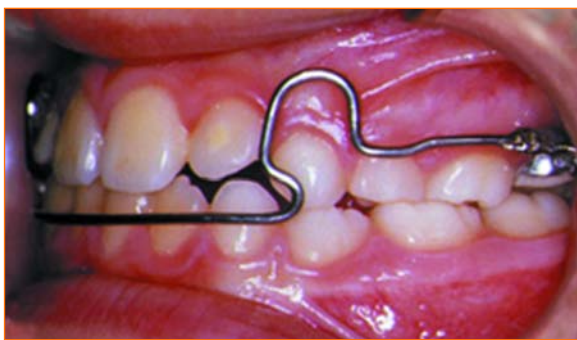
The arm
it has in the bottom a point zero revelator and a positioning plane for braces

The R.I.A. column
it's for inclination and angulation reference. It's mounted on a dedicate support just in the base, and it could be inclined of 30°. It has a mobile system that you can block in every position for using labial indicators, and you can read each value on special indicators.

The base
it rotates around a central axis and allows a complete 360° access on the cast model.



The indicators
they are special accessories with three reference points: two labial and one occlusal, and they are typical for each tooth



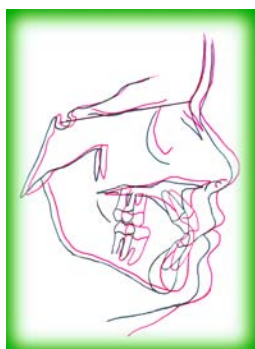
Smart Wire III

It is a fixed arch, created by Dr. Aldo Carano with the involvement of Mr. Lorenzo Balsamo and developed by Micerium, that differ from the others arches in the functional device for: higher stability, absence of palatal burdens and the possibility to be worn round the clock.

- Treatment without collaboration of the dental-skeletal Class III in growing patients.
- In the interceptive therapy of Class III.
- As active contention in cases of Class III.

In patients with a transversal contraction of the superior maxilla, the SW III it is used in combination with a fixed expander; in cases of anterior cross-bite a soldered advancing arch is preferred; where a tongue functional reeducation is required, a soldered grate is preferred.

The reciprocal action of the arch applies a distalizing force on the inferior arch and on the mandible and at the same time exercise a mesializing traction on the first superior molars.

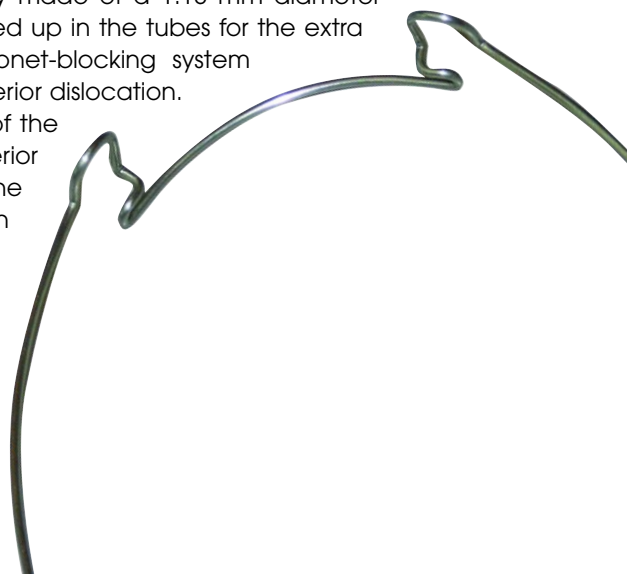


- The best comfort
- Easy for management in the office
- Do not require patient collaboration
- Patient can chew wearing the device
- Insertion and removing managed by parents
- No palatal resin burden
- Cheap

Ref.	Description	Q.ty
852-500M	Arch for elastics	1 pc

The Smart Wire III is a new orthodontic auxiliary simply made of a 1.13 mm diameter stainless steel arch. It is inserted behind and it is plugged up in the tubes for the extra oral traction of the superior molars, utilizing a bayonet-blocking system soldered on the final part of the wire that avoid its anterior dislocation.

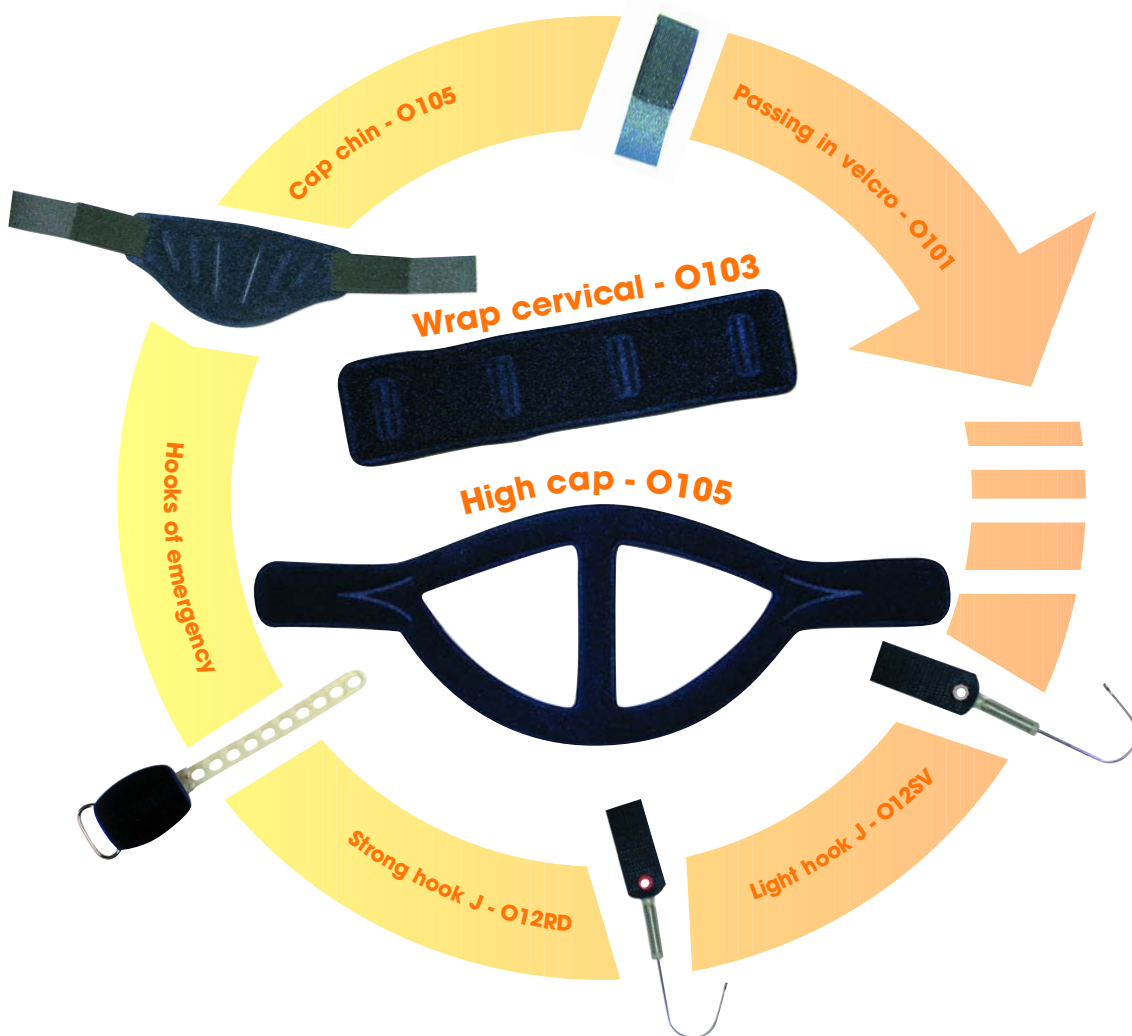
During the mouth closing phases the anterior portion of the SW III interferes with the vestibular surface of the inferior incisors determining a distalizing force on them and in the mandible and at the same time a mesializing force on the molars and on the superior maxillary. This force and reaction combination drives the correct orthodontic-orthopedic therapy of the Class III malocclusion on the sagittal plane in growing patients. In association with the action of the SW III it is required to match a device to obtain a tridimensional correction of the Class III malocclusion.



SOFT TRACTIONS SYSTEM MULTIFUNCTIONAL

Soft High tractions

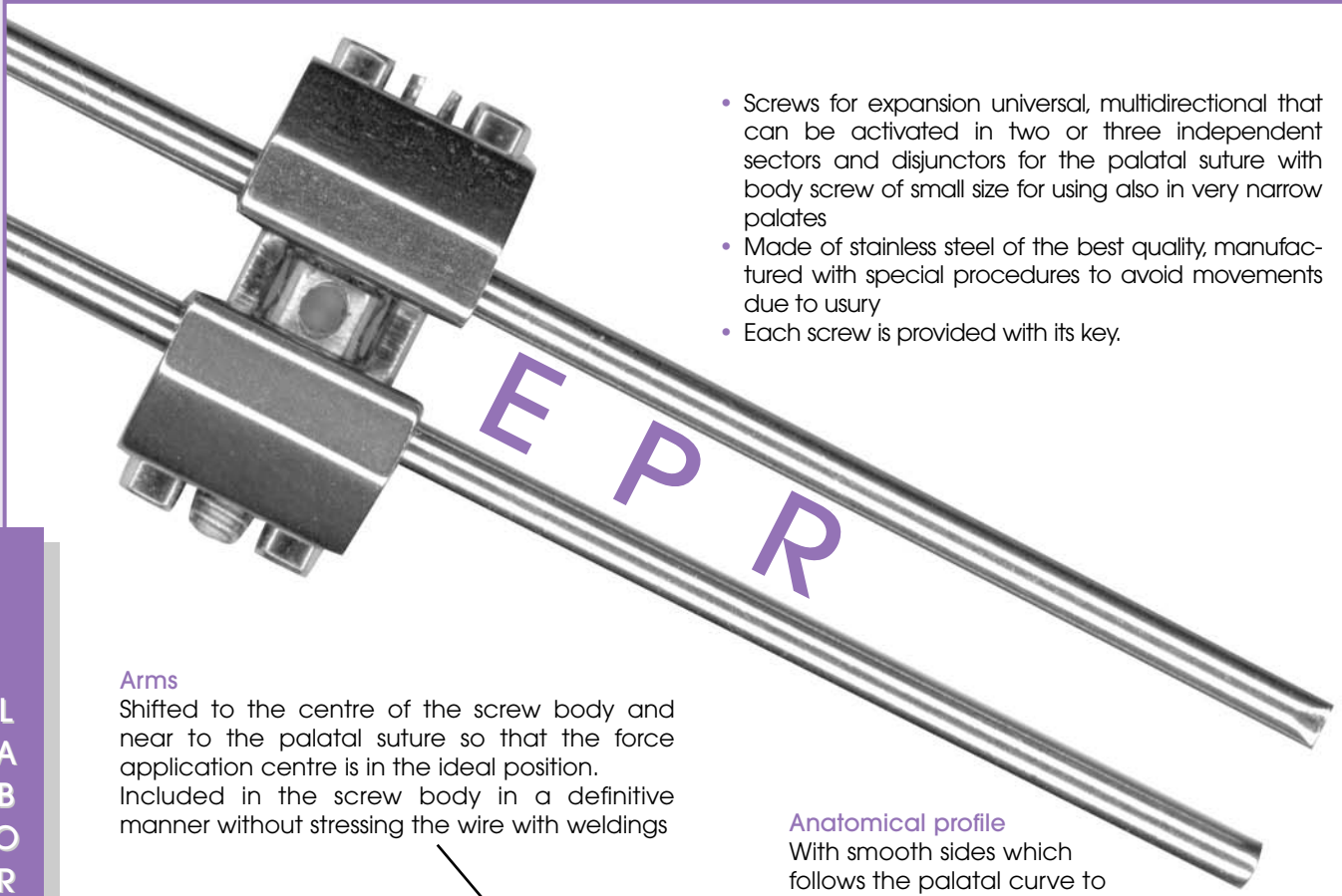
- Covered soft material in cloth for the comfort of the patient
- System with no-tear Velcro, which can be combined with the cap chin, "J" clasp and safety modules, both cervical and nape.



The accessories can be arranged in order to offer to the orthodontist a complete, simple to manage, effective, sure and comfortable for the patient system.

Ref.	Description	Q.ty
O103	Wrap cervical	5 pcs.
O105	High cap	5 pcs.
O107	Cap chin	5 pcs.
O101	Passing in velcro	10 pcs.
O12RD	Hook "J" Strongly	2 pcs.
O12SV	Hook "J" Light	2 pcs.

ORTHODONTIC EXPANSOR



- Screws for expansion universal, multidirectional that can be activated in two or three independent sectors and disjunctors for the palatal suture with body screw of small size for using also in very narrow palates
- Made of stainless steel of the best quality, manufactured with special procedures to avoid movements due to usury
- Each screw is provided with its key.

Arms

Shifted to the centre of the screw body and near to the palatal suture so that the force application centre is in the ideal position. Included in the screw body in a definitive manner without stressing the wire with weldings

Activation Screw

with double threads and tapping, studied to avoid every kind of undesired return after expansion

Anatomical profile

With smooth sides which follows the palatal curve to obtain a better engagement of the disjunctor

Screw Holes

More approachable by patient because they are placed downward, with respect of the palate, to make easier the engagement of the key.

Very strict screw body

Ideal for the using in small palates and studied so that, even when arrived to the limit, it offers an exceptional stability

Directional arrows

Engraved, that make easier the view of the screw rotational verse

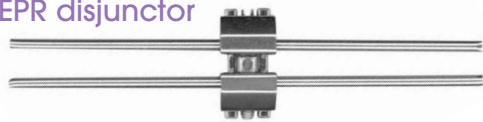




EPR Instrument

it makes easier the folding of the rapid disjunctor arm

ORTHODONTIC SCREWS & POSITIONATOR

IN THE TABLE HERE BELOW WE SHOW YOU THE ACCESSORIES, SIZES AND INFORMATION ON THE SCREWS ACTIVATION

Description	Dimension mm.	Expans. mm.	Compl. turn	Ref.	Q.ty
<p>EPR disjuncor</p>  <p>Screw for the rapid expansion of the palate</p>	7x12	10	0,9	V1100 V1101	1 pc. 10 pcs.
<p>EPR Small key</p>  <p>It makes easier the activation of the expanders</p>	90	-	-	V1011	1 pc.
<p>EPR instrument</p>  <p>it makes easier the activation of the folding of the EPR disjuncor arms</p>	122	-	-	V1200	1 pc.

Positioning devices

- Ideal material whether for the preparation of orthodontic positioning devices or for contention devices or for sporty mouth guarde
- It does not require particular equipments but it can be worked using one special muffle
- Available in three various consistencies, various tastes and colors
- Packaging of 10 pcs.



Ref.	Consistency	Color	Taste
861-150	Soft	Transparent	
861-250	Hard	Transparent	
861-240	Medium	Transparent	
861-240B	Medium	Transparent	Bubblegum
861-240M	Medium	Transparent	Mint

