

# BEAUTIFIL<sup>®</sup> II

*A Nano-Hybrid Composite  
with Fluoride Release & Recharge*

SHOFU

# Composite with Fluoride Release and Recharge

## S-PRG TECHNOLOGY

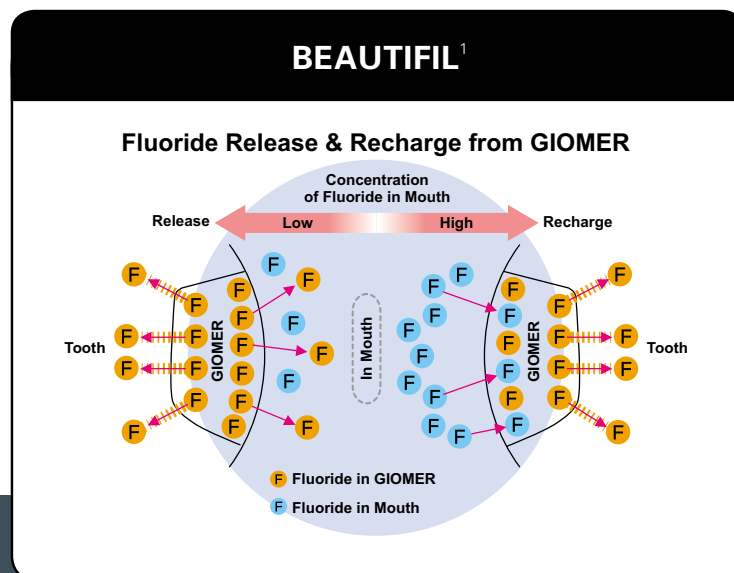
- Superior handling
- High level of radiopacity
- Desired properties of glass-ionomers
  - Fluoride release and recharge
  - Biocompatibility/re-mineralization
- Long term clinical stability
- Shade conformity (optical property). Aesthetics close to natural teeth
- Resistance to wear of posterior teeth
- Anti-plaque effect

## PHYSICAL PROPERTIES

- Flexural Strength: 130 Mpa
- Vickers Hardness: 62 Hv
- Wear Resistance: 0.52 wt%
- Filler Load: 83.3 wt%
- Depth of Cure: 5.9 mm
- Radiopacity: 3.4 Al : mm
- Fluoride Release & Recharge: Yes

**Beautiful II** is an universal nano-hybrid composite incorporating S-PRG (surface pre-reacted glass ionomer) technology that contains a stable phase of glass-ionomer for aesthetic and long-lasting restorations that release and recharge fluoride. **Beautiful II** responds to the concentration of fluoride in the mouth while maintaining the strength and stability of a composite resin. In a major published clinical study, there were no secondary caries after 8 years,<sup>1</sup> making it a great choice for pediatric care and high-caries risk patients.

In addition to the S-PRG fillers, discrete nano fillers (10~20nm) have been included in the filler structure to obtain a filler load of 83.3 wt% for fast and easy polishing with an outstanding surface luster which retains over time. In an 8 year clinical study 95% luster was retained.<sup>1</sup>



# BEAUTIFIL II

**SUPPORTED BY UNIVERSITY OF  
FLORIDA 8 YEAR CLINICAL STUDY**

## References

1. University of Florida study. Valeria V. Gordan, DDS, MS; Eduardo Mondragon; Ronald E. Watson, DDS, MAE; Cyndi Garvan, PhD; Ivar A. Mjör, BDS, MSD, MS, Dr.odont. JADA, Vol. 138, May 2007

# BEAUTIFIL II

BEAUTY STARTS HERE

## BEAUTIFIL II A Nano-Hybrid

**C**reate indistinguishable restorations with optical characteristics of natural teeth. The **Beautiful II** filler structure has been developed to simulate the internal structure of natural teeth with ideal light transmission and optical characteristics. The moderate translucency and light transmission of enamel combined with the light-diffusion of dentin offers predictable aesthetics with a close shade match to natural teeth.

**Beautiful II** has excellent versatility with natural shade reproduction that can be achieved with a chameleon effect, using a single shade that blends well with surrounding teeth making the restoration undetectable. In aesthetically demanding cases additional shades can be used to achieve exceptional results.

- *Sustained fluoride release and recharge*
- *Natural fluorescence*
- *High level of radiopacity*
- *Outstanding handling*
- *8 years of clinical success*

# giomer

Surface Pre-Reacted Glass (S-PRG) ionomer cements are used as fillers in GIOMER and are obtained by reacting acid-reactive fluoride-containing glass with polyacids in the presence of water.

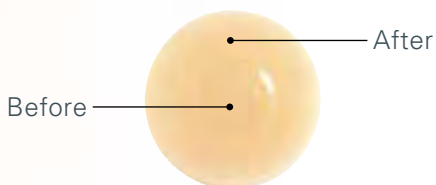
These S-PRG fillers release fluoride and recharge. The fluoride in GIOMER is responsible for:

- Reducing tooth mineral solubility;
- Encouraging remineralization of tooth enamel; and
- Decreasing the acid production of cariogenic bacteria.



# Composite

- Shade stability prior to and following curing



- Fluorescence close to natural teeth



- Exceptional radiopacity, 70% greater than enamel and 200% greater than dentin



- Low-shrinkage formula delivers excellent physical properties

- Easy sculpting without slumping or sticking with good thixotropic qualities
- Completely and accurately seals margins
- Supplied in pre-filled tips or syringes in a wide selection of shades. The "One Touch Cap" of the syringe enhances dispensing and delivery during build-up of restorations



- Ideal light transmission and optical characteristics impart excellent shade reproduction with a chameleon effect by simulating the internal structure of natural teeth
- High filler load and high flexural strength ensure long-term stability under rigorous intra-oral conditions for anterior and posterior restorations, direct laminate veneers and core build-ups
- Anti-plaque effect minimizes plaque adhesion, inhibits bacterial colonization and plaque accumulation
- Fast and easy polishing creates an outstanding surface luster that remains over time





## CASE STUDIES

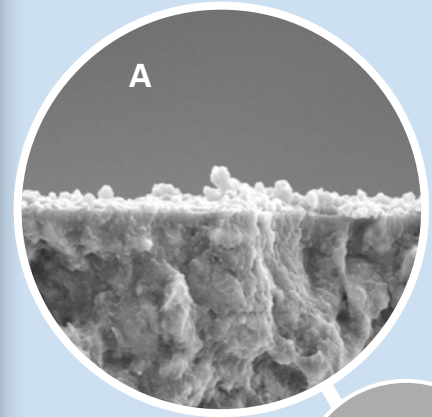


CLINICAL PHOTOGRAPHS COURTESY OF DR. SUSHIL KOIRALA

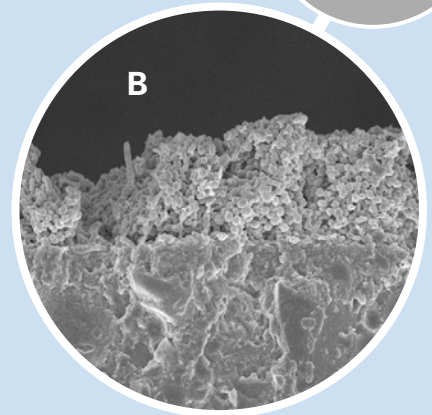
**Beautiful II** is perfect for direct restorations that require optimum aesthetics and biocompatibility

- Direct cosmetic tooth modifications
- Restoration of Class I – V cavities
- Restoration of cervical erosion and root caries
- Repair of fractured incisal edges
- Laminate veneers and core build-ups

## ANTI-PLAQUE EFFECT



Courtesy of  
Professor  
Koji Yamamoto  
of the  
ASAHI University



- A) Beautiful II with S-PRG filler.** Sporadic plaque formation.
- B) Conventional Composite Resin without S-PRG filler.** Proliferated plaque formation.

On the surface of a tooth restored using **Beautiful II** a “material film” layer is formed by saliva that is reported to minimize plaque adhesion and inhibit bacterial colonization.

Although this “material film” layer may be removed by brushing, subsequent layers are reproduced by saliva. Therefore S-PRG filler has a function of inhibiting plaque accumulation.

# BEAUTIFIL II

*A Nano-Hybrid Composite  
with Fluoride Release & Recharge*

## USA

Shofu Dental Corporation  
1225 Stone Drive  
San Marcos, CA 92078-  
4059, USA

## JAPAN

Shofu Inc.  
11 Kamitakamatsu-cho  
Fukuine, Higashiyama-ku  
Kyoto 605-0983, Japan

## SINGAPORE

Shofu In. Singapore Branch  
10 Science Park Road #03-12  
The Alpha, Science Park II  
Singapore 117684

## U.K.

SHOFU UK Riverside  
House,  
River Lawn Road,  
Tonbridge,  
Kent, TN9 1EP, UK

## CHINA

Shofu Dental Supplies  
(Shanghai) Co. Ltd.  
No.645 Jiye Road  
Seshan Industry Park  
Songjiang 201602,  
Shanghai, China

## GERMANY

EU Representative:  
Shofu Dental GmbH  
Am Brüll 17  
40878 Ratingen, Germany

VISIT [WWW.SHOFU.COM](http://WWW.SHOFU.COM)

SHOFU

OR CALL 800.827.4638



### Beautiful II 6 Color Set (Item No. 1775)

(6) 4.5g syringes in A2, A3, A3.5, B2, A30, INC; Dura-White Stone, Super-Snap Singles, OneGloss Trial Set, paper pad

### Beautiful II Tips 6 Color Set (Item No. 1776)

6 tip colors (0.25g x 120 tips) in A2, A3, A3.5, B2, A30, INC; Dura-White Stone, Super-Snap Singles, OneGloss Trial Set, paper pad

### Beautiful II Cosmetic Set (Item No. 1777)

(3) 4.5g syringes in A2, A3, INC; 2g Beautiful Opaquer-LO, 2g Beautiful Flow F02-A2, Dura-White Stone, Super-Snap Singles, OneGloss Trial Set, paper pad

### Beautiful II Tips 3 Color Set (Item No. 1778)

3 tip colors (0.25g x 30 tips) in A2, A3, B2, OneGloss Trial Set

### Beautiful II Syringe Refill 4.5g

Shade	Item No.
A1	1401
A2	1402
A3	1403
A3.5	1404
A4	1405
B1	1408
B2	1409
B3	1410
C2	1412
C3	1413
A20	1419
A30	1420
Incisal	1415
Bleach White	1416

### Beautiful II Tips Refill 0.25g x 20 tips

Shade	Item No.
A1	1752
A2	1753
A3	1754
A3.5	1755
A4	1756
B1	1759
B2	1760
C2	1763
A20	1770
A30	1771
Incisal	1766
Bleach White	1767

### Beautiful Opaquers 2g

Beautiful Opaquer UO (Item No. 1363) Beautiful Opaquer LO (Item No. 1364)

### Beautiful® Flow Plus F00 (Zero Flow) 2.2g

Shade	Item No.
A0.5	2000
A1	2001
A2	2002
A3	2003
A3.5	2004
A4	2005
A0.50	2006
A10	2007
A20	2008
Incisal	2010
Bleach White	2011

### Beautiful® Flow Plus F03 (Low Flow) 2.2g

Shade	Item No.
A0.5	2013
A1	2014
A2	2015
A3	2016
A3.5	2017
A4	2018
A20	2020
A30	2021
Incisal	2023
Bleach White	2024
Milky White	2026
Cervical	2027

### FINISHING AND POLISHING

#### Super-Snap® Rainbow Kit (Item No. 0500)

100 standard disks, 80 mini disks, 40 polystrips, 2 Dura-White Stones (shapes CN1 and FL2), CompoSite Fine Midi-Point, 4 CA metal mandrels arranged in a semicircular rainbow organizer tray

#### OneGloss® Set (Item No. 0180)

25 Cups, 25 Midi-Point, 25 IC shapes, 3 CA mandrels

#### OneGloss® PS Assortment Kit (Item No. 0175)

15 Cups, 15 IC, 20 Midi-Points

#### Robot® Carbide CTF-FG Finishers 3 pack

Shape	Item No.	Shape	Item No.
SH 132	0761-3	SH 134	0767-3
SH 132 F	0762-3	SH 134 F	0768-3
SH 132 UF	0763-3	SH 134 UF	0769-3
SH 133	0764-3	SH 135	0770-3
SH 133 F	0765-3	SH 135 F	0771-3
SH 133 UF	0766-3	SH 135 UF	0772-3

