

CERAMAGE[®]

LIGHT-CURING MICRO-HYBRID COMPOSITE



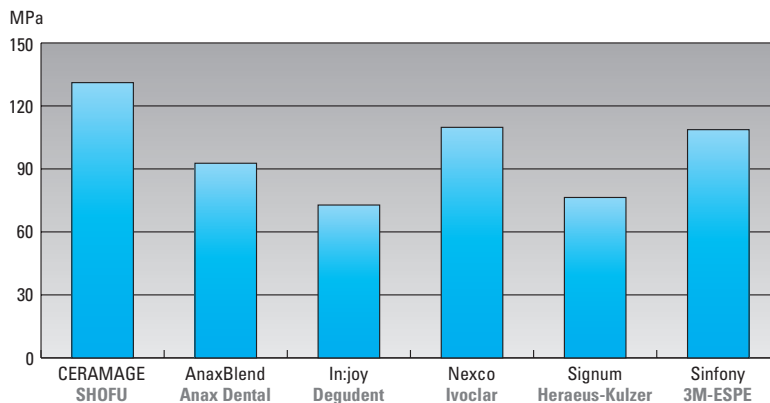
Natural aesthetics with well-balanced material properties

Light-curing, micro-filled veneering composites have proved highly successful in clinical practice and are used for a wide variety of applications, thanks to extraordinary material properties and convenient handling.

The appeal of CERAMAGE lies in its optimised balance between excellent material characteristics and superior aesthetics. The special composition of this micro-hybrid composite system, with a ceramic filler content of more than 70 %, allows you to fabricate all types of aesthetic indirect anterior and posterior restorations using any framework design.

Unlike ceramics, CERAMAGE absorbs stress, which has a positive effect on the chewing behaviour of patients with implant-supported restorations. Its outstanding flexural strength is achieved exclusively by light-curing. Complicated and time-consuming heat-tempering treatments are not necessary.

Flexural strength after 24-hour storage in distilled water at 37 °C



Source:
Department of Dental
Prosthetics and
Materials Science,
University of Jena, Germany,
Dr. A. Rzanny, 2013

More balanced – more options

- Newly designed “Universal Opaque” with excellent masking properties and bond strengths on all dental alloys
- Natural aesthetics thanks to tooth-like light transmission
- Abrasion-resistant occlusal veneering
- Wide variety of translucent effect colours and fluorescent paste stains (LITE ART)
- Convenient viscosity and sculptability
- High colour stability
- Very good polishability and resistance to plaque formation

Unrestricted indications in anterior and posterior teeth

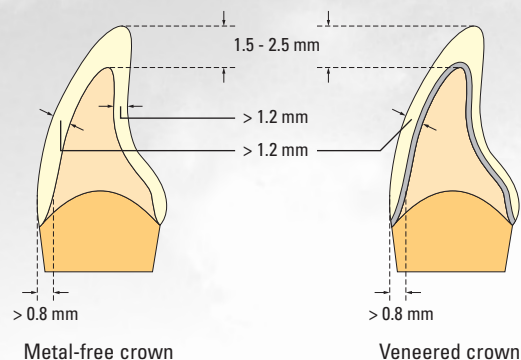
The ideal material for any indication

CERAMAGE combines natural colour reproduction with extraordinary strength and elasticity and is recommended for both standard and highly stressed (e.g. implant-supported) restorations.

- Fully veneered crowns and bridges
- Fully veneered telescopic and implant-supported restorations
- Precision attachment work
- Occlusal veneering
- Inlays/Onlays
- Veneers
- Long-term temporaries
- Modifications to conventional resin teeth

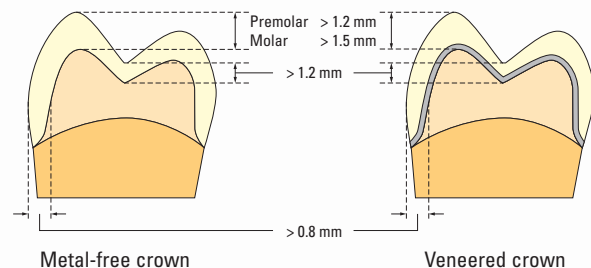
Anterior restorations

For both metal-free and metal-reinforced anterior restorations, recommended preparation margins are a rounded shoulder on the labial aspect and a distinct chamfer on the lingual aspect. Total wall thicknesses should be no less than 1.2 mm.



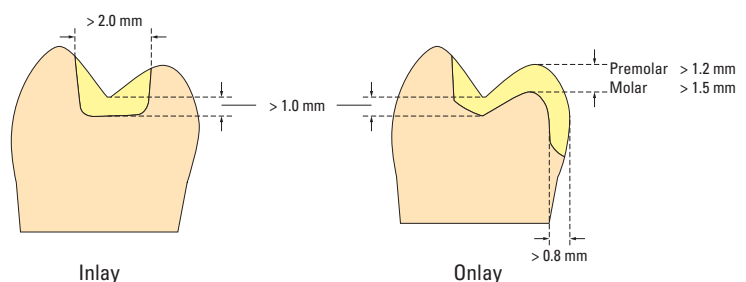
Posterior restorations

In posterior restorations, a clearly defined shoulder preparation with a rounded chamfer is a particularly important prerequisite for adequate stress bearing capacity. Walls of metal frameworks should be no thinner than 0.3 mm.



Inlays / Onlays

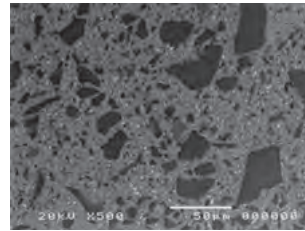
For metal-free inlays or onlays, a box preparation with margins located outside the antagonistic contacts is recommended.



Convincingly different

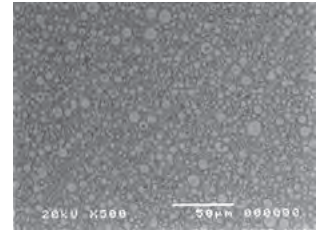
CERAMAGE offers more than conventional veneering composite systems. Thanks to the homogeneous structure of its inorganic and organic micro-fillers (< 1 µm), CERAMAGE features ceramic-like properties, well-balanced hardness and strength, and a reliable bond to the framework.

Conventional composites



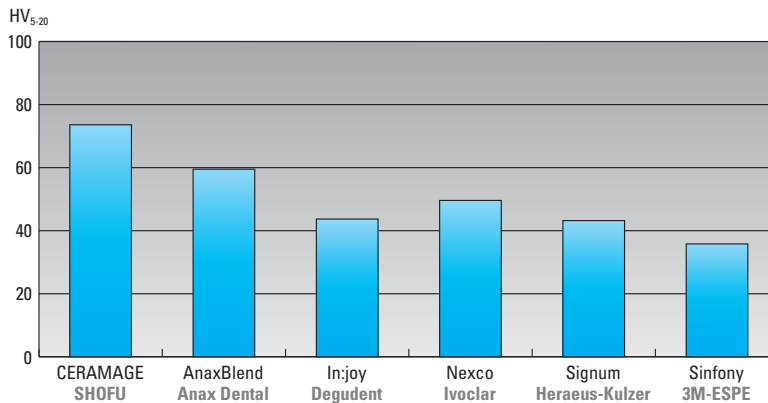
In conventional composites, the glass filler is unevenly distributed in the resin matrix

CERAMAGE



CERAMAGE features ceramic-like properties, thanks to its homogeneous microstructure

Vickers hardness after 24-hour storage in distilled water at 37 °C



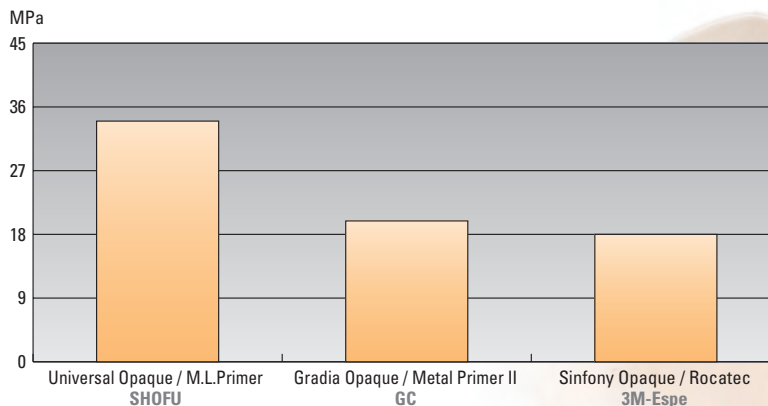
Source:
Department of Dental
Prosthetics and
Materials Science,
University of Jena, Germany,
Dr. A. Rzanny, 2013

Universal Opaque - reliable bond to any dental alloy

The new Universal Opaque system forms a symbiotic network with the bonding agent, M. L. Primer, providing a durable and reliable bond.

Especially when using precious alloys, this network is extremely resistant to hydrolysis and thermal loading.

Compressive shear bond strength to a semi-precious alloy (AuroLloyd KF) after 25,000 thermocycles

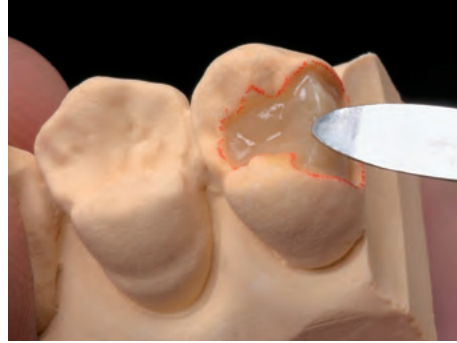


Source:
Department of Dental
Prosthetics and
Materials Science,
University of Jena, Germany,
Dr. A. Rzanny, 2013

Excellent handling and wide variety of effects

Inlays / Onlays

The special structure and extraordinary composition of CERAMAGE ensure controlled application and sculpting, even of small anatomical details. This makes the fabrication of metal-free inlays and onlays easy and quick.



Before



After

Telescopic and implant-supported restorations

Thanks to the natural shade match of the CERAMAGE dentine and opalescent incisal shades, even a basic layering technique allows you to fabricate removable and fixed restorations with a very harmonious appearance.

There is no limit to creativity and experience when using the versatile translucent and effect colours available in various pasty consistencies.

In prosthetic work, the combination of CERAMAGE and CERAMAGE Flow helps you to come closer to the natural original than ever.



Implant restoration

Making red & white aesthetics ...

The natural appearance of combined telescopic and implant-supported restorations is decisively influenced by the harmonious design and shading of red and white aesthetics.

The supplementary CERAMAGE GUM materials have the same basis as the tooth-coloured components of the well-proven CERAMAGE micro-ceramic hybrid composite system.

They imitate natural gingiva colours and effects and offer unlimited options for the restoration of reduced or missing parts of the gingiva.




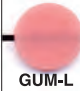








Indications

- Removable telescopic / implant restorations
- Metal-reinforced and metal-free CAD/CAM restorations
- Permanent composite-veneered restorations
- Long-term temporaries
- Removable partial dentures

More space for creativity

Seven shades are available for creating natural red aesthetics. Based on the Paste Opaques, which can be applied pure or mixed, there are no limits to your creativity with these materials. From bluish violet to light pink, you can achieve perfect red and white aesthetics.

OPAQUE	 GUM-O	 WO		
TRANSLUCENT	 GUM-T			
CONCENTRATE	 GUM-L	 GUM-D	 GUM-Or	
FLOWABLE CR	 F-GUM-Br	 F-GUM-V	 F-GUM-R	 F-W

... more natural

The proper base colour right from the start

The CERAMAGE GUM COLOR system includes not only various colours available in two different viscosities, but also two ready-to-use Paste Opaques (White and Pink).

By selectively mixing these Paste Opaques, you can create a wide variety of intermediate shades as base colours for framework masking and subsequent layering.



Individual accents with GUM-Flow

GUM-Flow allows you to easily achieve fine, individual colour nuances and accents. These pastes are more flowable than the standard CERAMAGE composites and can also be mixed, just like the Paste Opaques. Using GUM-Flow, you can create excellent interdental or raised alveolar areas.



Natural aesthetics without any compromise



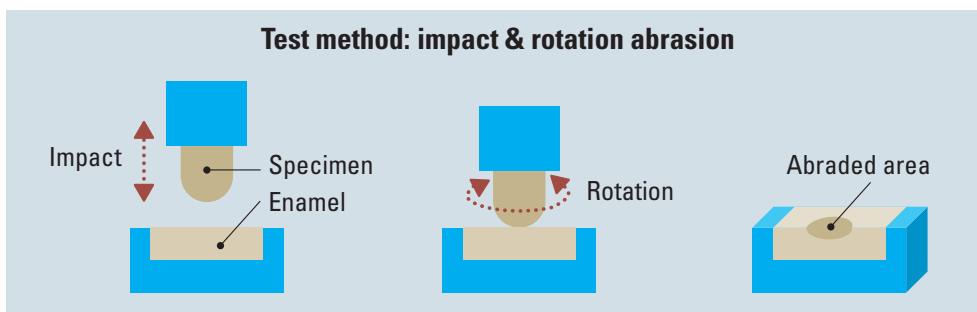
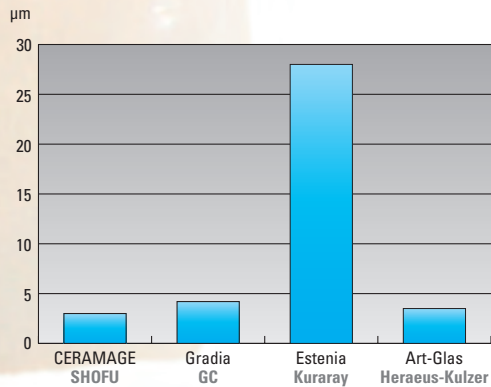
Abrasion-resistant and gentle on the teeth

The material structure and the resulting homogeneous surfaces of the CERAMAGE composites are extremely antagonist-friendly, for better resistance to loss of lustre, discolouration and plaque formation.

These abrasion properties ensure a very high patient comfort of restorations and dentures.

A direct comparison after 10,000 abrasion cycles shows that CERAMAGE causes only minimal enamel reduction.

Abrasion of opposing enamel after 10,000 cycles



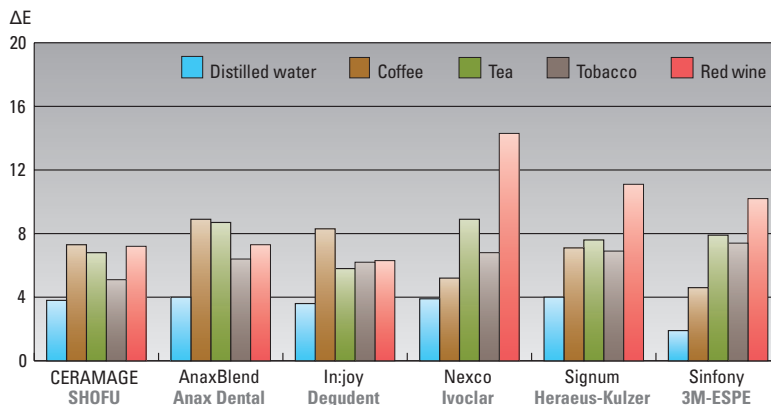
Source: Research and Development, Shofu Inc., Japan 2008

Durable natural appearance

Colour stability

Examination after 28-day storage in various media and subsequent cleaning with a hand toothbrush and blend-a-med toothpaste for 2 minutes

($\Delta E < 3$ is visually imperceptible)



Source: Department of Dental Prosthetics and Materials Science, University of Jena, Germany, Dr. A. Rzanny, 2013

The easy way to high surface gloss and durability

CERAMAGE features very good polishability, ensuring homogeneous surfaces and, as a result, outstanding resistance to plaque formation. Its exceptional structure and its ceramic microfiller content of 73 % make the surfaces highly durable.

CERAMAGE FINISHING & POLISHING KIT

The well-matched rotary instruments of this finishing and polishing kit, developed specifically for CERAMAGE, allow you to create high-quality surfaces in a very short time. Thanks to the long service life of the diamond-impregnated CompoMaster Coarse and CompoMaster polishers, even hard-to-reach occlusal or interproximal surfaces do not pose any problems.

PN 0333



DURA-POLISH

DURA-POLISH alumina polishing paste allows you to quickly and easily smooth all surfaces of your CERAMAGE restoration. The homogeneous surface created is ideal for easy high-lustre polishing.

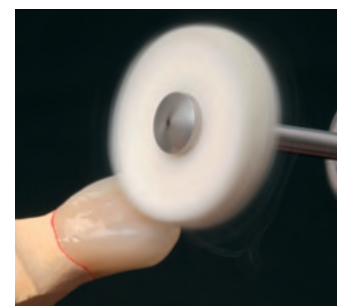
PN 0552



DURA-POLISH DIA

This diamond polishing paste features a very high content of filler particles whose structure and distribution are matched to the inorganic filler of the CERAMAGE composites. After pre-polishing with DURA-POLISH, all anatomical details can be quickly polished to a high lustre using DURA-POLISH DIA and a felt wheel.

PN 0554



We would like to thank Mrs. Carla Gruber, PSK®, Unterschleissheim, Mr. German Bär, MDT, St. Augustin, and Mr. Uwe Gehringer, DT, Munich, Germany, for their friendly support and for providing their photographs.

Set components

CERAMAGE AB SET

The comprehensive CERAMAGE AB Set is the basis of this composite line; its logically matched components allow you to achieve a lifelike reproduction of the A and B shades of the VITA* Classical shade system.

PN 1801



CERAMAGE CD SET

This practical supplementary set completes the CERAMAGE system. It is based on the contents of the CERAMAGE AB Set and helps you to reproduce all VITA* Classical C and D shades.

PN 1802



CERAMAGE 8 COLOR SET

This set contains all the components needed to fabricate aesthetic restorations in the shades A1 to A4, as well as B2, B3 and C3, in a practical rack.

PN 1806



CERAMAGE INTRO SETS

The efficient starter sets for the CERAMAGE technique.

Shade: A2

PN 1807

Shade: A3

PN 1808



CERAMAGE GUM COLOR FULL SET

The highly versatile components of this set offer you unrestricted options for the reconstruction of gingival structures when producing high-quality telescopic and implant-supported restorations.

PN 1804



* VITA is a registered trademark of VITA Zahnfabrik, Bad Säckingen, Germany



SHOFU INC. 11 Kamitakamatsu-cho, Fukuine, Higashiyama-ku, Kyoto 605-0983, Japan (www.shofu.co.jp)
SHOFU DENTAL ASIA-PACIFIC PTE. LTD. 10 Science Park Road, #03-12 The Alpha, Science Park II, Singapore 117684 (www.shofu.com.sg)
SHOFU DENTAL TRADING (SHANGHAI) CO., LTD. No. 645 Jiye Road, Sheshan Industrial Park, Songjiang, Shanghai 201602, China (www.shofu.com.cn)
SHOFU DENTAL CORPORATION 1225 Stone Drive, San Marcos, CA 92078-4059, USA (www.shofu.com)
SHOFU UK Riverside House, River Lawn Road, Tonbridge, Kent, TN9 1EP, UK (www.shofu.co.uk)
SHOFU DENTAL GmbH   Am Brüll 17, 40878 Ratingen, Germany (www.shofu.de)

SHOFU is a registered trademark of SHOFU INC. All other trademarks and registered trademarks are the property of their respective holders. SHOFU INC. reserves the right to change specifications without notice.