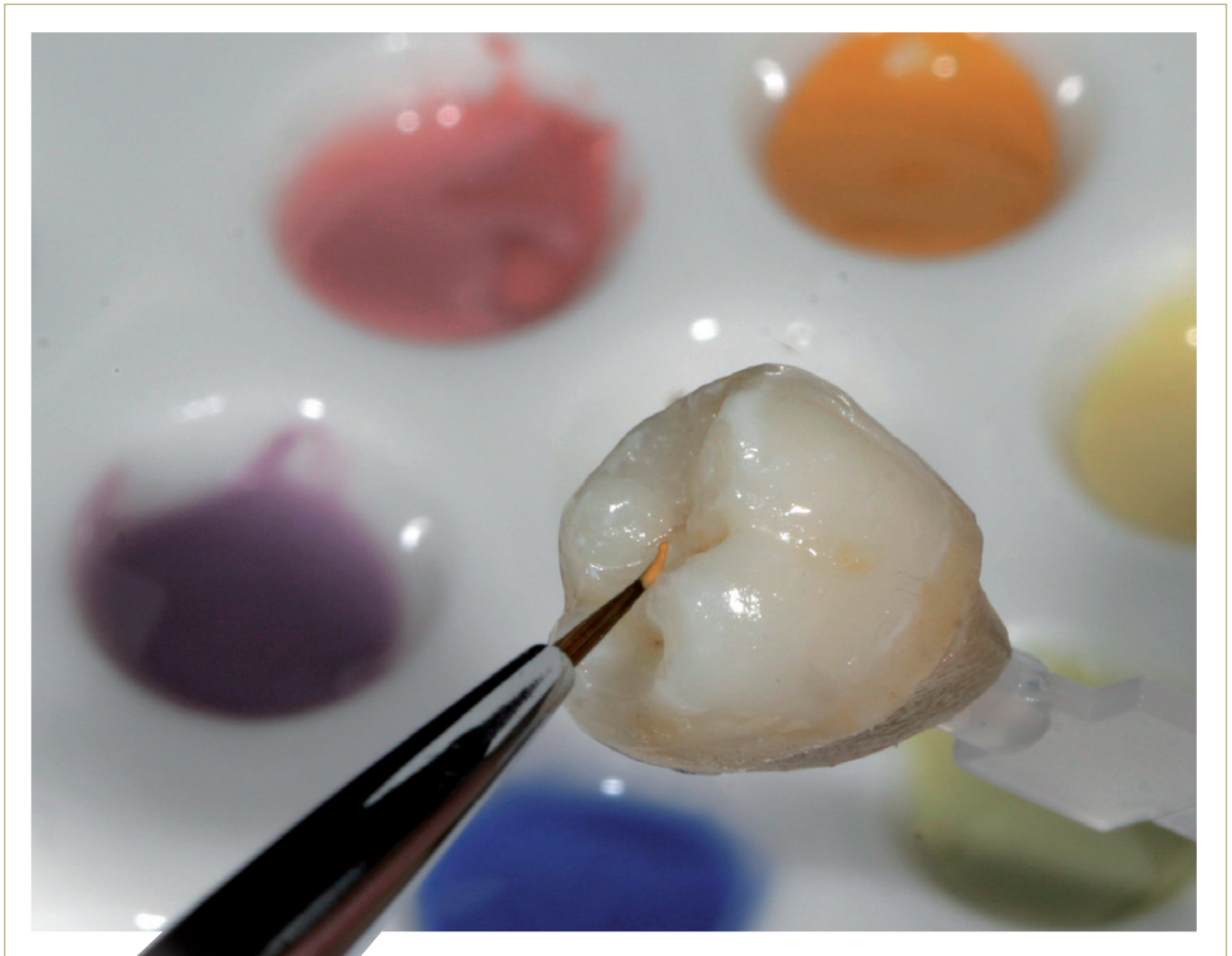




FLUORESCENT PORCELAIN STAINS



VINTAGE ART

VINTAGE Art porcelain paste stains are matched to the color effects of natural teeth.

The color dimensions of natural teeth and the reproduction techniques of experienced dental technicians have been analyzed worldwide.

Based on this analysis, a color design concept has been created under the direction of Makoto Yamamoto, which opens up an unlimited variety of possibilities for internal and external characterisation and allows for the adaptation of basic colors in porcelain restorations.

The fluorescent VINTAGE Art porcelain stains can be applied to all high-fusing porcelain materials within a CTE-range of $6.0-16.0 \times 10^{-6}K^{-1}$, regardless of it being metal-reinforced or metal-free.

Immediately ready for use

The ready-to-use VINTAGE Art paste stains impress with their micro-fine particle structure and optimum consistency. Separate mixing is not required. In addition to this, they exhibit excellent application properties and achieve outstanding coverage.

Indications

- **Pressed all-ceramics**
Veneers, inlays / onlays, crowns / bridges
- **CAD / CAM all-ceramics**
Feldspar blanks, aluminium-oxide and zirconium-oxide blanks
- **Metal-free and PFM restorations**
Within a CTE-range of $6.0-16.0 \times 10^{-6}K^{-1}$



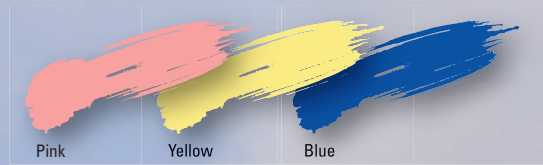
Unlimited variety of applications

- Highly fluorescent Glazing Paste as well as porcelain stains for internal and external staining
- Excellent application properties and outstanding covering ability due to ultra-fine particle structure
- Targeted creation of striking and fine color accents in laboratory and surgery
- Color priming of all-ceramic frameworks or opaquer with fluorescent Foundation Shade Stains
- Simple shade-staining technique for pressed or CAD/CAM porcelain restorations in the color groups A, B, C, D and R (Red Shift)
- Logically structured color concept
 - Base Color Stains / Color Stains
 - Foundation Shade Stains
 - Shade Stains
- Firing temperature range from 830 °C (*internal staining*) to 880 °C (*external staining*)

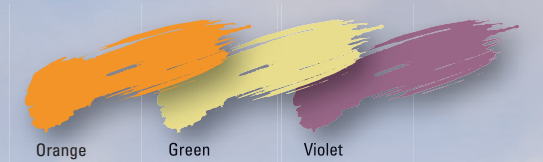
Base Color Stains

The Base Color concept of the VINTAGE Art porcelain stains includes the classic primary colors such as pink, yellow or blue as well the secondary colors orange, green and violet. Even these basic colors offer a wide range of applications for natural staining or the required correction of porcelain restorations.

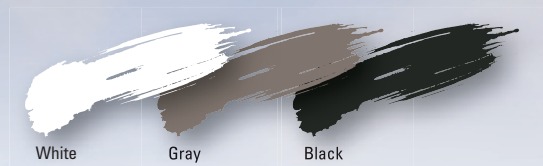
By adding a relative amount of the achromatic colors white, gray and black, you are able to specifically increase or reduce the brightness level of the colors.



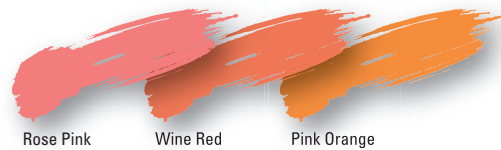
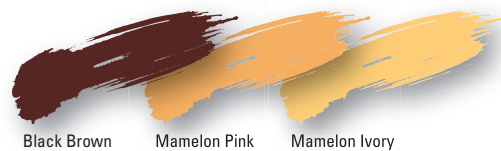
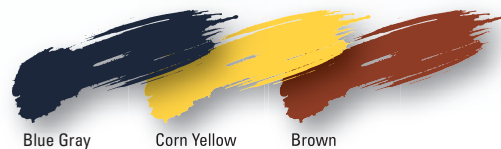
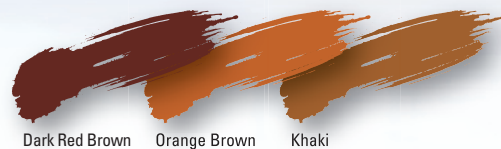
Primary colors



Secondary colors



Achromatic colors



Color Stains

For mixing individual color shades, the Color Stains are at your disposal. With these color shades, you are able to successfully reproduce any natural characteristics of teeth and perfectly adapt them to the adjacent natural teeth.

Fine accents for flawless copies



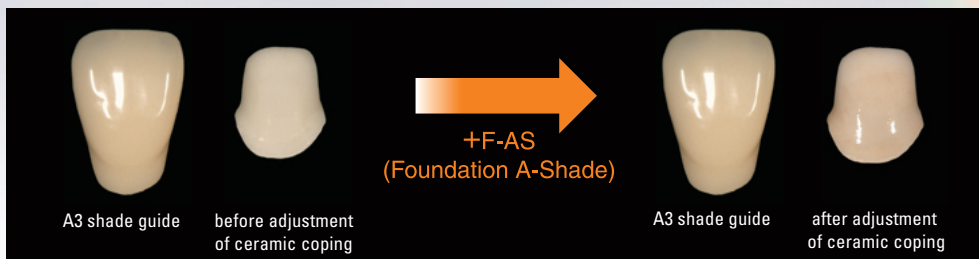
Image: B. Egger



Image: K. Ohata

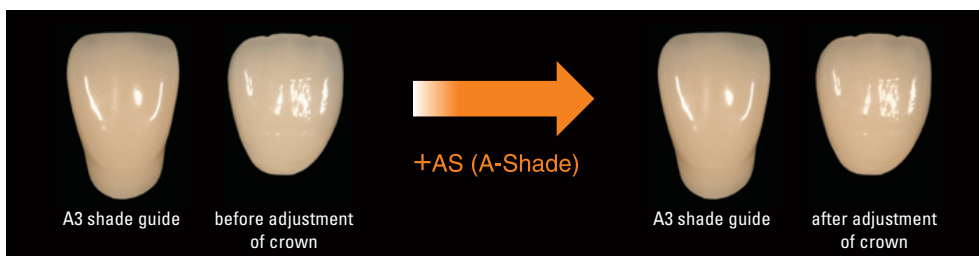
Foundation Shade Stains

These basic stains open up unique possibilities to achieve distinct three-dimensional appearance of all ceramic or metal-reinforced porcelain restorations. By directly applying a thin layer of the fluorescent porcelain stain, the framework is imparted the desired basic shade of the respective tooth color group.



Shade Stains

Staining of finished milled or pressed ceramic crowns and bridges according to the desired color group can be accurately obtained by surface staining with Shade Stains. These porcelain stains are slightly brighter than the Foundation Shade Stains and therefore perfectly suited for surface staining.



MDT Bernhard Egger, Füssen, Germany and MDT Kazunari Ohata, Tokyo, Japan have fabricated the depicted restorations.

Order information

Basic Color Set



17 colors, 3 g each
PN 6510

Color			Use example				
PN	Indication	Code	Shade adjustment	Cervical	Stain	Incisal	Gum
6514	Glazing Paste	GP					
6515	Pink	P	●	●			●
6516	Yellow	Y	●				
6517	Blue	Bl	●			●	
6518	Orange	O	●	●	●		
6519	Violet	V	●			●	●
6520	Green	Gr	●				
6521	Black	B	●		●		
6522	White	W			●	●	
6523	Dark Red Brown	DR-Br		●	●		
6524	Orange Brown	O-Br		●	●	●	
6525	Khaki	K		●	●		
6526	A-Shade	AS	●	●			
6527	B-Shade	BS	●	●			
6528	C-Shade	CS	●	●			
6529	D-Shade	DS	●	●			
6530	R-Shade	RS	●	●			

Effect Color Set



16 colors, 3 g each
PN 6511

Color			Use example				
PN	Indication	Code	Shade adjustment	Cervical	Stain	Incisal	Gum
6514	Glazing Paste	GP					
6531	Gray	G	●			●	
6532	Blue Gray	Bl-G				●	
6533	Corn Yellow	CY				●	
6534	Brown	Br		●	●		
6535	Black Brown	B-Br		●	●		
6536	Mamelon Pink	MP				●	
6537	Mamelon Ivory	Mlv				●	
6538	Rose Pink	RP		●			●
6539	Wine Red	WR		●			●
6540	Pink Orange	P-O		●			●
6541	Foundation A-Shade	F-AS	●				
6542	Foundation B-Shade	F-BS	●				
6543	Foundation C-Shade	F-CS	●				
6544	Foundation D-Shade	F-DS	●				
6545	Foundation R-Shade	F-RS	●				

Base Color Stain
 Color Stain
 Shade Stain



SHOFU INC. 11 Kamitakamatsu-cho, Fukuine, Higashiyama-ku, Kyoto 605-0983, Japan (www.shofu.co.jp)
SHOFU INC. Singapore Branch 10 Science Park Road, #03-12 The Alpha, Science Park II, Singapore 117684 (www.shofu.com.sg)
SHOFU DENTAL TRADING (SHANGHAI) CO., LTD. No. 645 Jiye Road, Sheshan Industrial Park, Songjiang, Shanghai 201602, China (www.shofu.com.cn)
SHOFU DENTAL CORPORATION 1225 Stone Drive, San Marcos, CA 92078-4059, USA (www.shofu.com)
SHOFU UK Riverside House, River Lawn Road, Tonbridge, Kent, TN9 1EP, UK (www.shofu.co.uk)
SHOFU DENTAL GmbH  Am Brüll 17, 40878 Ratingen, Germany (www.shofu.de)

SHOFU is a registered trademark of SHOFU INC. All other trademarks and registered trademarks are the property of their respective holders. SHOFU INC. reserves the right to change specifications without notice.
© Copyright 2001 SHOFU INC. All rights reserved.